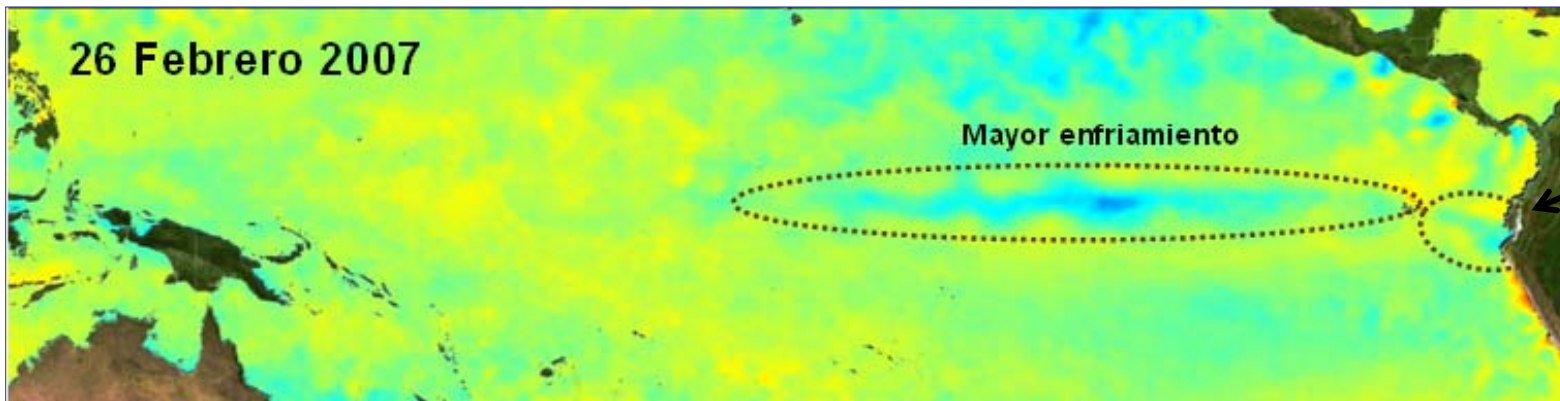
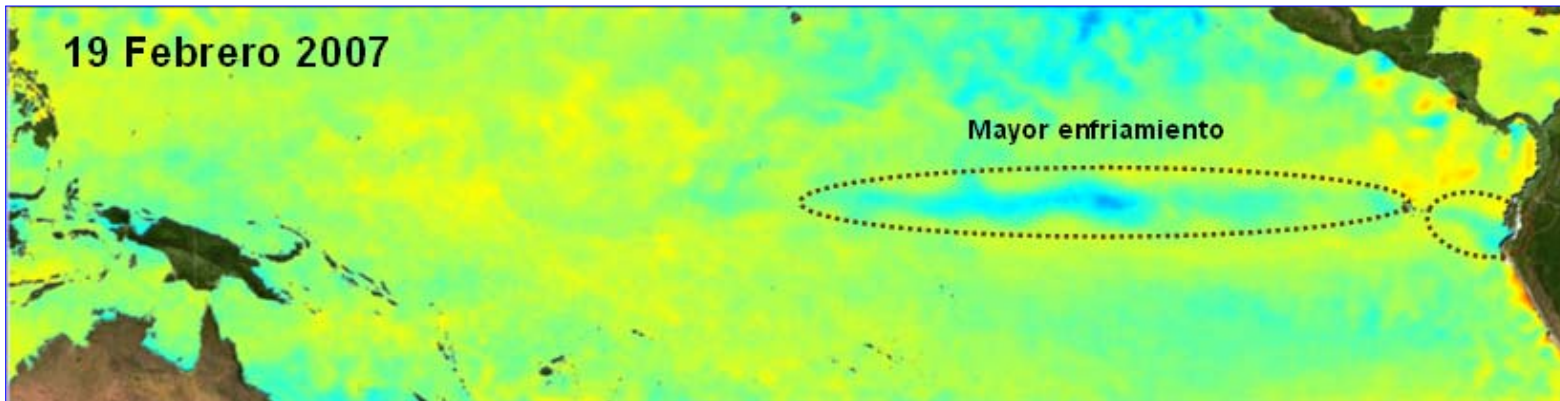
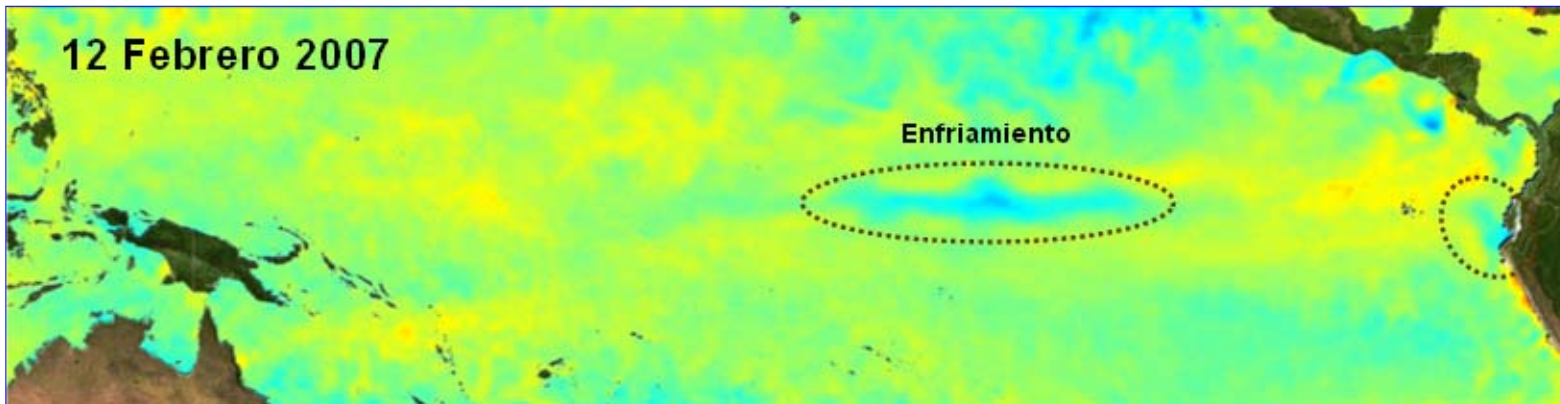
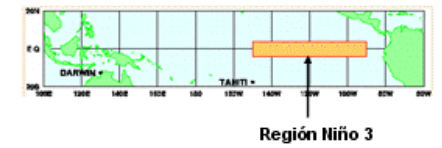


Anomalía de Temperatura Superficial del Mar (°C)

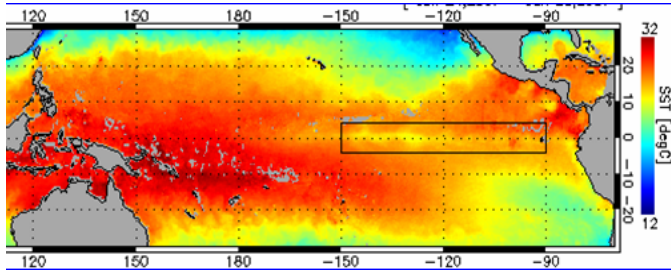


“Enfriamiento en la Región Niño 3, Niño 1+2 y la Costa Norte del Perú” :

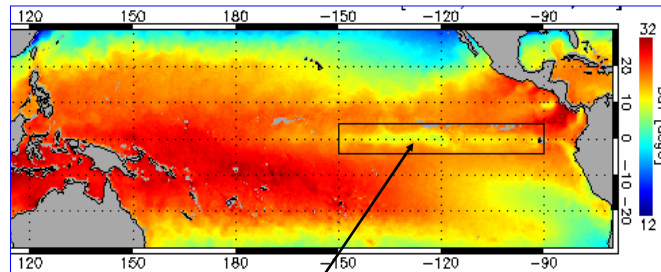
28 ene vs 15 feb vs 27 feb 2007



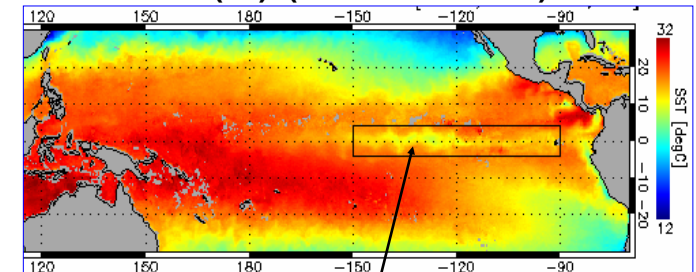
TSM (°C) (24 – 28 ene 2007)



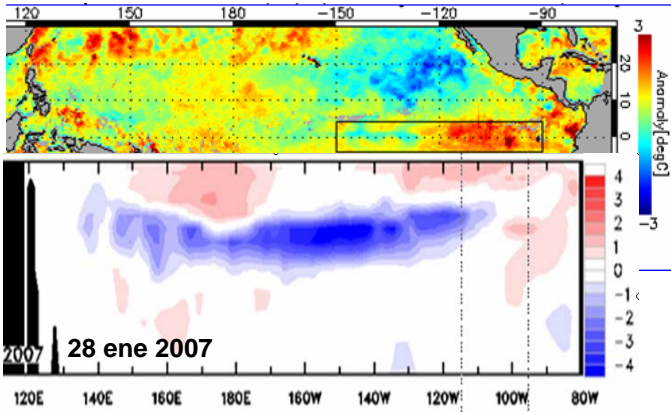
TSM (°C) (11 – 15 feb 2007)



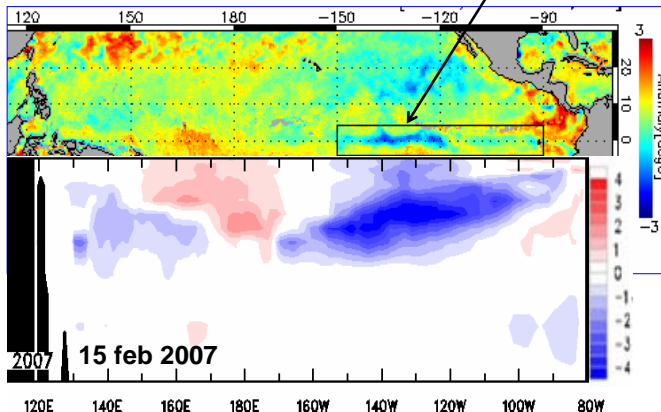
TSM (°C) (23 – 27 feb 2007)



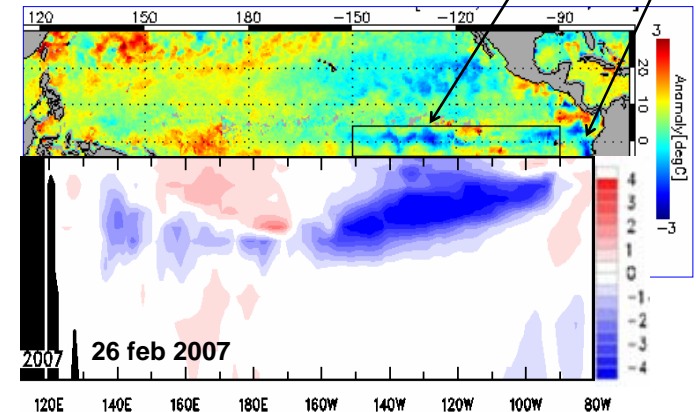
Anomalia TSM (°C) (24 – 28 ene 2007)



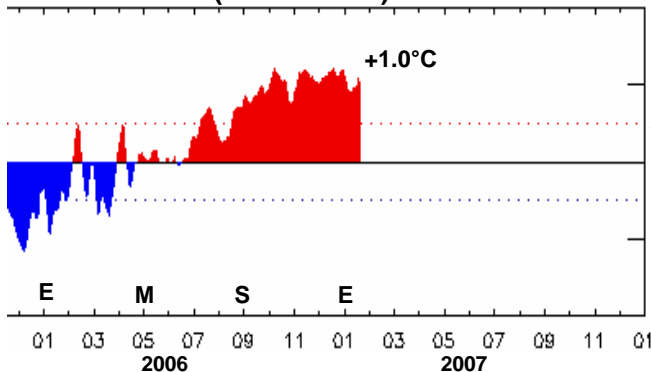
Afloramiento -2°C



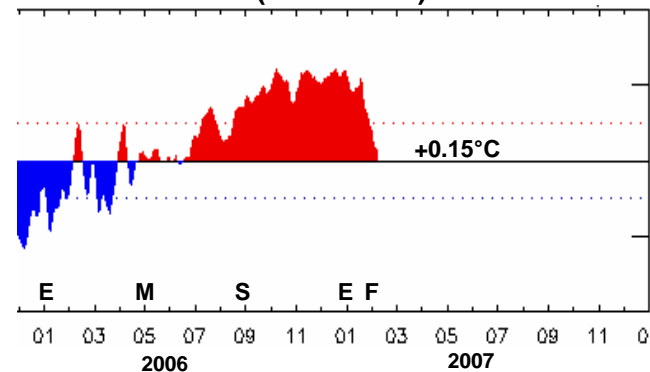
Afloramiento -2°C



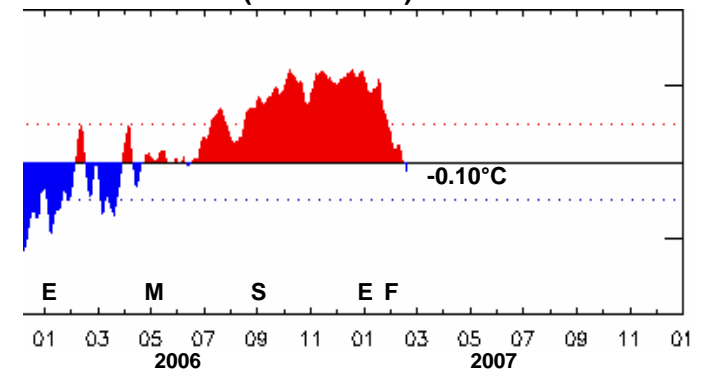
Serie de Tiempo de Anomalia TSM (°C) (28 ene 2007)



Serie de Tiempo de Anomalia TSM (°C) (15 feb 2007)

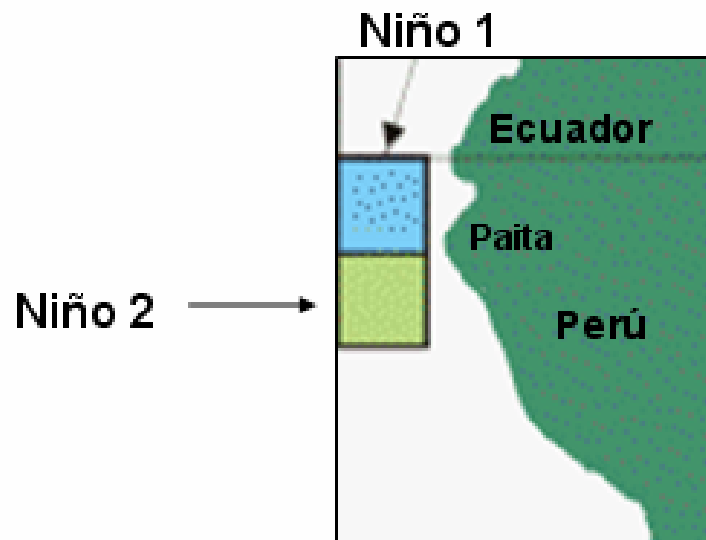
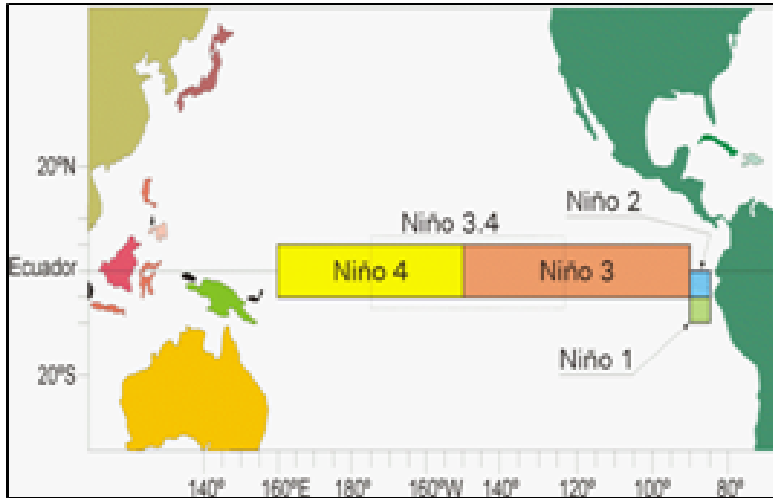


Serie de Tiempo de Anomalia TSM (°C) (27 feb 2007)

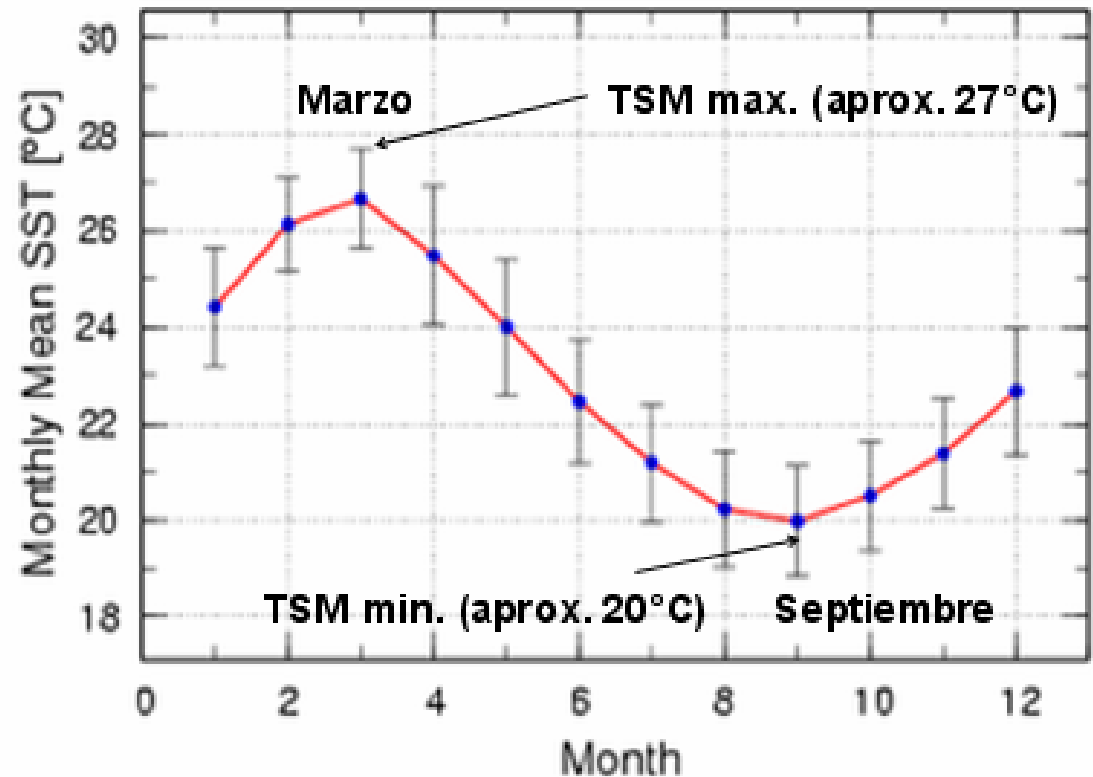


“Enfriamiento en la Región Niño 1+2”

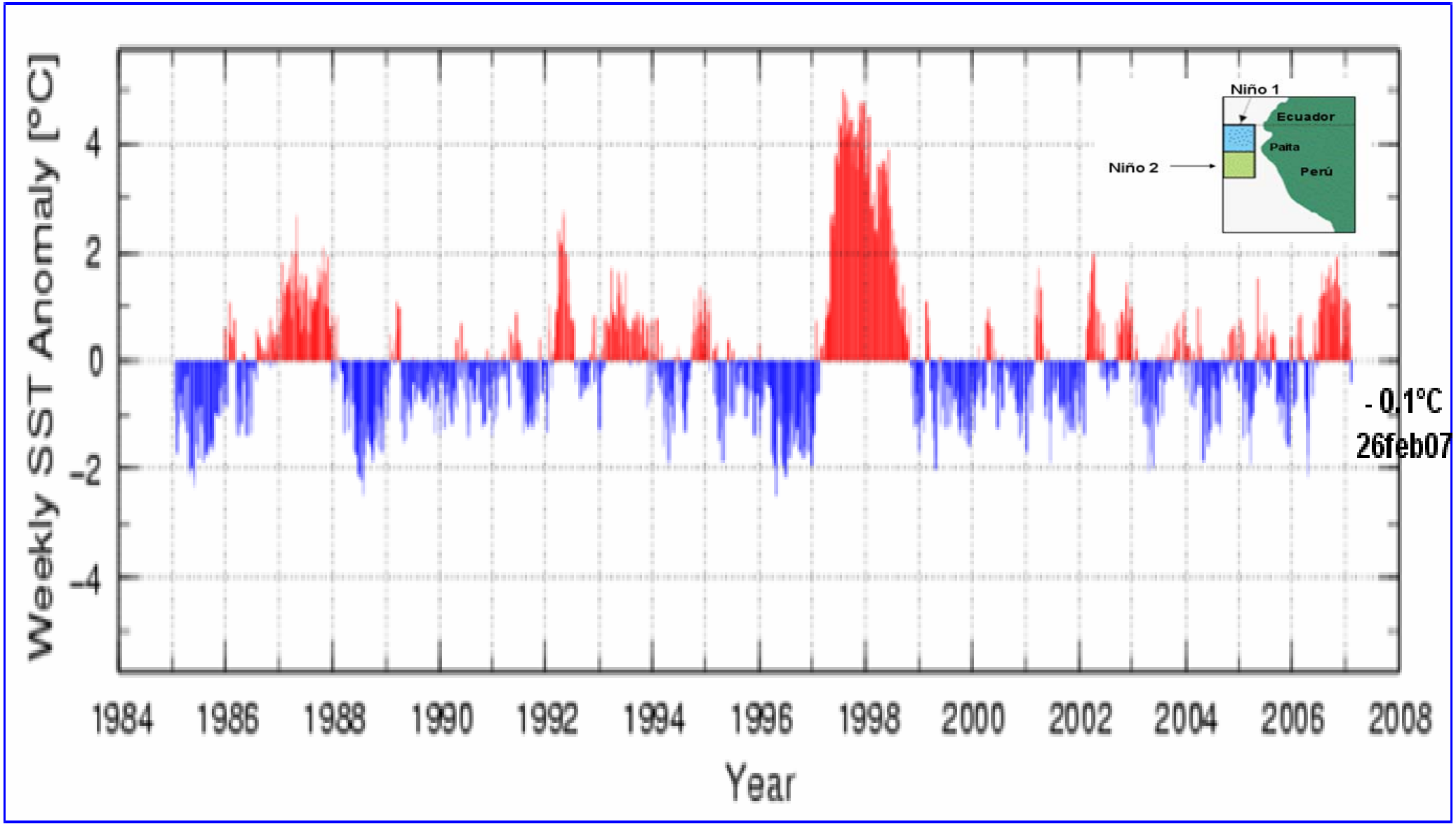
(Actualizado al 26 Feb 2007)



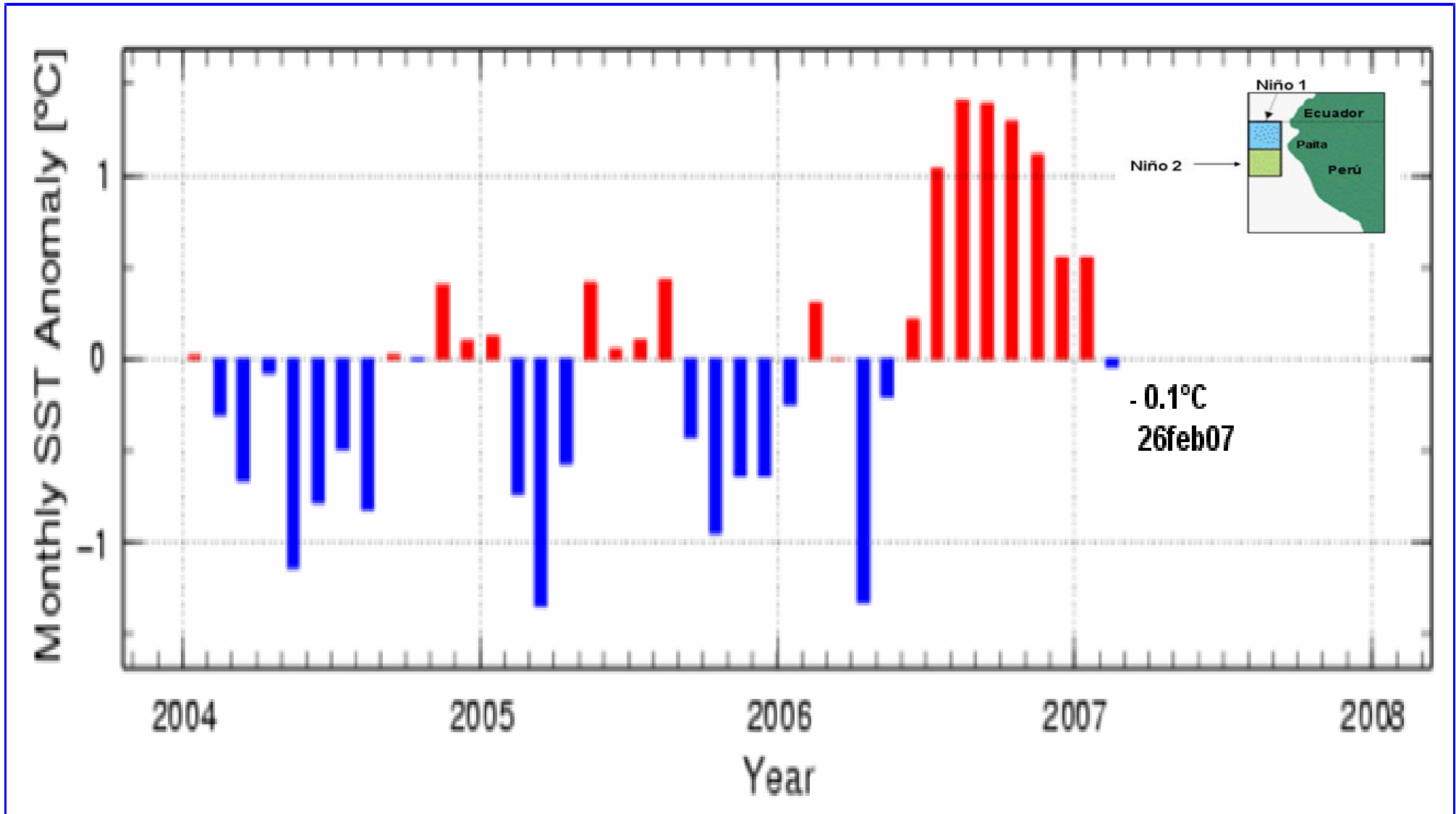
Ciclo Anual de Temperatura Superficial del Mar (°C)



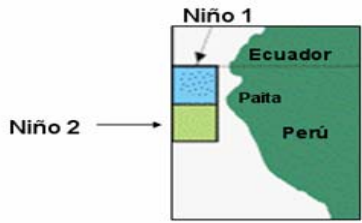
Serie de Tiempo del Promedio Semanal de Anomalia TSM en la región Niño 1+2



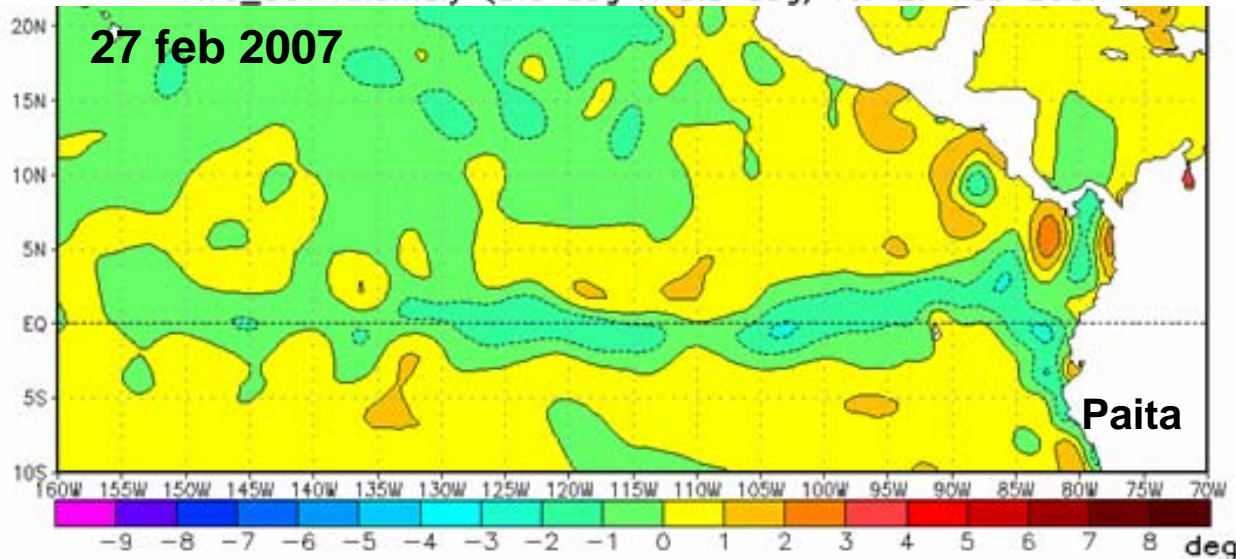
Serie de Tiempo del Promedio Mensual de Anomalia TSM en la región Niño 1+2



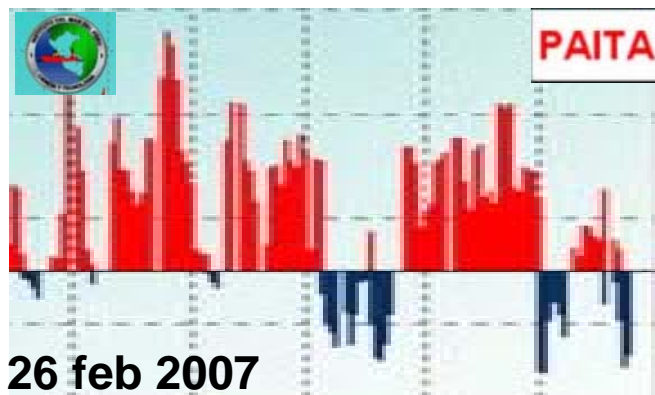
“Enfriamiento en la Costa Norte del Perú (Tumbes y Piura)”



NOAA/NWS/NCEP/EMC Marine Modeling and Analysis Branch
 RTG_SST Anomaly (0.5 deg X 0.5 deg) for 27 Feb 2007



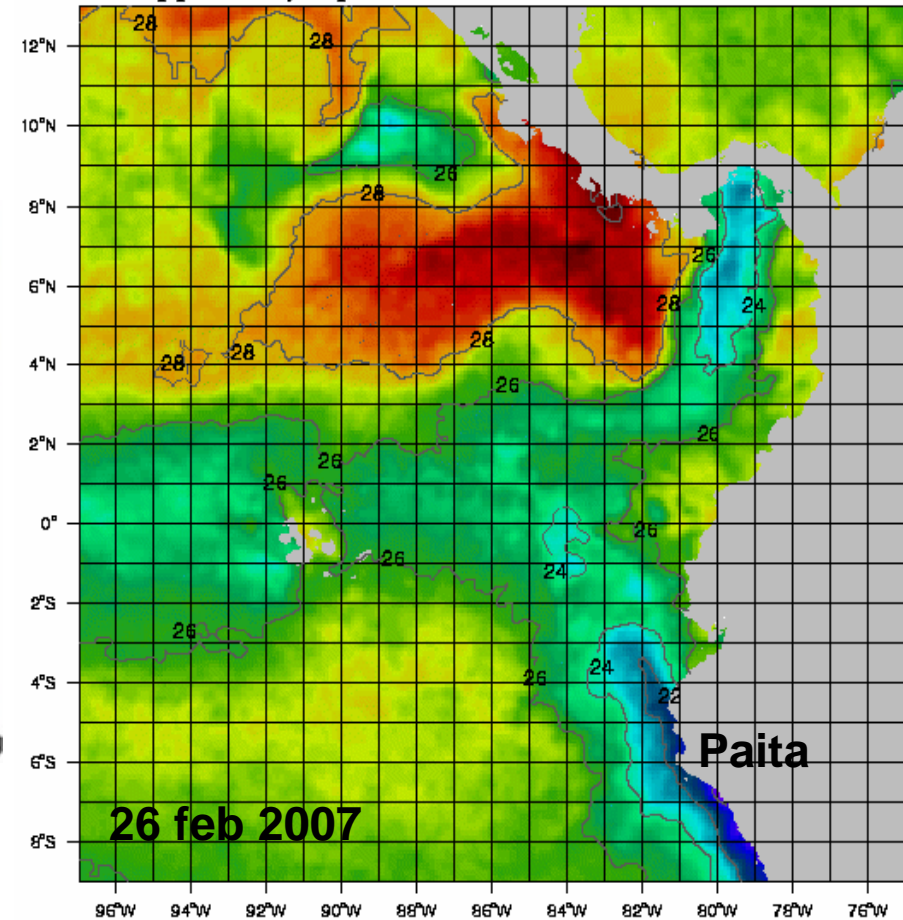
Anomalía de Temperatura Superficial Mar (°C)



26 feb 2007

-1.4°C

NAVOCEANO MCSST K10 Composite 26FEB07
 Approved for public release: Distribution unlimited



Temperatura Superficial Mar (°C)

Paita:	TSM	17 feb 2007	23.6°C
		26 feb 2007	20.0°C

Fuente: DHN