



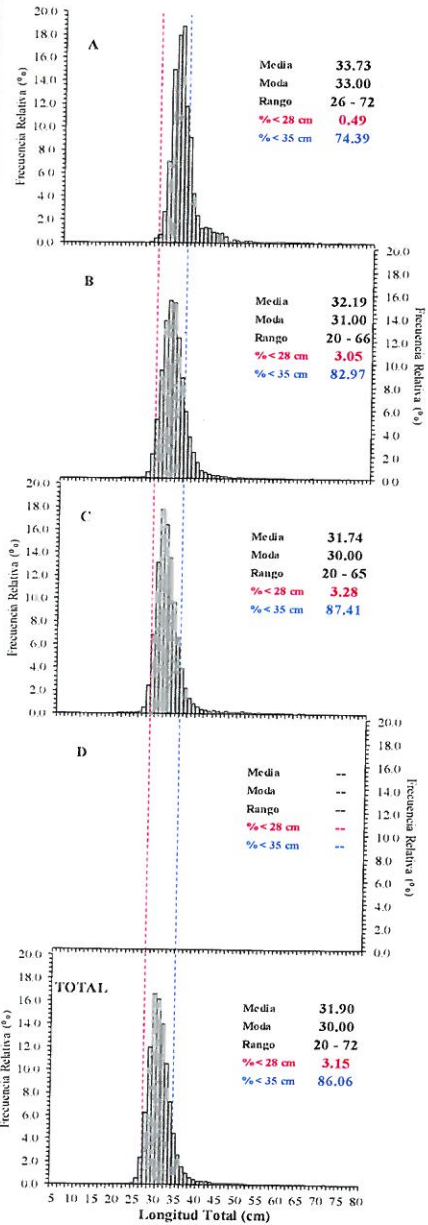
Reporte I. Pesquería de Merluza

14 de Mayo de 2017

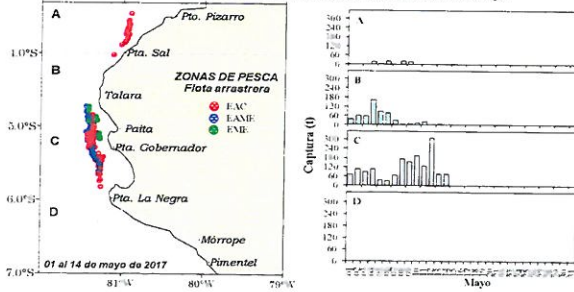
Desembarque (t) de Recursos Demersales de la Flota Arrastrera

DIA	INDUSTRIAL			TOTAL MERLUZA	Otros demersales	TOTAL	Número embarcaciones		
	EAC	EAME	EME				EAC	EAME	EME
Jul - 16	1712.6	1475.7	4.2	3192.4	226.2	3418.7			
Ago - 16	1870.6	1553.9	3.1	3427.7	547.2	3974.8			
Set - 16	1389.8	1282.6	7.7	2680.1	275.6	2955.7			
Oct - 16	208.3	29.6	2.4	240.2	40.5	280.7			
Nov - 16	2788.6	2106.8	48.2	4943.6	236.9	5180.5			
Dic - 16	2752.2	1931.6	45.3	4729.1	144.2	4873.3			
Ene - 17	2058.1	1833.7	22.5	3894.4	147.8	4042.2			
Feb - 17	2163.1	1987.5	44.8	4195.3	134.3	4329.5			
Mar - 17	2846.4	2276.9	3.5	5126.8	90.7	5217.5			
Abr - 17	2978.5	2358.4	34.2	5371.1	187.2	5558.4			
1 - May	70.9	35.9		106.7	2.5	109.2	4	1	
2 - May	59.8	107.3		167.0	4.2	171.3	4	3	
3 - May	86.2	59.4	0.0	145.6	10.4	156.0	5	2	1
4 - May	123.3	163.0	0.0	286.3	15.2	301.5	8	3	1
5 - May	69.7	58.3	0.0	128.0	14.6	142.6	7	2	1
6 - May	74.3	53.5	0.0	127.8	12.8	140.6	4	2	1
7 - May	47.4	49.4	0.0	96.9	10.1	107.0	4	2	1
8 - May	176.0	22.7		198.7	4.8	203.4	12	1	
9 - May	120.5	59.9	0.1	180.4	13.3	193.7	10	2	1
10 - May	133.7	73.6	0.0	207.4	16.6	224.0	12	2	1
11 - May	112.6	34.1	1.7	148.4	10.7	159.1	10	2	1
12 - May	142.0	164.6	0.0	306.5	14.5	321.1	11	3	1
13 - May	29.0	50.1	0.0	79.2	10.1	89.3	3	2	1
14 - May	48.8	25.4		74.2	2.1	76.3	4	1	
Total	22042.3	17793.7	217.8	40053.9	2172.6	42226.4			

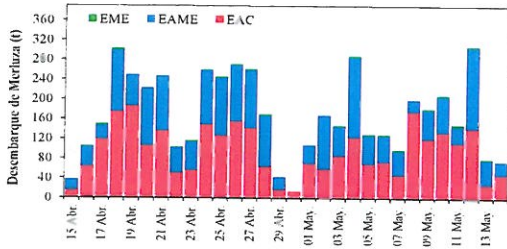
Estructura de Tallas por Subáreas del 01 al 14 Mayo



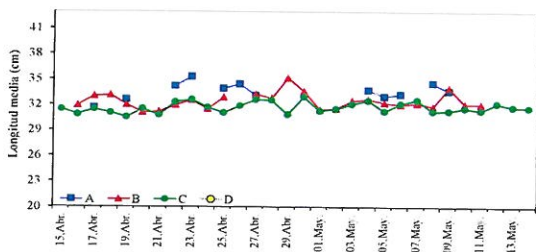
Distribución espacial de la flota y captura (t) por subárea del 01 al 14 Mayo



Desembarque de Merluza (t) por tipo de Flota



Longitud media (cm) de Merluza por subáreas



Estadísticas descriptivas de la estructura de tallas de Merluza por subárea del 01 al 14 Mayo

Día	A				B				C				D			
	Rango	Moda	Media	% < 28 cm	Rango	Moda	Media	% < 28 cm	Rango	Moda	Media	% < 28 cm	Rango	Moda	Media	% < 28 cm
1-May					25 - 57	30	31.4	5.1	25 - 57	30	31.8	3.0				
2-May					23 - 58	30	31.5	3.7	24 - 59	30	31.5	4.0				
3-May					20 - 54	32	32.4	1.4	21 - 56	31	32.1	1.7				
4-May	26 - 65	32	33.7	0.5	22 - 66	32	32.6	1.5	22 - 65	32	32.5	2.0				
5-May	28 - 43	33	33.0	0.0	21 - 59	32	32.2	2.9	20 - 51	30	31.2	3.7				
6-May	26 - 60	33	33.3	0.1	24 - 59	31	32.0	4.0	23 - 56	30	32.1	4.3				
7-May					23 - 57	31	31.8	3.0	22 - 60	30	31.3	4.5				
8-May	27 - 72	33	34.5	1.7	25 - 50	31	32.2	6.7	20 - 64	30	32.6	3.8				
9-May	28 - 51	34	33.7	0.0	27 - 51	34	34.0	0.7	22 - 60	30	31.6	5.1				
10-May					26 - 59	31	32.1	4.9	21 - 61	30	31.6	5.1				
11-May					25 - 55	32	32.1	3.6	21 - 57	30	31.3	2.9				
12-May									23 - 61	30	32.2	2.1				
13-May									26 - 55	31	31.8	3.3				
14-May									26 - 59	31	31.7	2.1				

Cifras preliminares.

