



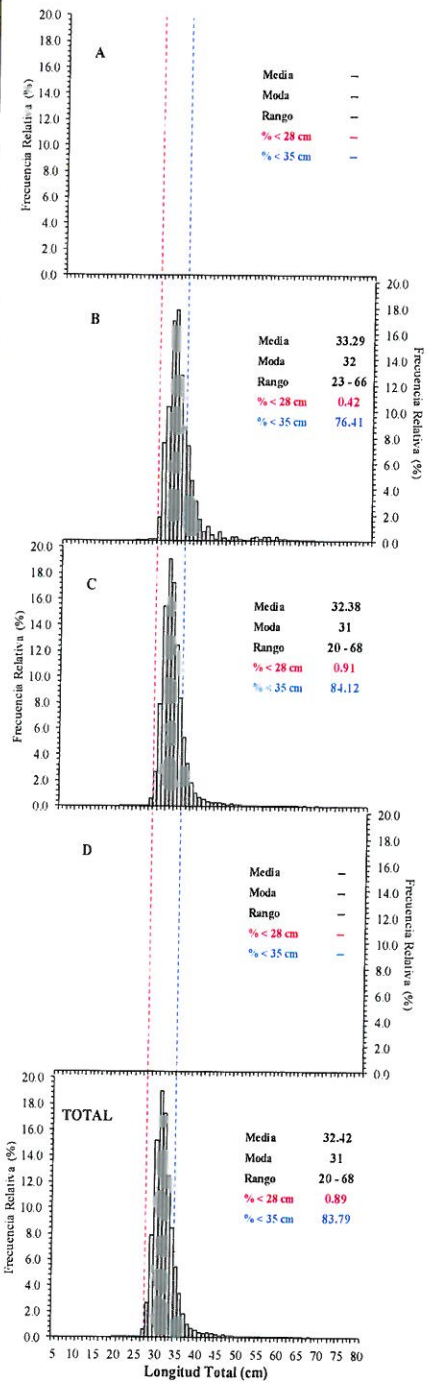
Reporte 1. Pesquería de Merluza

14 de junio de 2017

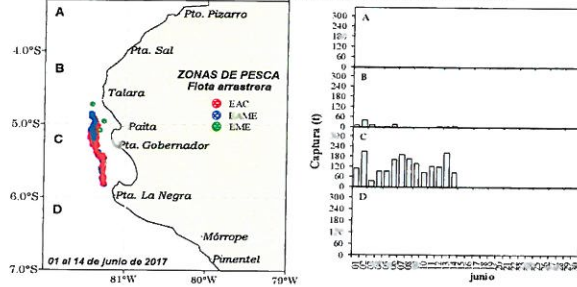
Desembarque (t) de Recursos Demersales de la Flota Arrastrera

DIA	INDUSTRIAL			TOTAL MERLUZA	Otros demersales	TOTAL	Número embarcaciones		
	EAC	EAME	EME				EAC	EAME	EME
Jul - 16	1712.6	1475.7	4.2	3192.4	226.2	3418.7			
Ago - 16	1870.6	1553.9	3.1	3427.7	547.2	3974.8			
Set - 16	1389.8	1282.6	7.7	2680.1	275.6	2955.7			
Oct - 16	208.3	29.6	2.4	240.2	40.5	280.7			
Nov - 16	2788.6	2106.8	48.2	4943.6	236.9	5180.5			
Dic - 16	2752.2	1931.6	45.3	4729.1	144.2	4873.3			
Ene - 17	2038.1	1833.7	22.5	3894.4	147.8	4042.2			
Feb - 17	2163.1	1987.5	44.8	4195.3	134.3	4329.5			
Mar - 17	2846.4	2276.9	3.5	5126.8	90.7	5217.5			
Abr - 17	2978.5	2358.4	34.2	5371.1	187.2	5558.4			
May - 17	2454.6	2129.4	2.0	4586.1	267.3	4853.4			
01 - jun	57.3	63.2	0.0	120.5	3.0	123.5	5	2	
02 - jun	101.2	146.3	0.0	247.5	5.2	252.7	7	3	
03 - jun	11.8	34.4	0.0	46.3	0.9	47.2	1	1	
04 - jun	92.1	0.0	0.0	92.1	4.1	96.1	7	1	1
05 - jun	66.1	28.4	0.0	94.5	3.0	97.4	5	1	1
06 - jun	70.8	106.9	0.0	177.7	6.1	183.8	6	3	
07 - jun	102.2	88.6	0.0	190.8	7.9	198.7	9	3	
08 - jun	89.7	76.1	0.0	165.8	5.6	171.4	6	3	
09 - jun	70.6	67.6	0.0	138.2	4.3	142.4	6	2	
10 - jun	85.1	0.0	0.0	85.1	1.0	86.2	5	0	
11 - jun	120.7	0.0	0.0	120.7	2.7	123.4	8	0	
12 - jun	54.6	65.2	0.0	119.8	4.7	124.5	4	2	
13 - jun	134.1	69.9	0.0	204.0	7.8	211.7	7	2	
14 - jun	20.7	71.2	0.0	91.9	1.2	93.1	1	2	
<b>Total</b>	<b>24279.8</b>	<b>19783.8</b>	<b>217.9</b>	<b>44281.5</b>	<b>2355.3</b>	<b>46636.8</b>			

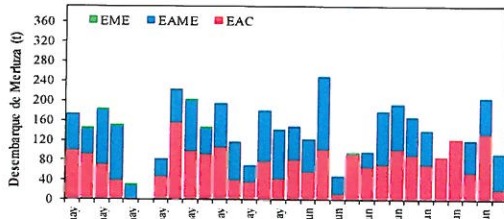
Estructura de Tallas por Subáreas del 01 al 14 junio



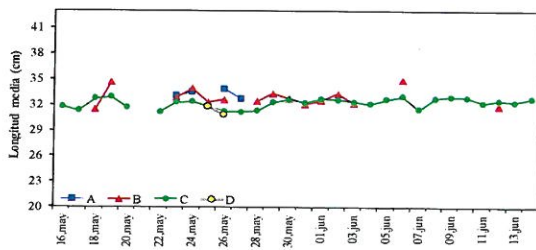
Distribución espacial de la flota y captura (t) por subáreas del 01 al 14 junio



Desembarque de Merluza (t) por tipo de Flota



Longitud media (cm) de Merluza por subáreas



Estadísticas descriptivas de la estructura de tallas de Merluza por subárea del 01 al 14 junio

Día	A				B				C				D			
	Rango	Moda	Media	% < 28 cm	Rango	Moda	Media	% < 28 cm	Rango	Moda	Media	% < 28 cm	Rango	Moda	Media	% < 28 cm
01-jun					28 - 37	32	32.4	0.0	23 - 59	31	32.6	0.8				
02-jun					28 - 37	32	33.3	0.0	23 - 63	31	32.5	0.3				
03-jun					28 - 55	31	32.1	0.0	28 - 59	31	32.2	0.0				
04-jun									20 - 56	31	32.0	0.7				
05-jun									26 - 65	31	32.5	0.3				
06-jun					28 - 66	32	34.8	0.0	22 - 62	32	32.9	0.5				
07-jun									21 - 61	31	31.4	2.0				
08-jun									22 - 60	31	32.7	1.6				
09-jun									24 - 59	31	32.8	0.8				
10-jun									26 - 56	32	32.8	0.7				
11-jun									26 - 56	32	32.8	0.7				
12-jun					23 - 43	32	31.8	7.4	25 - 60	31	32.1	1.0				
13-jun									20 - 65	31	32.4	1.3				
14-jun					31 - 65	35	43.5	0.0	24 - 63	31	32.2	1.1				
									21 - 63	31	32.7	0.4				

Cifras preliminares.

