



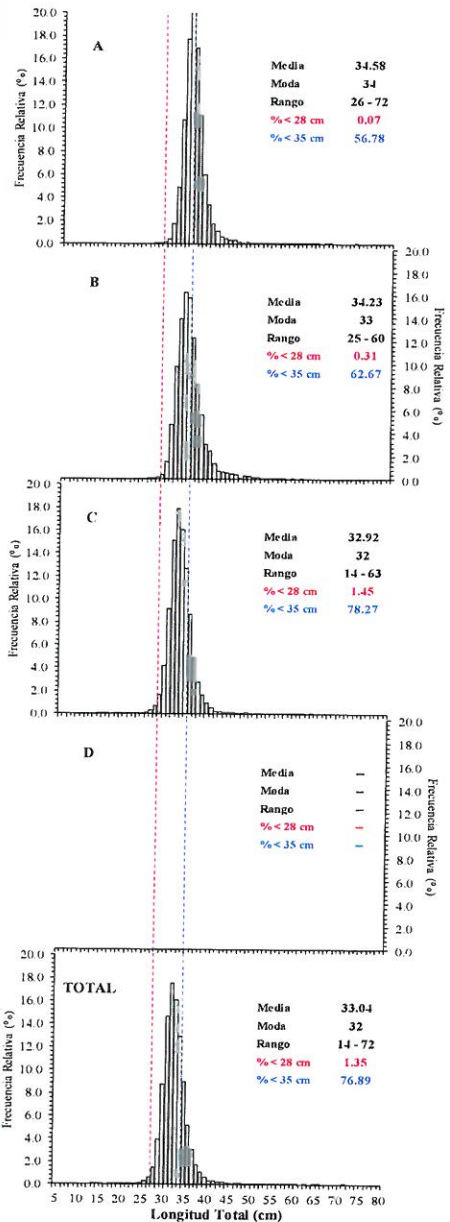
Reporte 1. Pesquería de Merluza

31 de Julio de 2017

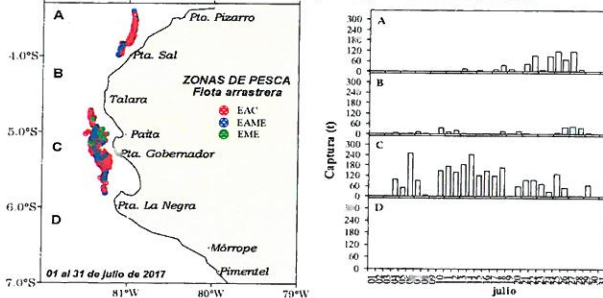
Desembarque (t) de Recursos Demersales de la Flota Arrastreera

DIA	INDUSTRIAL			TOTAL MERLUZA	Otros demersales	TOTAL	Número embarcaciones		
	EAC	EAME	EME				EAC	EAME	EME
01-15 Jul	907.5	727.4	4.6	1639.5	65.6	1705.1			
16 Jul	92.3	59.4		151.7	5.7	157.5	8	2	
17 Jul	63.4	69.9	0.5	133.8	9.8	143.7	8	2	1
18 Jul	90.4	129.1	0.7	220.3	8.1	228.4	7	3	1
19 Jul	13.3	1.2	0.0	14.6	5.0	19.6	1	1	1
20 Jul	56.4	19.1		75.5	1.1	76.5	4	1	
21 Jul	68.8	77.6	1.4	147.8	15.6	163.4	6	2	1
22 Jul	103.8	83.9		187.7	4.4	192.1	9	3	
23 Jul	30.0	50.3		80.2	1.4	81.6	3	2	
24 Jul	115.3		0.8	116.1	9.1	125.3	8		1
25 Jul	146.7	112.0	0.0	258.7	10.6	269.3	10	3	1
26 Jul	84.4	78.8		163.2	4.5	167.7	7	2	
27 Jul	122.2	41.0		163.2	3.0	166.2	9	1	
28 Jul	13.5	37.3	0.6	51.3	8.7	60.0	1	1	1
29 Jul	6.5	69.7	0.0	76.2	8.6	84.8	1	1	1
*30 Jul									
*31 Jul									
Total	1914.5	1556.7	8.7	3479.8	161.3	3641.2			

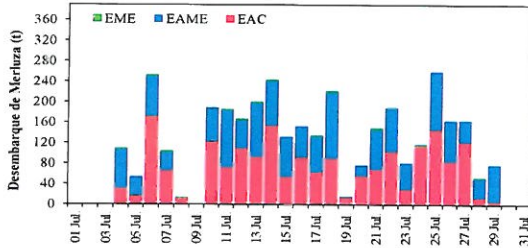
Estructura de Tallas por Subáreas del 01 al 31 Julio



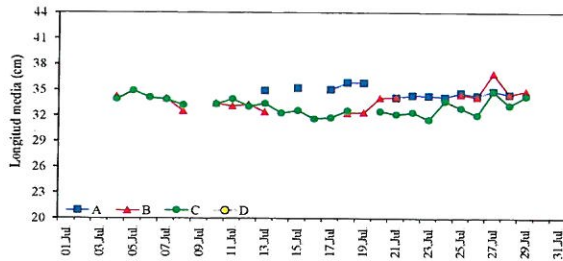
Distribución espacial de la flota y captura (t) por subárea del 01 al 31 Julio



Desembarque de Merluza (t) por tipo de Flota



Longitud media (cm) de Merluza por subáreas



Estadísticas descriptivas de la estructura de tallas de Merluza por subárea del 16 al 31 Julio

Dia	A				B				C				D			
	Rango	Moda	Media	% < 28 cm	Rango	Moda	Media	% < 28 cm	Rango	Moda	Media	% < 28 cm	Rango	Moda	Media	% < 28 cm
16-Jul																
17-Jul	30 - 49	34	35.0	0.0					22 - 49	31	31.6	2.9				
18-Jul	27 - 72	34	35.8	0.1	28 - 52	32	32.3	0.0	14 - 54	32	31.7	2.7				
19-Jul	30 - 54	34	35.8	0.0	27 - 49	32	32.4	1.3	19 - 55	32	32.5	1.4				
20-Jul					29 - 45	34	34.1	0.0	26 - 51	32	32.5	0.3				
21-Jul	28 - 57	34	34.1	0.0	26 - 50	34	34.2	0.9	14 - 57	32	32.1	2.8				
22-Jul	27 - 62	34	34.3	0.1					21 - 57	32	32.3	1.8				
23-Jul	27 - 45	33	34.3	1.1					23 - 54	31	31.5	5.8				
24-Jul	26 - 60	34	34.1	0.1					27 - 59	33	33.6	0.1				
25-Jul	27 - 66	34	34.6	0.1	30 - 51	34	34.5	0.0	22 - 60	33	32.8	5.4				
26-Jul	26 - 56	34	34.3	0.1	25 - 53	34	34.2	0.5	25 - 52	31	32.0	2.1				
27-Jul	26 - 63	34	34.8	0.1	29 - 56	35	36.9	0.0	26 - 43	34	34.8	0.9				
28-Jul	29 - 48	33	34.5	0.0	29 - 56	33	34.5	0.0	27 - 53	33	33.2	2.5				
29-Jul					29 - 47	36	34.9	0.0	28 - 56	33	34.2	0.0				
*30-Jul																
*31-Jul																

Cifras preliminares

(*) No se registraron desembarques debido a que no hubo pesca.



R. GUEVARA

