



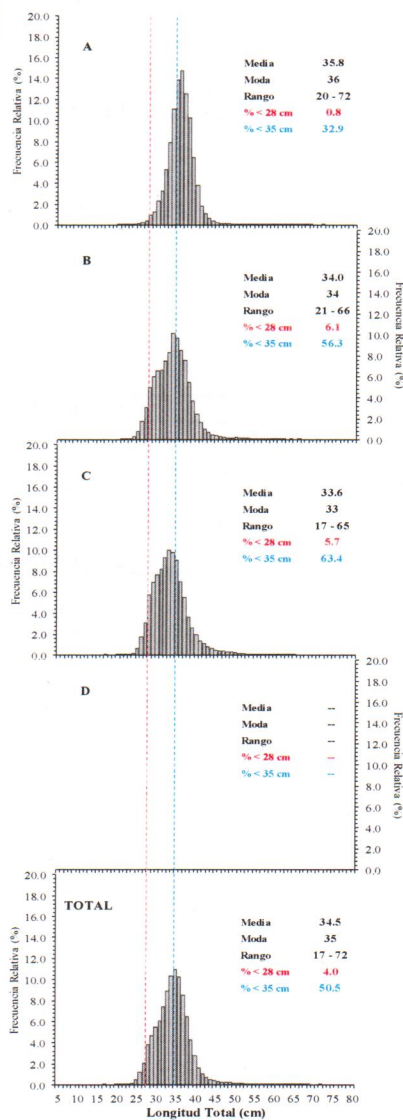
Reporte 1. Pesquería de Merluza

30 de Junio de 2018

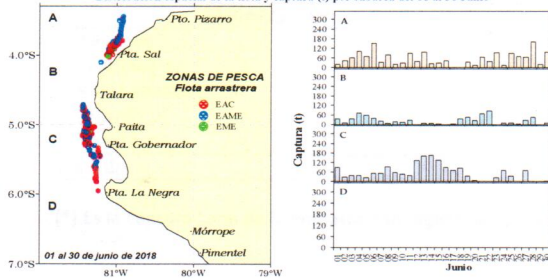
Desembarque (t) de Recursos Demersales de la Flota Arrastrea

DIA	INDUSTRIAL			TOTAL MERLUZA	Otros demersales	TOTAL	Número embarcaciones		
	EAC	EAME	EME				EAC	EAME	EME
Jul-17	1914.5	1556.7	8.7	3479.8	161.3	3641.2			
Ago-17	2621.7	2515.0	11.1	5147.8	178.1	5325.9			
Sep-17	149.2	--	0.0	149.2	33.4	182.6			
Oct-17	1927.9	1033.4	18.0	2979.3	165.4	3144.8			
Nov-17	2700.6	2133.3	1.3	4835.2	234.5	5069.7			
Dic-17	3640.5	1575.1	11.2	5226.8	198.1	5424.9			
Ene-18	3249.4	2280.4	0.6	5530.4	173.4	5703.8			
Feb-18	2665.0	2353.1	5.8	5024.0	199.3	5223.3			
Mar-18	2595.2	2775.2	59.0	5429.4	184.3	5613.7			
Abr-18	1382.0	2115.3	51.4	3548.7	100.7	3649.4			
May-18	1743.9	2263.9	24.9	4032.6	178.0	4210.7			
01-15 Jun	1243.7	1120.5	--	2364.2	65.2	2429.4			
16-Jun	44.4	89.3	--	133.6	2.2	135.8	4	2	
17-Jun	71.4	--	--	71.4	1.3	72.7	5		
18-Jun	43.9	77.2	1.1	122.2	5.8	128.1	4	2	1
19-Jun	30.8	82.5	1.9	115.2	9.2	124.3	4	2	1
20-Jun	15.2	28.0	1.2	44.4	8.6	53.0	3	1	1
21-Jun	37.8	92.1	--	129.9	6.1	136.0	2	2	
22-Jun	52.5	68.8	--	121.3	2.4	123.7	4	2	
23-Jun	64.3	51.7	--	116.0	4.1	120.1	5	2	
24-Jun	39.2	51.6	--	90.7	2.8	93.5	3	2	
25-Jun	57.9	72.6	4.1	134.7	7.4	142.2	5	3	1
26-Jun	67.6	--	--	67.6	2.0	69.6	5		
27-Jun	78.2	77.2	6.8	162.2	5.1	167.4	5	1	1
28-Jun	78.6	130.0	0.0	208.6	3.0	211.6	5	3	
29-Jun	13.0	--	7.6	20.6	1.4	22.1	1	1	1
30-Jun	25.9	83.0	0.0	108.9	2.8	111.7	2	3	
Total	26554.5	22625.8	214.7	49395.0	1936.1	51331.07			

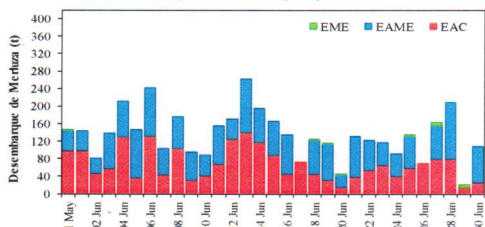
Estructura de Tallas por Subáreas del 01 al 30 Junio



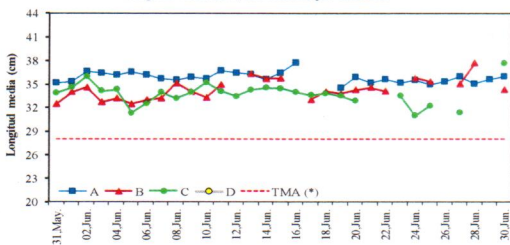
Distribución espacial de la flota y captura (t) por subárea del 01 al 30 Junio



Desembarque de Merluza (t) por tipo de Flota



Longitud media (cm) de Merluza por subáreas



Estadísticas descriptivas de la estructura de tallas de Merluza por subárea del 16 al 30 Junio

Dia	A				B				C				D			
	Rango	Moda	Media	%<28 cm	Rango	Moda	Media	%<28 cm	Rango	Moda	Media	%<28 cm	Rango	Moda	Media	%<28 cm
16-Jun	28 - 69	37	37.8	0.0					24 - 51	33	33.9	4.3				
17-Jun					25 - 54	33	33.0	4.7	22 - 60	33	33.5	5.8				
18-Jun					24 - 53	33	34.0	5.2	21 - 58	33	33.8	4.8				
19-Jun	28 - 69	34	34.5	0.0	24 - 54	33	33.8	5.5	24 - 55	31	33.4	5.5				
20-Jun	25 - 50	35	35.8	1.0	25 - 50	36	34.3	4.8	24 - 51	31	32.8	5.3				
21-Jun	25 - 66	34	35.1	0.8	25 - 52	35	34.5	4.6								
22-Jun	25 - 57	36	35.6	1.4	25 - 54	34	34.1	3.5								
23-Jun	25 - 56	35	35.1	1.6					20 - 54	33	33.5	7.2				
24-Jun	28 - 44	35	35.4	0.0	24 - 52	37	35.8	5.1	24 - 57	29	30.9	11.2				
25-Jun	24 - 54	36	34.9	1.1	25 - 49	35	35.3	1.6	22 - 53	29	32.2	11.2				
26-Jun	25 - 53	35	35.3	1.1												
27-Jun	25 - 53	36	35.9	0.4	26 - 54	37	35.0	1.1	22 - 64	30	31.3	11.3				
28-Jun	26 - 60	35	35.0	0.3	28 - 64	36	37.7	0.0								
29-Jun	26 - 50	36	35.6	0.5												
30-Jun	28 - 56	36	36.0	0.0	25 - 49	35	34.3	2.1	27 - 56	37	37.6	0.7				

Cifras preliminares.

(*) TMA: Talla mínima autorizada (28cm)



R. GUEVARA



C. YAMASHIRO



V. BLASKOVIĆ