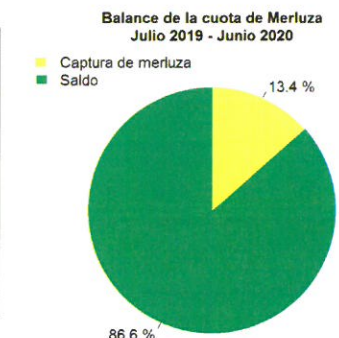
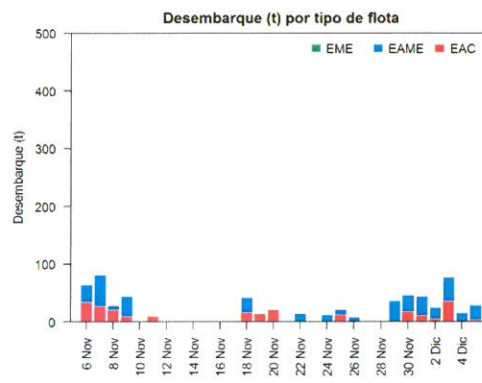
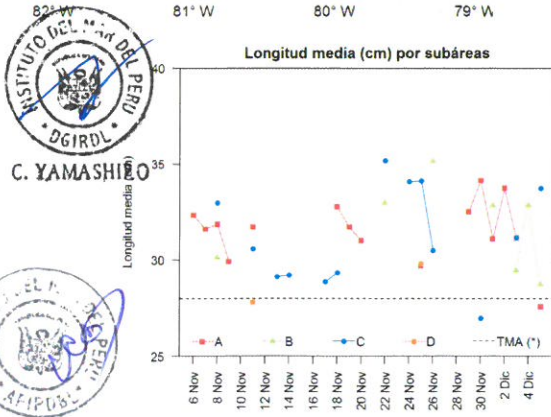
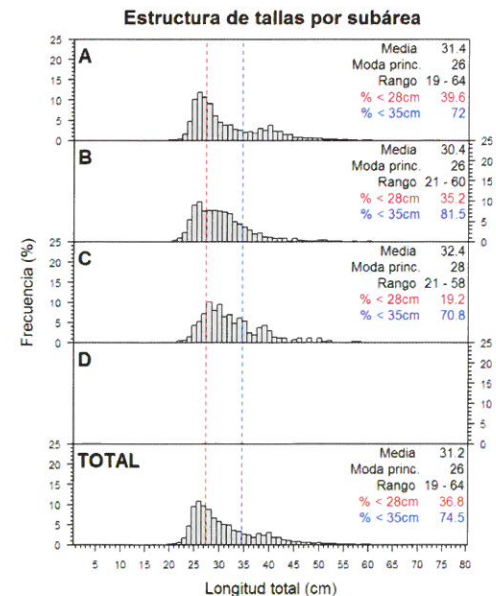
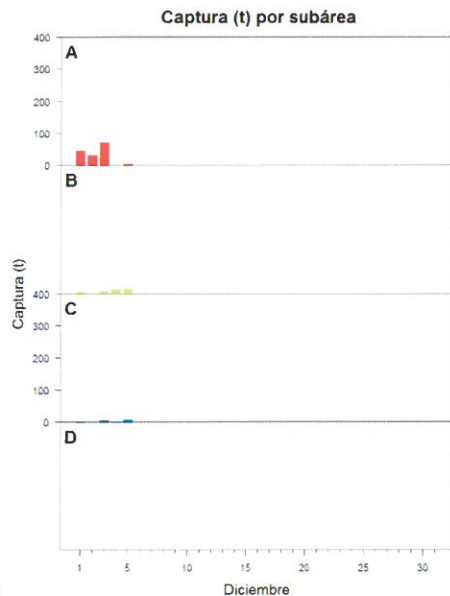
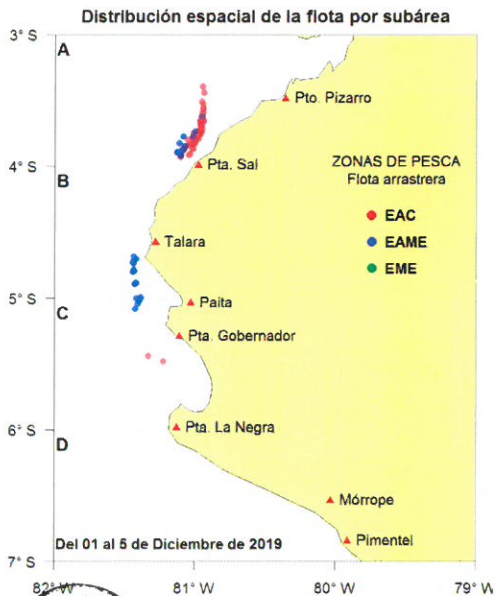




Reporte 1. Pesquería de Merluza
Al 5 de diciembre de 2019

Desembarque (t) de recursos demersales de la flota arrastrera

	INDUSTRIAL			TOTAL	OTROS	TOTAL	Número embarcaciones		
	EAC	EAME	EME	merluza	demersales		EAC	EAME	EME
jul 2019	989.8	1167.2		2157.0	333.8	2490.8			
ago 2019	1176.4	1732.7		2909.1	728.3	3637.4			
sep 2019	340.4	701.4		1041.8	148.6	1190.4			
oct 2019	502.9	456.7		959.6	293.9	1253.5			
nov 2019	264.8	368.2		633.0	180.3	813.3			
1 Dic	11.3	32.7		44.0	12.4	56.4	1	1	
2 Dic	5.6	19.1		24.7	9.4	34.1	2	1	
3 Dic	36	41.1		77.1	13.3	90.4	5	2	
4 Dic		14.9		14.9	1.6	16.5		1	
5 Dic	3.4	24.7		28.1	6.2	34.3	1	2	
TOTAL	3330.6	4558.7		7889.3	1727.8	9617.1	9	7	



Estadísticas descriptivas de la estructura de tallas por subárea al 5 de diciembre de 2019

	A				B				C				D			
	Rango	Moda	Media	% < 28cm	Rango	Moda	Media	% < 28cm	Rango	Moda	Media	% < 28cm	Rango	Moda	Media	% < 28cm
29-Nov	21 - 56	28	32.6	17												
30-Nov	21 - 65	27	34.2	18.4					23 - 39	26	27	70.7				
1-Dic	20 - 56	27	31.1	37.8	23 - 60	29	32.9	14.2								
2-Dic	22 - 62	28	33.8	23.2												
3-Dic	19 - 64	26	31.2	43.7	21 - 57	25	29.5	40.5	22 - 52	28	31.2	27.5				
4-Dic					23 - 60	31	32.9	17.5								
5-Dic	20 - 49	25	27.6	70.6	21 - 56	26	28.8	48.3	21 - 58	31	33.8	10.3				

Cifras preliminares.
(*) Talla Mínima Autorizada