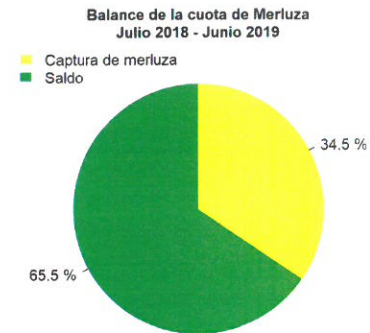
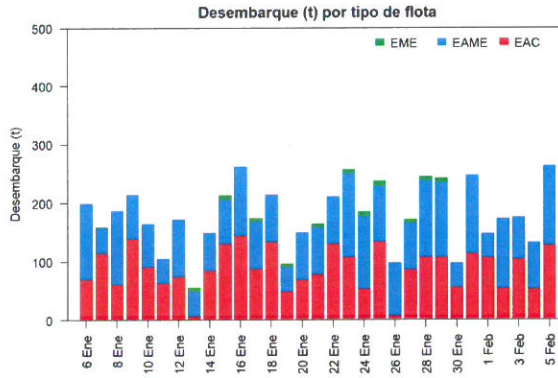
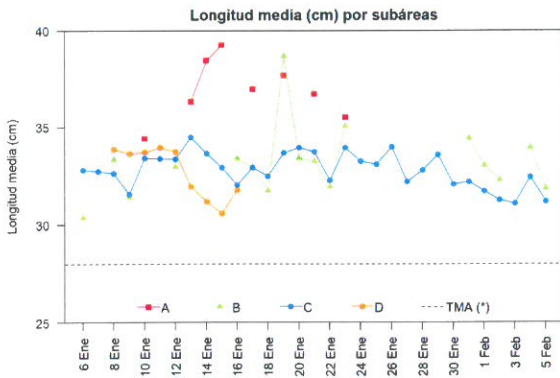
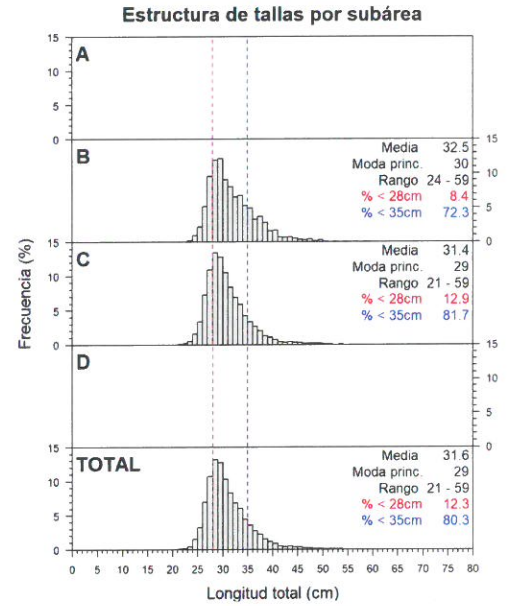
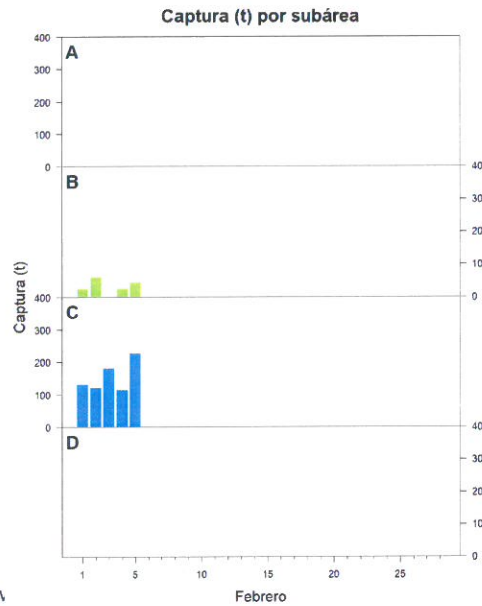
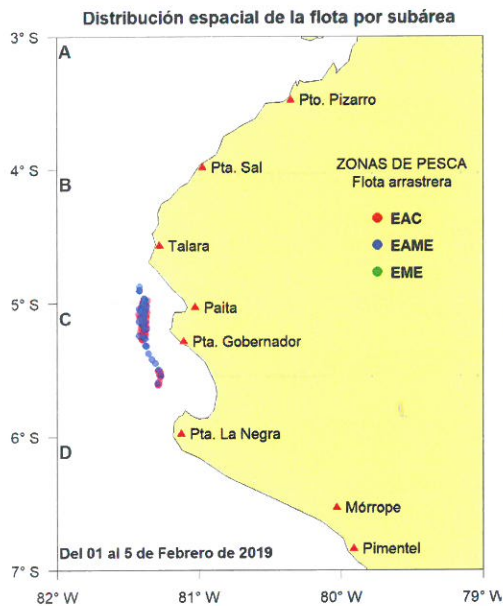




**Reporte 1. Pesquería de Merluza**  
**Al 5 de febrero de 2019**

Desembarque (t) de recursos demersales de la flota arrastrera

	INDUSTRIAL			TOTAL	OTROS	TOTAL	Número embarcaciones		
	EAC	EAME	EME	merluza	demersales		EAC	EAME	EME
Jul. 2018	1403.3	1512.9	12.6	2928.8	231.0	3159.8			
Ago. 2018	1297.9	1662.8	12.8	2973.5	214.1	3187.6			
Set. 2018	181.1	122.2	2.3	305.6	155.2	460.8			
Oct. 2018	1574.1	1476.4	6.6	3057.1	277.7	3334.8			
Nov. 2018	831.1	1036.0	8.7	1875.8	716.0	2591.8			
Dic. 2018	1921.6	1545.7	51.9	3519.2	650.7	4169.9			
Ene. 2019	2669.6	2599.9	83.3	5352.8	140.4	5493.2			
1 Feb	105.6	42.3		147.9	3.2	151.1	6	1	
2 Feb	52.9	120.5		173.4	3.4	176.8	4	3	
3 Feb	102.8	72.4		175.2	4.1	179.3	6	2	
4 Feb	51.0	81.2		132.2	2.0	134.2	4	2	
5 Feb	126.7	136.1		262.8	4.6	267.4	7	3	
<b>TOTAL</b>	<b>10317.7</b>	<b>10408.4</b>	<b>178.2</b>	<b>20904.3</b>	<b>2402.4</b>	<b>23306.7</b>	<b>27</b>	<b>11</b>	



Estadísticas descriptivas de la estructura de tallas por subárea al 5 de febrero de 2019

	A				B				C				D			
	Rango	Moda	Media	%<28cm	Rango	Moda	Media	%<28cm	Rango	Moda	Media	%<28cm	Rango	Moda	Media	%<28cm
1-Feb					24 - 50	30	33	8.5	22 - 59	29	31.7	13				
2-Feb					25 - 57	29	32.3	10.1	22 - 57	29	31.3	11.8				
3-Feb									23 - 54	29	31.1	12.9				
4-Feb					25 - 59	31	33.9	3	21 - 57	30	32.4	9.7				
5-Feb					24 - 51	30	31.8	8.7	21 - 56	29	31.2	14.9				

Cifras preliminares

(\*) Talla Mínima Autorizada



V. BLASKOVIĆ



S. YAMASHIRO



R. GUEVARA