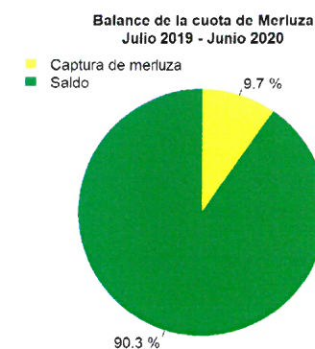
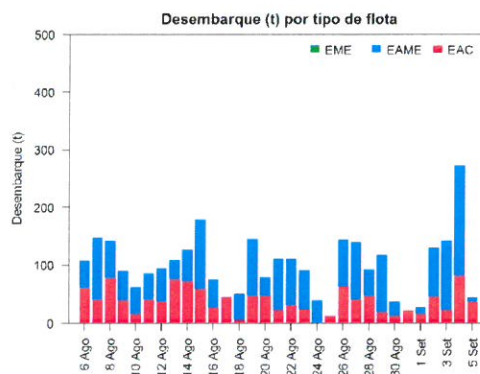
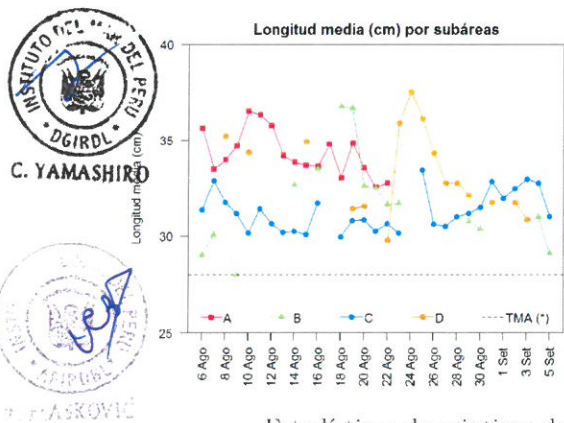
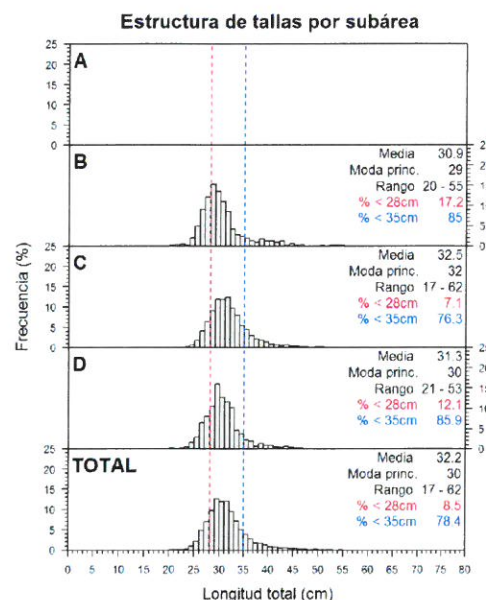
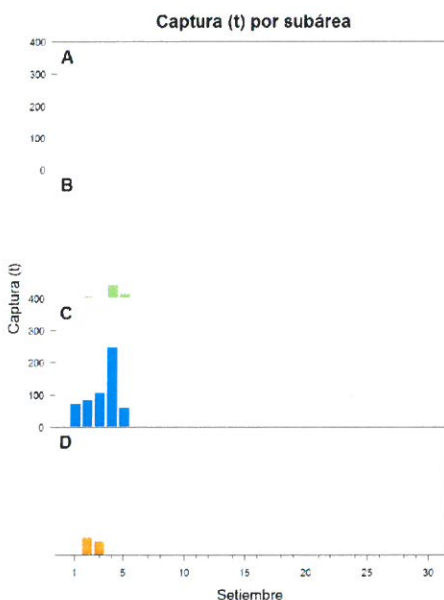
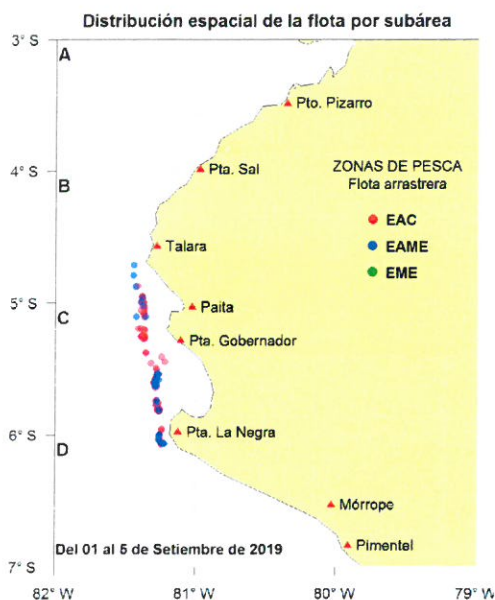




Reporte 1. Pesquería de Merluza
Al 5 de setiembre de 2019

Desembarque (t) de recursos demersales de la flota arrastrera

	INDUSTRIAL			TOTAL	OTROS	TOTAL	Número embarcaciones		
	EAC	EAME	EME	merluza	demersales		EAC	EAME	EME
jul 2019	989.8	1167.2		2157.0	333.8	2490.8			
ago 2019	1176.4	1732.7		2909.1	728.3	3637.4			
1 Set	15.0	11.5		26.5	42.3	68.8	3	1	
2 Set	45.0	83.6		128.6	7.9	136.5	5	2	
3 Set	21.8	119.2		141.0	2.4	143.4	2	3	
4 Set	80.3	191.7		272.0	10.3	282.3	9	4	
5 Set	35.5	8.7		44.2	22.1	66.3	8	1	
TOTAL	2363.8	3314.6		5678.4	1147.1	6825.5	27	11	



Estadísticas descriptivas de la estructura de tallas por subárea al 5 de setiembre de 2019

	A				B				C				D			
	Rango	Moda	Media	% < 28cm	Rango	Moda	Media	% < 28cm	Rango	Moda	Media	% < 28cm	Rango	Moda	Media	% < 28cm
1-Set									17 - 51	28	32	8.4				
2-Set									21 - 58	31	32.5	6.6	23 - 53	30	31.7	10
3-Set									21 - 62	31	3.3	6.3	21 - 50	30	30.8	14.5
4-Set					21 - 55	29	31	16.8	22 - 58	32	32.8	6.6				
5-Set					20 - 44	28	29.1	28.4	20 - 57	30	31	11.1				

Cifras preliminares.
(* Talla Mínima Autorizada)