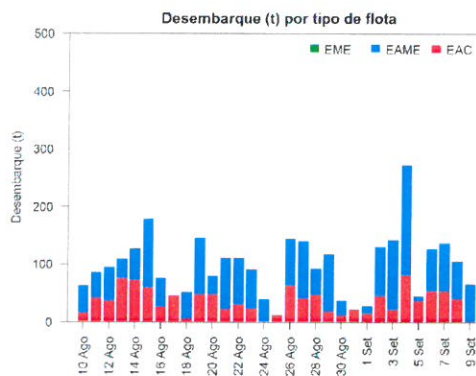
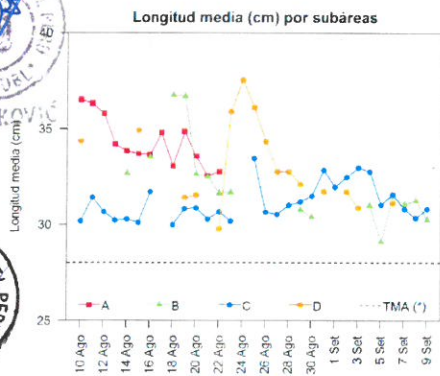
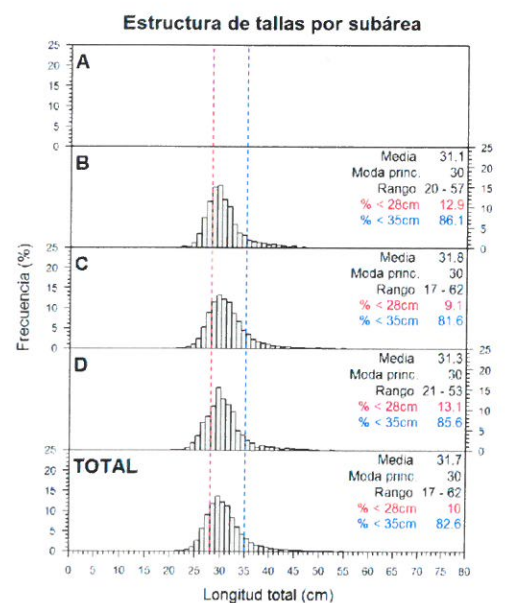
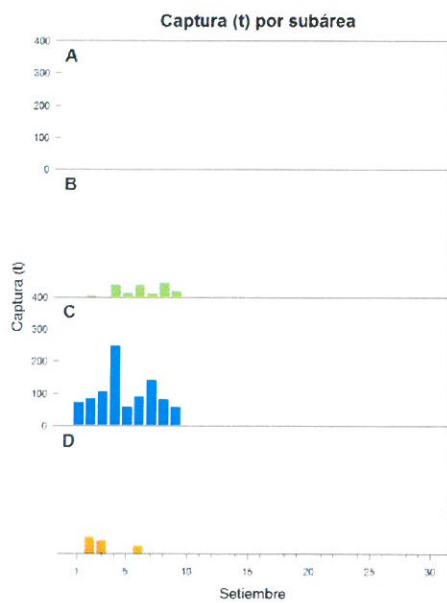
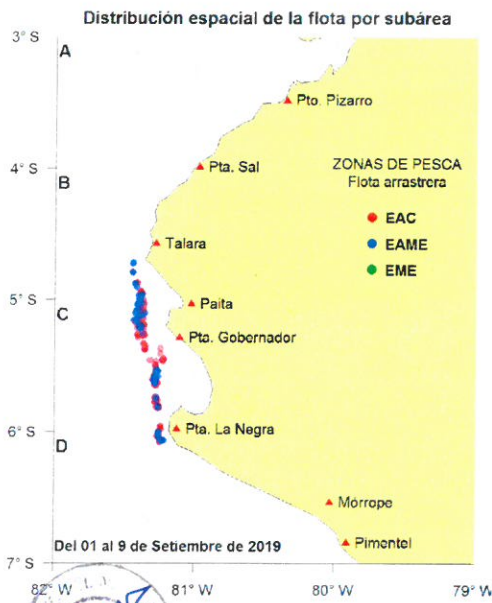




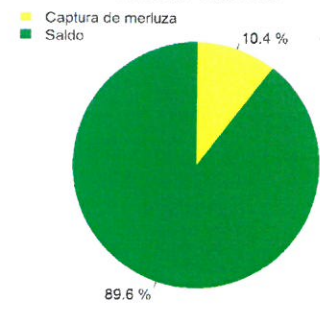
Reporte 1. Pesquería de Merluza  
Al 9 de setiembre de 2019

Desembarque (t) de recursos demersales de la flota arrastrera

	INDUSTRIAL			TOTAL	OTROS	TOTAL	Número embarcaciones		
	EAC	EAME	EME	merluza	demersales		EAC	EAME	EME
jul 2019	989.8	1167.2		2157.0	333.8	2490.8			
ago 2019	1176.4	1732.7		2909.1	728.3	3637.4			
01-4 Set	162.1	405.9		568.0	62.9	630.9			
5 Set	35.5	8.7		44.2	22.1	66.3	8	1	
6 Set	51.7	73.5		125.2	25.2	150.4	8	3	
7 Set	51.7	84.0		135.7	12.1	147.8	7	2	
8 Set	38.5	66.1		104.6	17.5	122.1	7	2	
9 Set	0.9	63.2		64.1	8.8	72.9	1	3	
<b>TOTAL</b>	<b>2506.6</b>	<b>3601.3</b>		<b>6107.9</b>	<b>1210.7</b>	<b>7318.6</b>	<b>31</b>	<b>11</b>	



**Balance de la cuota de Merluza Julio 2019 - Junio 2020**



Estadísticas descriptivas de la estructura de tallas por subárea al 9 de setiembre de 2019

	A				B				C				D			
	Rango	Moda	Media	% < 28cm	Rango	Moda	Media	% < 28cm	Rango	Moda	Media	% < 28cm	Rango	Moda	Media	% < 28cm
3-Set					21 - 55	29	31	16.8	21 - 62	31	33	6.3	21 - 50	30	30.8	14.5
4-Set					20 - 44	28	29.1	28.4	22 - 58	32	32.8	6.6				
5-Set					22 - 57	30	31.1	8.4	20 - 57	30	31	11.1				
6-Set					25 - 53	30	31	11.6	21 - 60	30	31.6	10.1	22 - 53	30	31.1	16.5
7-Set					22 - 53	30	31.2	11.9	22 - 53	29	30.3	16.6				
8-Set					23 - 50	29	30.2	15.6	21 - 51	30	30.8	9.1				

Cifras preliminares.  
(\*) Talla Mínima Autorizada