

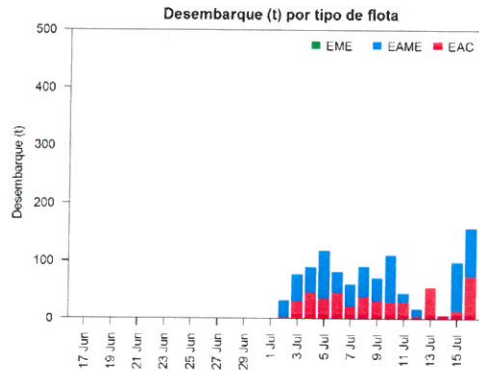
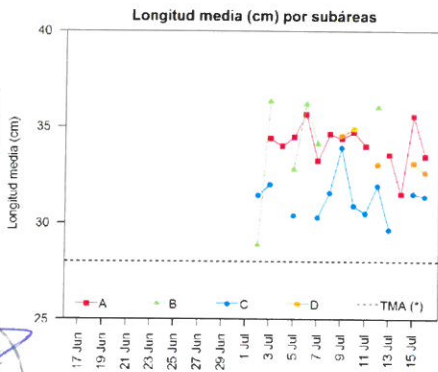
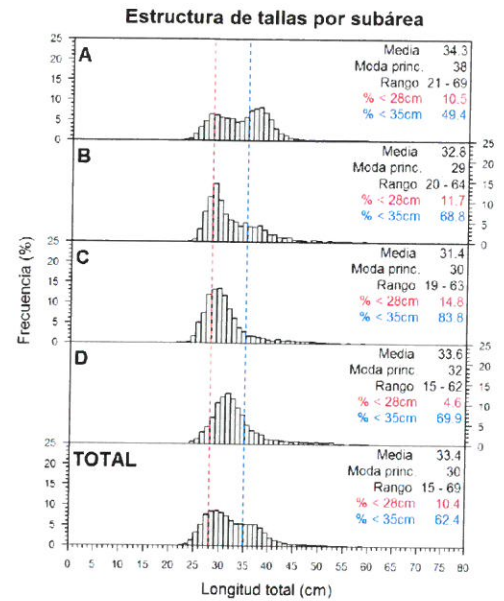
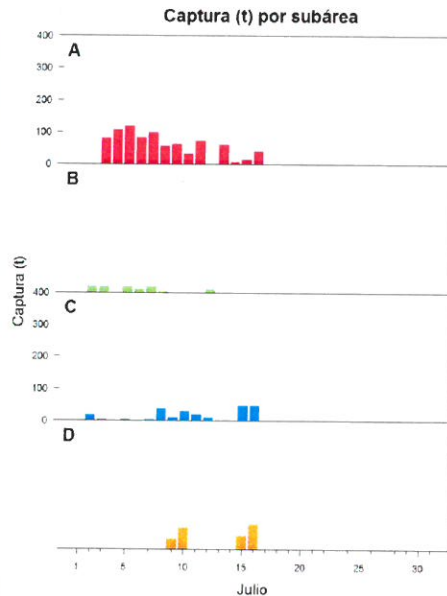
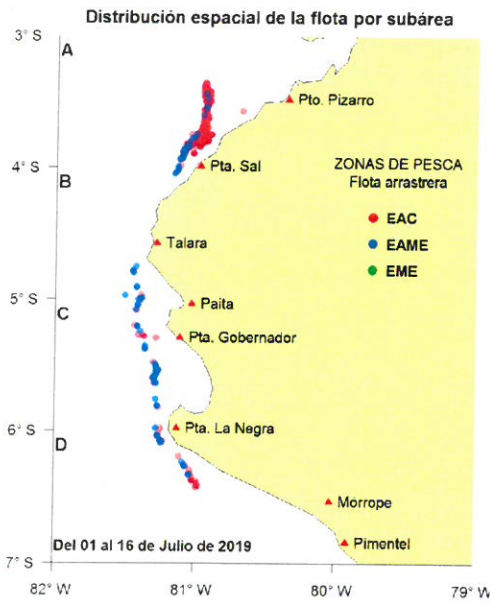


Reporte 1. Pesquería de Merluza

Al 16 de julio de 2019

Desembarque (t) de recursos demersales de la flota arrastrera

	INDUSTRIAL			TOTAL	OTROS	TOTAL	N° de embarcaciones		
	EAC	EAME	EME	merluza	demersales		EAC	EAME	EME
01-11 Jul	304.0	468.7		772.7	220.7	993.4			
12 Jul	4.5	12.9		17.4	3.5	20.9	2	1	
13 Jul	55.2			55.2	4.4	59.6	10		
14 Jul	6.5			6.5	0.8	7.3	1		
15 Jul	14.5	84.7		99.2	2.0	101.2	1	2	
16 Jul	73.6	84.1		157.7	4.3	162.0	6	2	
TOTAL	458.3	650.4		1108.7	235.7	1344.4	20	5	



Estadísticas descriptivas de la estructura de tallas por sub-área al 16 de julio de 2019

V. BLASKOVIC	A				B				C				D			
	Rango	Moda	Media	% < 28cm	Rango	Moda	Media	% < 28cm	Rango	Moda	Media	% < 28cm	Rango	Moda	Media	% < 28cm
10-Jul	23 - 56	38	34.7	8.8					19 - 59	30	30.9	12.9	15 - 59	32	34.9	2.5
11-Jul	24 - 54	38	34	10.4					22 - 54	29	30.5	14.9				
12-Jul					23 - 59	39	36	5.2	24 - 60	30	31.9	12.7	26 - 56	31	33.1	4
13-Jul	21 - 56	29	33.6	12.4					24 - 46	29	29.7	19.8				
14-Jul	23 - 43	29	31.5	24.3												
15-Jul	24 - 52	38	35.6	4.3					22 - 59	30	31.5	16.2	25 - 55	31	33.1	1.8
16-Jul	21 - 55	37	33.5	15.7					23 - 63	29	31.4	16.6	21 - 53	32	32.6	6

Cifras preliminares.

(*) Talla Máxima Autorizada