



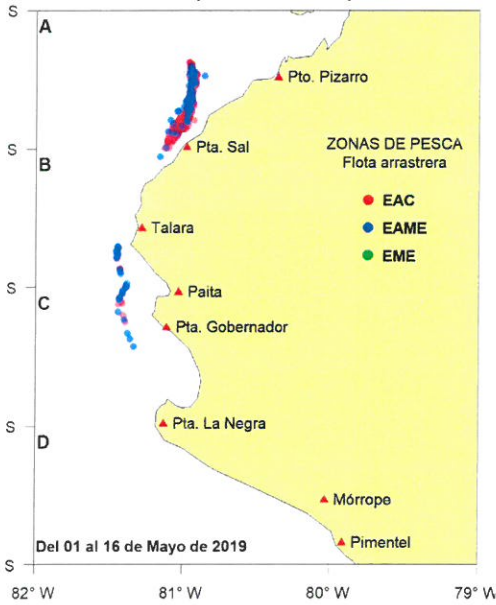
Reporte 1. Pesquería de Merluza

Al 16 de mayo de 2019

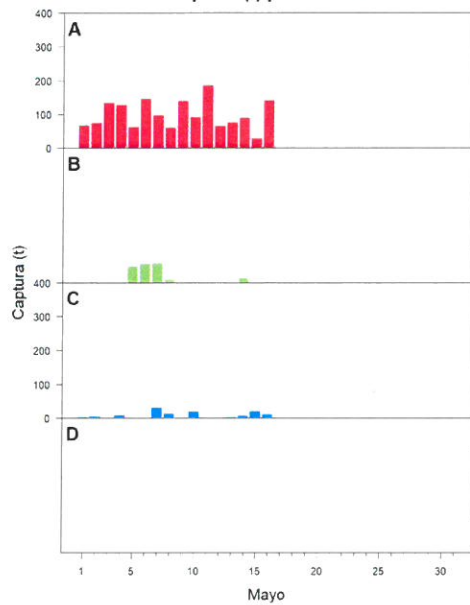
Desembarque (t) de recursos demersales de la flota arrastrera

	INDUSTRIAL			TOTAL	OTROS	TOTAL	Número embarcaciones		
	EAC	EAME	EME	merluza	demersales		EAC	EAME	EME
Jul. 2018	1403.3	1512.9	12.6	2928.8	231.0	3159.8			
Ago. 2018	1297.9	1662.8	12.8	2973.5	214.1	3187.6			
Set. 2018	181.1	122.2	2.3	305.6	155.3	460.9			
Oct. 2018	1574.1	1476.4	6.6	3057.1	277.7	3334.8			
Nov. 2018	831.1	1036	8.7	1875.8	716.0	2591.8			
Dic. 2018	1921.6	1545.7	51.9	3519.2	650.7	4169.9			
Ene. 2019	2669.6	2599.9	83.3	5352.8	140.4	5493.2			
Feb. 2019	1646.2	1681.7	24.9	3352.8	88.6	3441.4			
Mar. 2019	2225.1	1988	25.2	4238.3	158.8	4397.1			
Abr. 2019	1949.2	1604.4	0.8	3554.4	200.6	3755.0			
01-11 May	845.5	540.9		1386.4	32.3	1418.7			
12 May	62.0			62.0	2.3	64.3	5		
13 May	13.2	60.1		73.3	4.1	77.4	2	2	
14 May	86.2	15.6		101.8	2.6	104.4	7	1	
15 May	9.0	29		38.0	8.3	46.3	1	1	1
16 May	70.6	65.7		136.3	16.1	152.4	8	2	1
TOTAL	16785.7	15941.3	229.1	32956.1	2898.9	35855.0	23	6	2

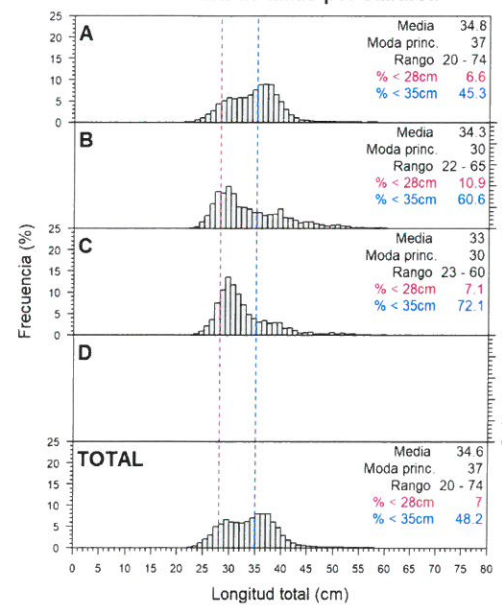
Distribución espacial de la flota por subárea



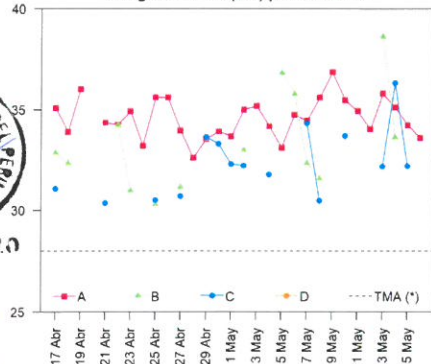
Captura (t) por subárea



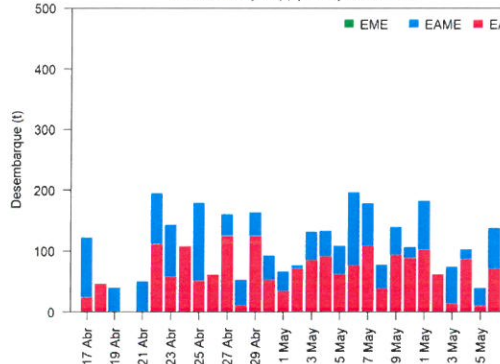
Estructura de tallas por subárea



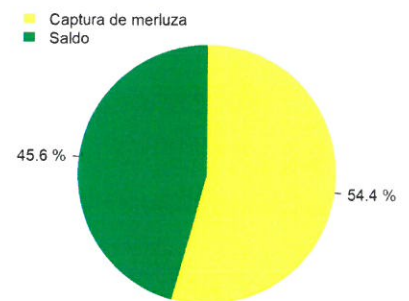
Longitud media (cm) por subáreas



Desembarque (t) por tipo de flota



Balace de la cuota de Merluza Julio 2018 - Junio 2019



Estadísticas descriptivas de la estructura de tallas por subárea al 16 de mayo de 2019

V. BLASKOVIC	A				B				C				D			
	Rango	Moda	Media	%<28cm	Rango	Moda	Media	%<28cm	Rango	Moda	Media	%<28cm	Rango	Moda	Media	%<28cm
10-May	22 - 56	37	35.5	3.7					25 - 57	31	33.7	5.3				
11-May	21 - 70	37	34.9	5.4												
12-May	23 - 61	36	34	6.9												
13-May	22 - 70	38	35.8	5.4	29 - 56	38	38.6	0	24 - 50	31	32.2	8.1				
14-May	22 - 60	37	35.1	6.5	25 - 59	27	33.6	19.3	26 - 57	31	36.3	2.9				
15-May	23 - 70	38	34.2	7.3					24 - 60	30	32.2	13.4				
16-May	20 - 66	36	33.6	9.9												

Cifras preliminares.

R. GUEVARA