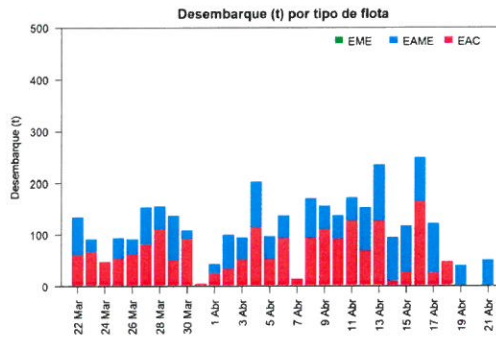
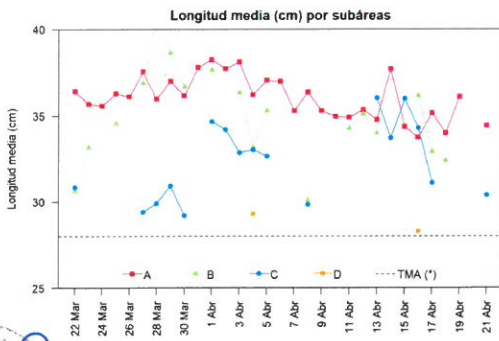
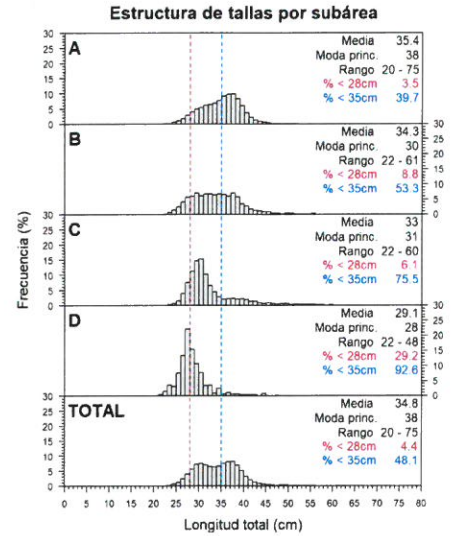
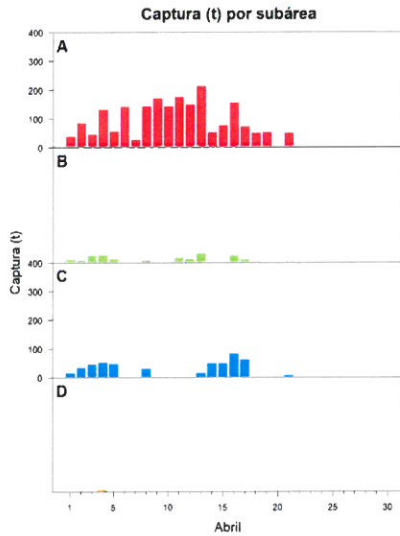
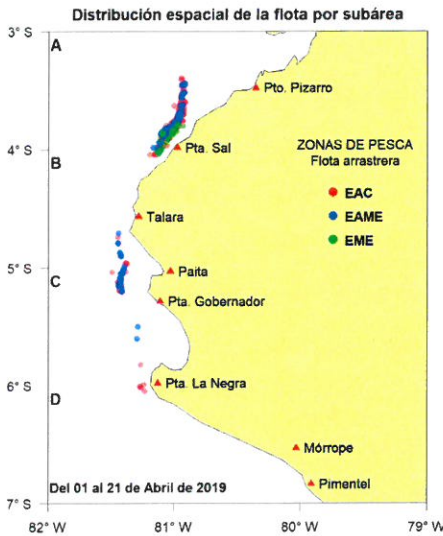




Reporte 1. Pesquería de Merluza
Al 21 de abril de 2019

Desembarque (t) de recursos demersales de la flota arrastrera

	INDUSTRIAL			TOTAL	OTROS	TOTAL	Número embarcaciones		
	EAC	EAME	EME	merluza	demersales		EAC	EAME	EME
Jul. 2018	1403.3	1512.9	12.6	2928.8	231	3159.8			
Ago. 2018	1297.9	1662.8	12.8	2973.5	214.1	3187.6			
Set. 2018	181.1	122.2	2.3	305.6	155.3	460.9			
Oct. 2018	1574.1	1476.4	6.6	3057.1	277.7	3334.8			
Nov. 2018	831.1	1036	8.7	1875.8	716	2591.8			
Dic. 2018	1921.6	1545.7	51.9	3519.2	650.7	4169.9			
Ene. 2019	2669.6	2599.9	83.3	5352.8	140.4	5493.2			
Feb. 2019	1646.2	1681.7	24.9	3352.8	88.6	3441.4			
Mar. 2019	2225.1	1988	25.2	4238.3	158.8	4397.1			
01-16 Abr	1182.7	968.1	0.6	2151.4	132.1	2283.5			
17 Abr	23.4	97.1	0.2	120.7	12.3	133	3	3	1
18 Abr	45.8			45.8	1.4	47.2	4		
19 Abr		38.6		38.6	10.6	49.2		1	1
20 Abr									
21 Abr		49.4		49.4	1.5	50.9		2	
TOTAL	15001.9	14778.8	229.1	30009.8	2790.5	32800.3	7	6	2



Estadísticas descriptivas de la estructura de tallas por subárea al 21 de abril de 2019

	A				B				C				D			
	Rango	Moda	Media	% < 28cm	Rango	Moda	Media	% < 28cm	Rango	Moda	Media	% < 28cm	Rango	Moda	Media	% < 28cm
15-Abr	23 - 54	37	34.3	8.2					26 - 60	30	35.9	3.6				
16-Abr	22 - 74	35	33.7	7.3	24 - 56	38	36.1	3.6	23 - 59	30	34.3	5.1	23 - 48	27	28.2	41.9
17-Abr	23 - 52	37	35.1	3	23 - 61	26	32.9	40.2	22 - 60	30	31.1	12.9				
18-Abr	23 - 59	33	33.9	4.8	25 - 45	32	32.3	9.8								
19-Abr	23 - 75	38	36.1	6.3												
21-Abr	22 - 59	31	34.4	4.8					25 - 47	30	30.4	12.3				

Cifras preliminares.
(*) Talla Mínima Autorizada

