

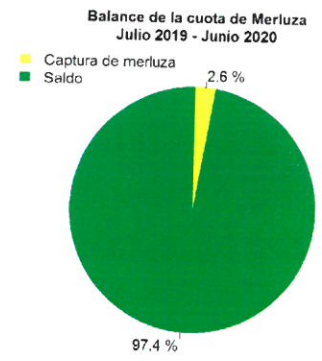
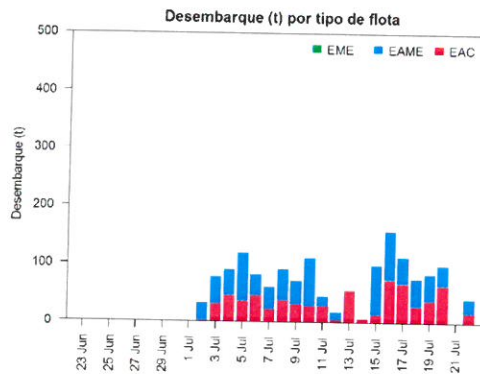
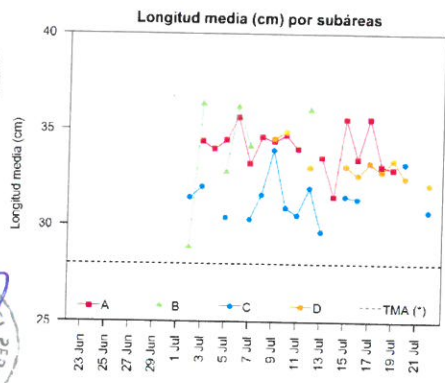
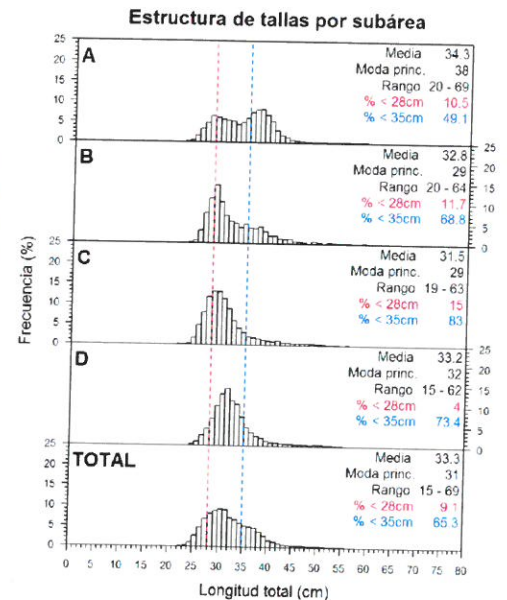
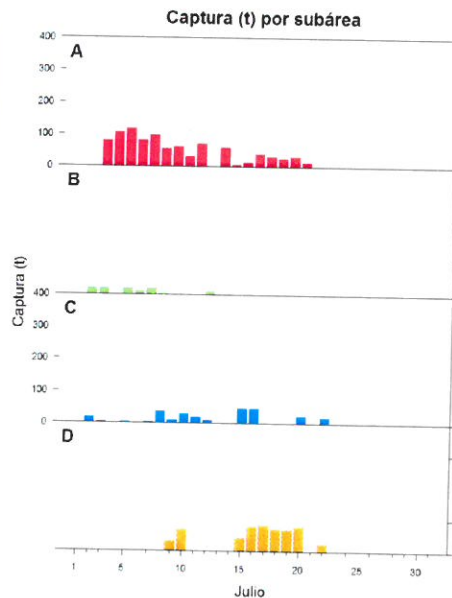
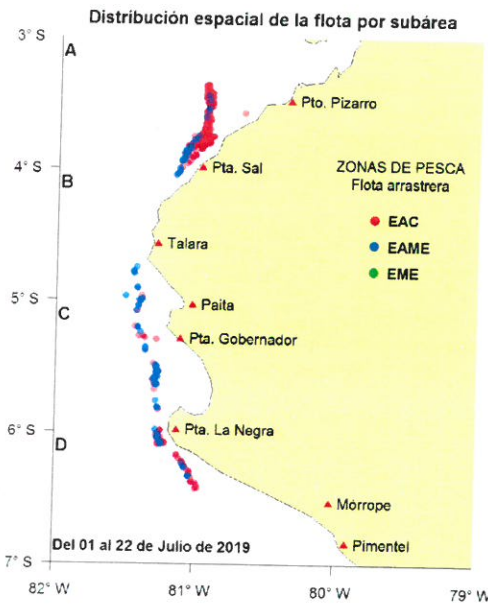


Reporte 1. Pesquería de Merluza

Al 22 de julio de 2019

Desembarque (t) de recursos demersales de la flota arrastrera

	INDUSTRIAL			TOTAL	OTROS	TOTAL	Número embarcaciones		
	EAC	EAME	EME	merluza	demersales		EAC	EAME	EME
01-17 Jul	524.8	696.2		1221	236.8	1457.8			
18 Jul	29.2	45.5		74.7	21.6	96.3	4	1	
19 Jul	37.9	44.9		82.8	13.7	96.5	6	1	
20 Jul	63.8	34.9		98.7	16.5	115.2	6	1	
21 Jul									
22 Jul	17.9	23.2		41.1	0.7	41.8	3	1	
TOTAL	673.6	844.7		1518.3	289.3	1807.6	19	4	



Estadísticas descriptivas de la estructura de tallas por subárea al 22 de julio de 2019

	A				B				C				D			
	Rango	Moda	Media	% < 28cm	Rango	Moda	Media	% < 28cm	Rango	Moda	Media	% < 28cm	Rango	Moda	Media	% < 28cm
16-Jul	21 - 55	37	33.5	15.7					23 - 63	29	31.4	16.6	21 - 53	32	32.6	6
17-Jul	22 - 61	36	35.6	4.3									25 - 54	32	33.3	2.9
18-Jul	21 - 45	37	33.1	16.8									21 - 58	32	32.9	3.6
19-Jul	20 - 56	28	33	16.8									25 - 56	32	33.4	2.3
20-Jul									22 - 56	32	33.3	12.6	24 - 56	32	32.5	4.1
22-Jul									21 - 52	29	30.7	19.1	22 - 50	32	32.1	8.1

Cifras preliminares.
(*) Talla Mínima Autorizada