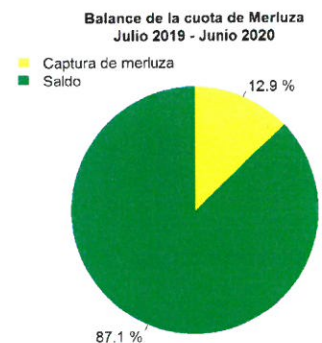
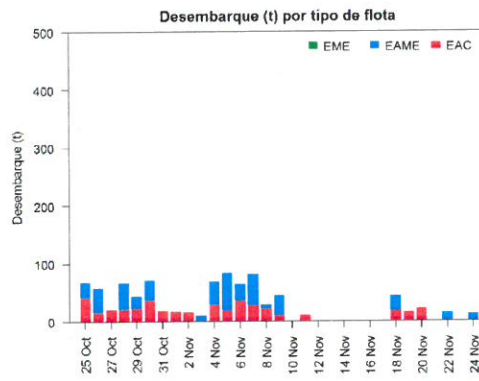
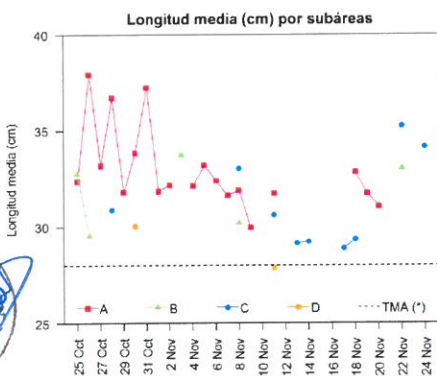
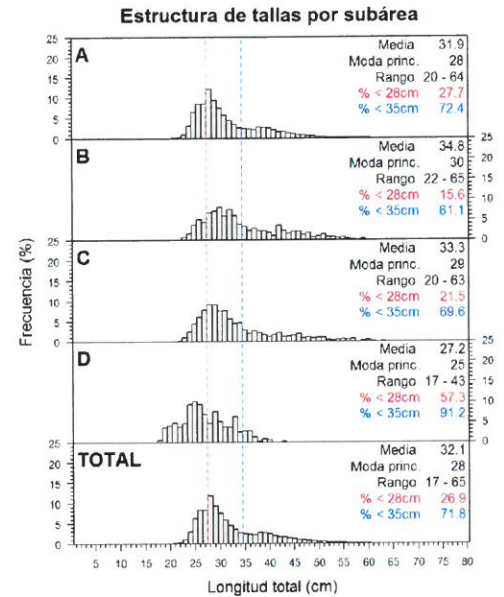
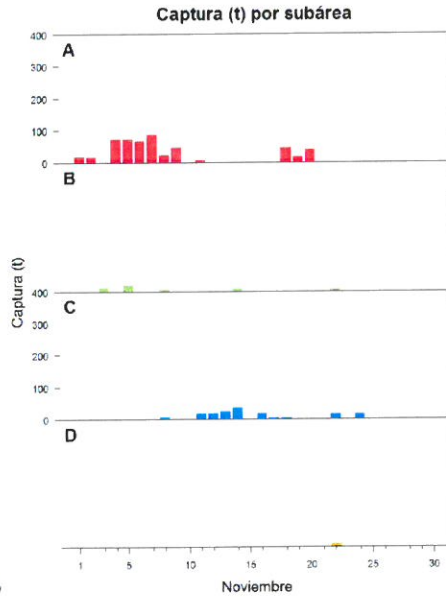
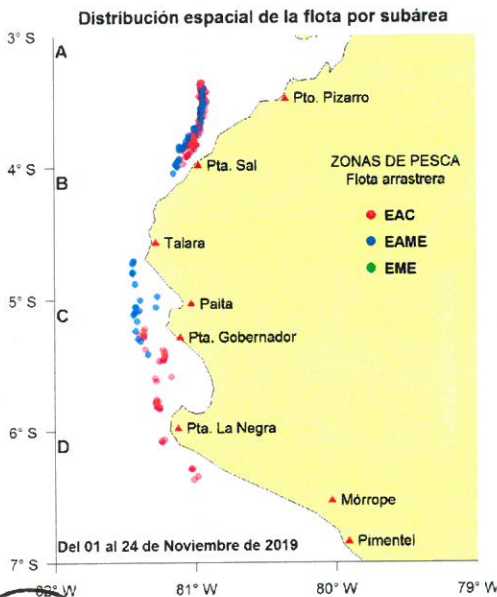




Reporte 1. Pesquería de Merluza
Al 24 de noviembre de 2019

Desembarque (t) de recursos demersales de la flota arrastrera

	INDUSTRIAL			TOTAL	OTROS	TOTAL	Número embarcaciones		
	EAC	EAME	EME	merluza	demersales		EAC	EAME	EME
jul 2019	989.8	1167.2		2157	333.8	2490.8			
ago 2019	1176.4	1732.7		2909.1	728.3	3637.4			
sep 2019	340.4	701.4		1041.8	148.6	1190.4			
oct 2019	502.9	456.7		959.6	293.9	1253.5			
01-19 Nov	212.7	262.1		474.8	129.9	604.7			
20 Nov	21.6			21.6	14.9	36.5	3		
21 Nov									
22 Nov	0.6	13		13.6	15.1	28.7	1	1	
23 Nov									
24 Nov		12		12	1.9	13.9	1	1	
TOTAL	3244.4	4345.1		7589.5	1666.4	9255.9	5	2	



Estadísticas descriptivas de la estructura de tallas por subárea al 24 de noviembre de 2019

	A				B				C				D			
	Rango	Moda	Media	% < 28cm	Rango	Moda	Media	% < 28cm	Rango	Moda	Media	% < 28cm	Rango	Moda	Media	% < 28cm
18-Nov	20 - 62	28	32.8	23.8					23 - 42	27	29.4	35.1				
19-Nov	20 - 58	26	31.8	37.3												
20-Nov	20 - 56	26	31	38.3												
22-Nov					23 - 62	32	33	15.8	23 - 63	29	35.2	16.7	17 - 30	22	21.9	98.7
24-Nov									23 - 61	28	34.1	19.9				

Cifras preliminares.

(*) Talla Mínima Autorizada