

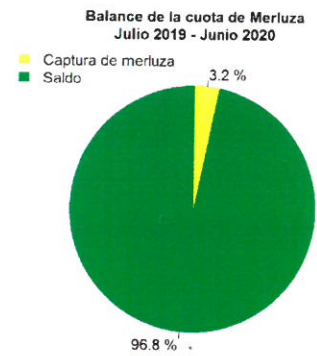
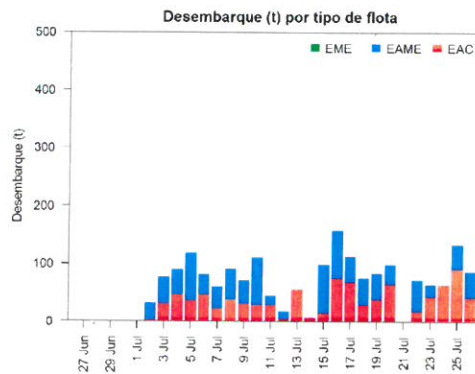
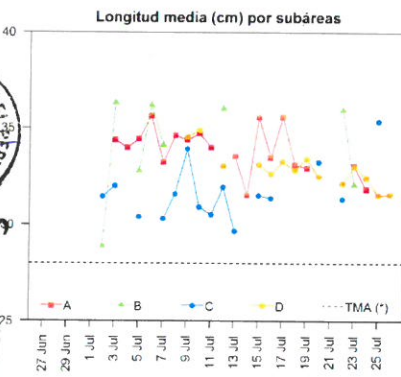
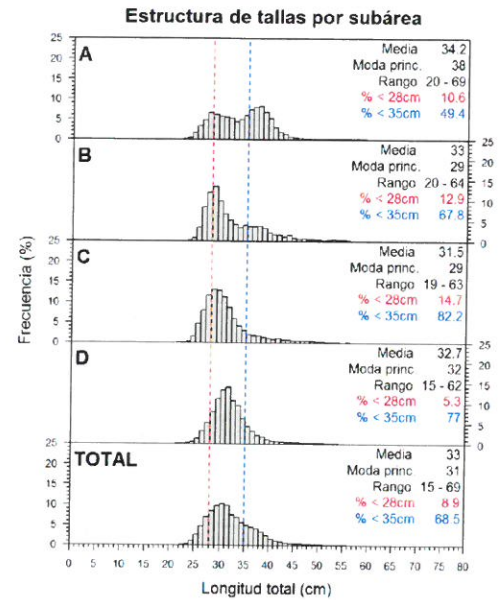
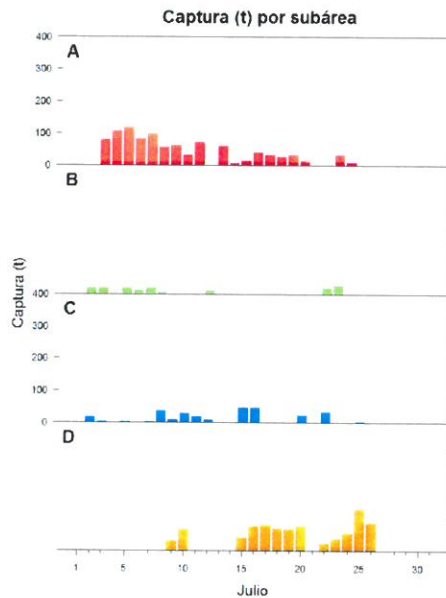
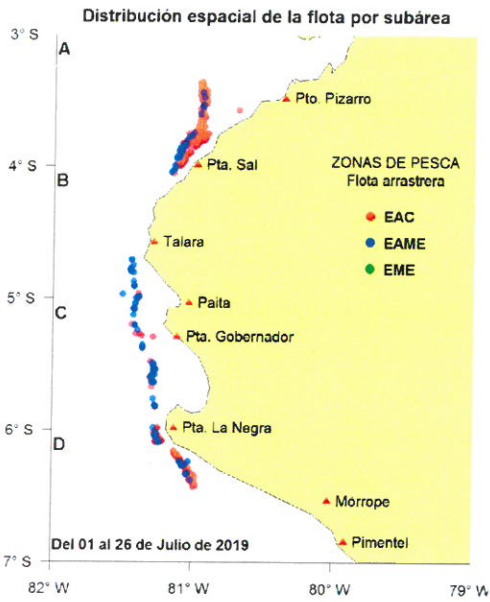


Reporte 1. Pesquería de Merluza

Al 26 de julio de 2019

Desembarque (t) de recursos demersales de la flota arrastrera

	INDUSTRIAL			TOTAL	OTROS	TOTAL	Número embarcaciones		
	EAC	EAME	EME	merluza	demersales		EAC	EAME	EME
01-21 Jul	655.6	821.5		1477.1	288.6	1765.7			
22 Jul	17.9	54.4		72.3	1.5	73.8	3	2	
23 Jul	42.4	22.3		64.7	29.2	93.9	4	1	
24 Jul	63.0			63.0	0.7	63.7	6		
25 Jul	90.8	42		132.8	0.9	133.7	5	1	
26 Jul	41.0	45.9		86.9	0.8	87.7	5	1	
TOTAL	910.7	986.1		1896.8	321.7	2218.5	23	5	



Estadísticas descriptivas de la estructura de tallas por subárea al 26 de julio de 2019

	A				B				C				D			
	Rango	Moda	Media	% < 28cm	Rango	Moda	Media	% < 28cm	Rango	Moda	Media	% < 28cm	Rango	Moda	Media	% < 28cm
20-Jul																
22-Jul					25 - 60	28	35.9	13.3	22 - 56	32	33.3	12.6	24 - 56	32	32.5	4.1
23-Jul	24 - 44	37	33.1	12.5	24 - 58	28	32.1	17.7	21 - 56	29	31.3	16.1	22 - 50	32	32.1	8.1
24-Jul	21 - 48	28	31.9	18.1									22 - 56	32	33	4.3
25-Jul													20 - 45	32	32.4	5.6
26-Jul									26 - 55	32	35.4	4.6	22 - 56	31	31.5	8.4
													20 - 48	31	31.6	7.1

Cifras preliminares.

(*) Talla Mínima Autorizada