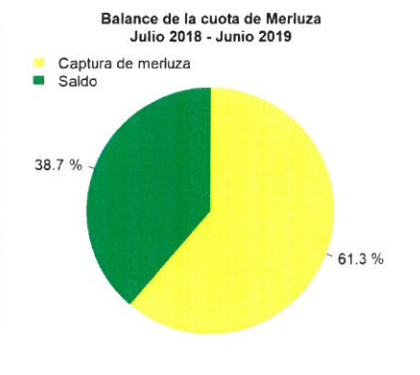
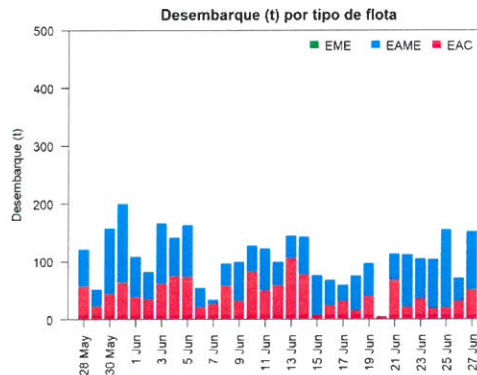
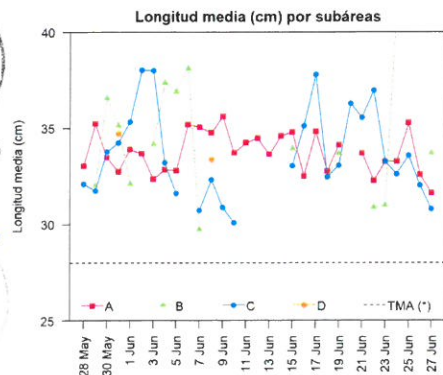
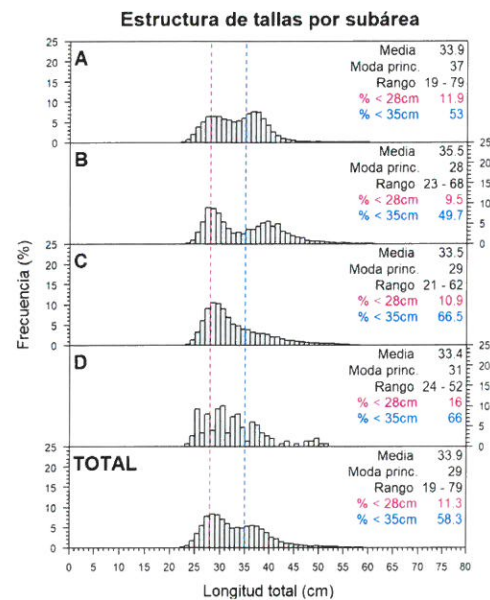
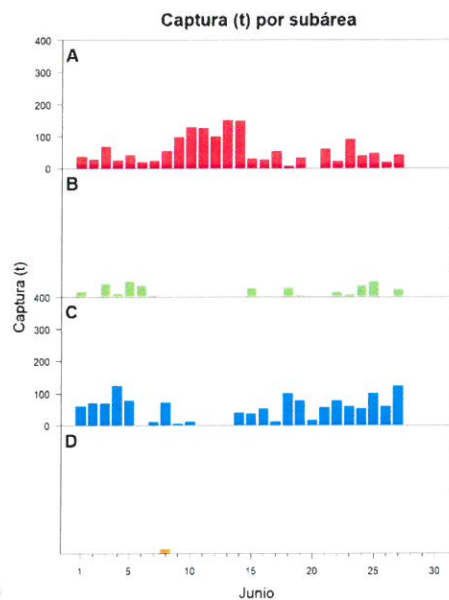
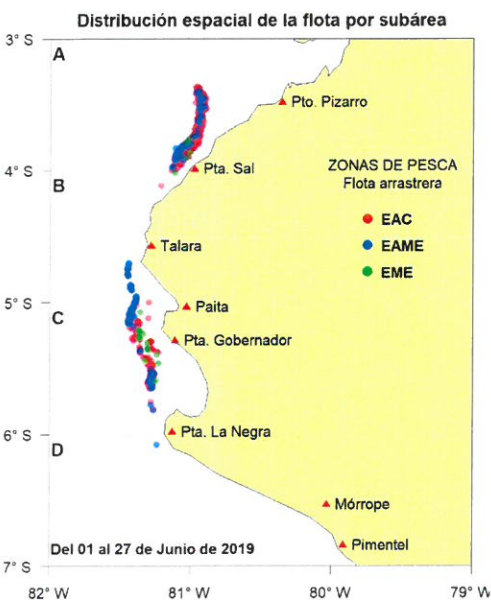




Desembarque (t) de recursos demersales de la flota arrastrera

	INDUSTRIAL			TOTAL	OTROS	TOTAL	Número embarcaciones		
	EAC	EAME	EME	merluza	demersales		EAC	EAME	EME
Jul. 2018	1403.3	1512.9	12.6	2928.8	231.0	3159.8			
Ago. 2018	1297.9	1662.8	12.8	2973.5	214.1	3187.6			
Set. 2018	181.1	122.2	2.3	305.6	155.3	460.9			
Oct. 2018	1574.1	1476.4	6.6	3057.1	277.7	3334.8			
Nov. 2018	831.1	1036.0	8.7	1875.8	716.0	2591.8			
Dic. 2018	1921.6	1545.7	51.9	3519.2	650.7	4169.9			
Ene. 2019	2669.6	2599.9	83.3	5352.8	140.4	5493.2			
Feb. 2019	1646.2	1681.7	24.9	3352.8	88.6	3441.4			
Mar. 2019	2225.1	1988.0	25.2	4238.3	158.8	4397.1			
Abr. 2019	1949.2	1604.4	0.8	3554.4	200.6	3755.0			
May. 2019	1810.5	1421.6	0.3	3232.4	250.9	3483.3			
01-22 Jun	996.2	1175.4	1.6	2173.2	282.5	2455.7			
23 Jun	35.2	69.3		104.5	49.5	154.0	6	2	
24 Jun	18.5	84.6		103.1	21.0	124.1	3	2	
25 Jun	20.4	134.0		154.4	38.1	192.5	5	3	
26 Jun	30.8	39.1		69.9	6.9	76.8	3	1	
27 Jun	50.7	100.1		150.8	37.2	188.0	7	3	
TOTAL	18661.5	18254.1	231	37146.6	3519.3	40665.9	24	11	



Estadísticas descriptivas de la estructura de tallas por subárea al 27 de junio de 2019

	A				B				C				D			
	Rango	Moda	Media	% < 28cm	Rango	Moda	Media	% < 28cm	Rango	Moda	Media	% < 28cm	Rango	Moda	Media	% < 28cm
21-Jun	22 - 50	38	33.7	12.8	26 - 56	29	30.9	8.5	25 - 62	29	35.5	6				
22-Jun	22 - 62	28	32.3	20.8	24 - 52	28	31	21.5	25 - 56	31	37	2.4				
23-Jun	22 - 69	28	33.3	18	24 - 52	28	31	21.5	25 - 56	29	33.3	11.5				
24-Jun	22 - 54	37	33.3	15.8	28 - 60	42	41.3	0	24 - 60	29	32.6	11.5				
25-Jun	19 - 58	37	35.3	10.2	25 - 58	39	40.5	1.6	24 - 62	31	33.6	11.5				
26-Jun	22 - 56	27	32.6	18.9					22 - 57	30	32	15.9				
27-Jun	22 - 68	28	31.6	16.1	24 - 61	28	33.7	13.2	22 - 55	28	30.8	17.5				

Cifras preliminares.

(*) Talla Mínima Autorizada