



Reporte 1. Pesquería de Merluza

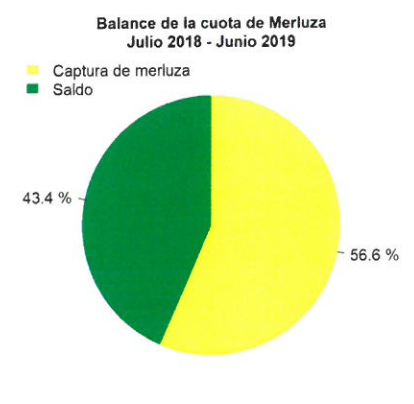
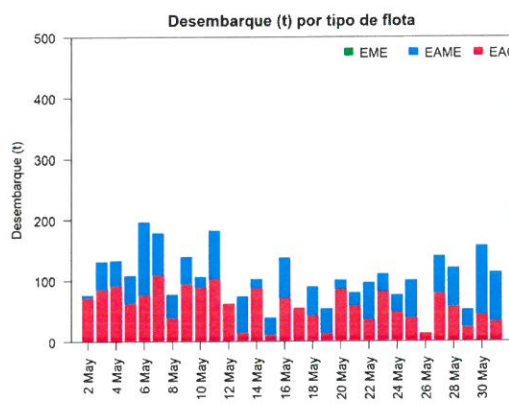
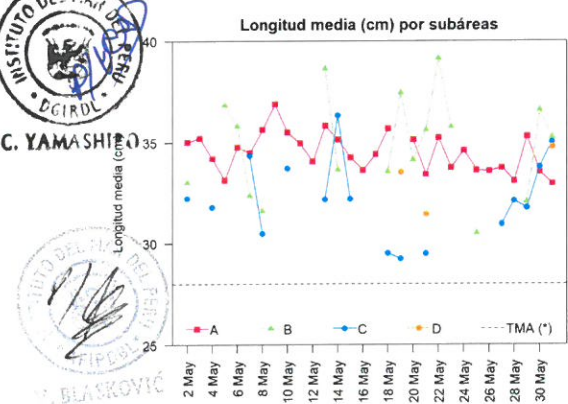
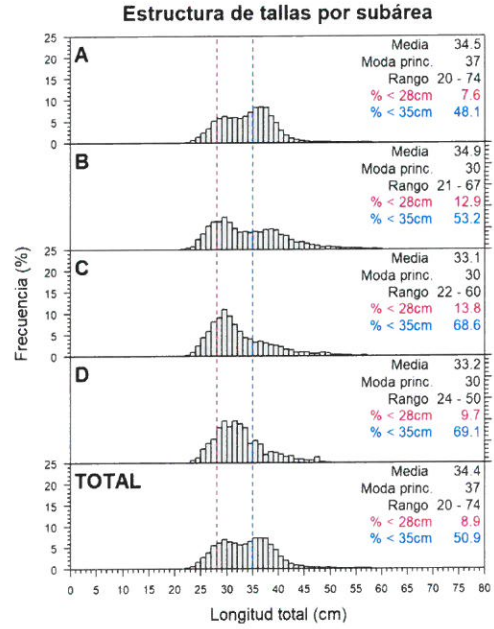
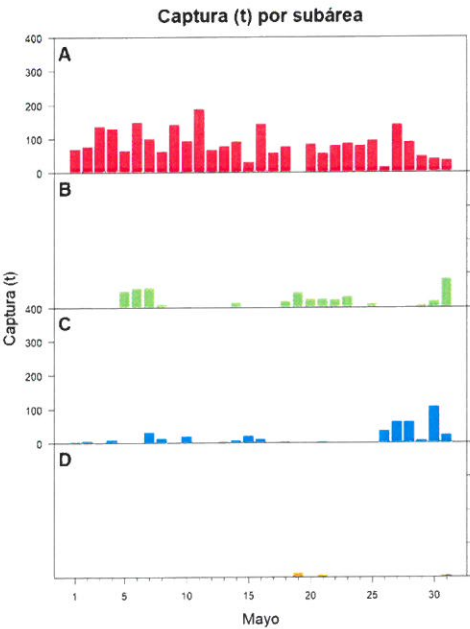
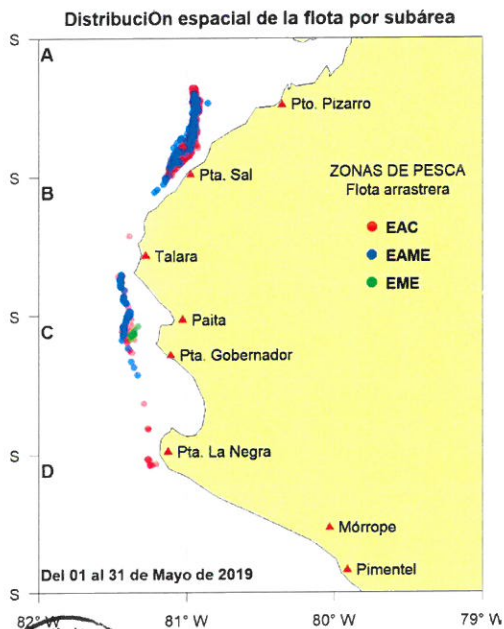
Al 31 de mayo de 2019

Desembarque (t) de recursos demersales de la flota arrastrera

	INDUSTRIAL			TOTAL	OTROS	TOTAL	Número embarcaciones		
	EAC	EAME	EME	merluza	demersales		EAC	EAME	EME
Jul. 2018	1403.3	1512.9	12.6	2928.8	231.0	3159.8			
Ago. 2018	1297.9	1662.8	12.8	2973.5	214.1	3187.6			
Set. 2018	181.1	122.2	2.3	305.6	155.3	460.9			
Oct. 2018	1574.1	1476.4	6.6	3057.1	277.7	3334.8			
Nov. 2018	831.1	1036.0	8.7	1875.8	716.0	2591.8			
Dic. 2018	1921.6	1545.7	51.9	3519.2	650.7	4169.9			
Ene. 2019	2669.6	2599.9	83.3	5352.8	140.4	5493.2			
Feb. 2019	1646.2	1681.7	24.9	3352.8	88.6	3441.4			
Mar. 2019	2225.1	1988.0	25.2	4238.3	158.8	4397.1			
Abr. 2019	1949.2	1604.4	0.8	3554.4	200.6	3755.0			
01-26 May	1547.5	1019.9	0.2	2567.6	121.5	2689.1			
27 May	77.2	61.5	0.1	138.8	61.0	199.8	9	2	1
28 May	56.6	63.4		120.0	27.3	147.3	9	2	
29 May	22.6	28.5		51.1	1.6	52.7	6	1	
30 May	43.3	112.8		156.1	2.4	158.5	4	2	
31 May	31.5	81.6		113.1	26.9	140.0	3	2	
TOTAL	17477.9	16597.7	229.4	34305.0	3073.9	37378.9	31	9	1



R. GUEVARA



Estadísticas descriptivas de la estructura de tallas por subárea al 31 de mayo de 2019

	A				B				C				D			
	Rango	Moda	Media	%<28cm	Rango	Moda	Media	%<28cm	Rango	Moda	Media	%<28cm	Rango	Moda	Media	%<28cm
25-May	22 - 68	30	33.6	11.4	24 - 50	29	30.5	33.3								
26-May	23 - 55	36	33.6	13.3					24 - 59	28	30.9	20.6				
27-May	22 - 68	37	33.7	12.2					23 - 57	30	32.1	23.3				
28-May	22 - 66	37	33.1	14.7					24 - 51	30	31.7	13.9				
29-May	23 - 74	35	35.3	6.2	21 - 51	28	32	15.4	23 - 60	30	33.8	14.4				
30-May	24 - 58	31	33.5	8.9	24 - 61	38	36.6	9.1	22 - 57	34	35	10.1	24 - 50	32	34.7	4.7
31-May	23 - 51	36	32.9	12.7												

Cifras preliminares.