

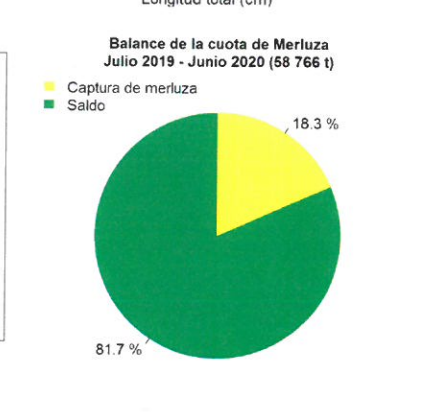
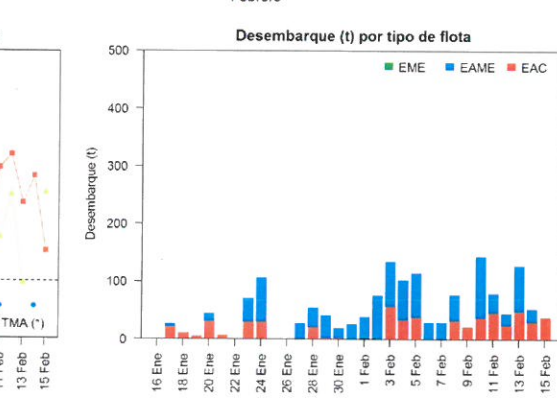
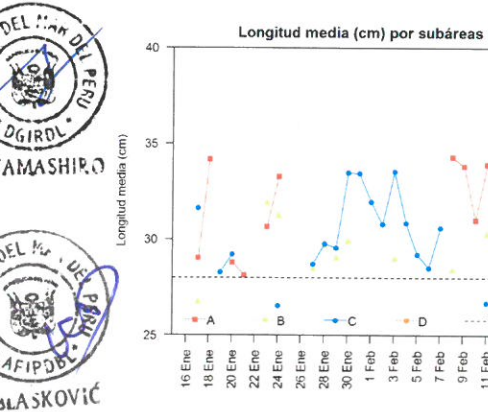
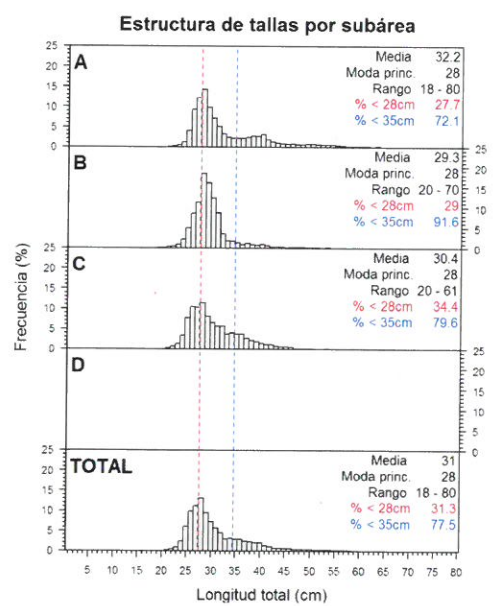
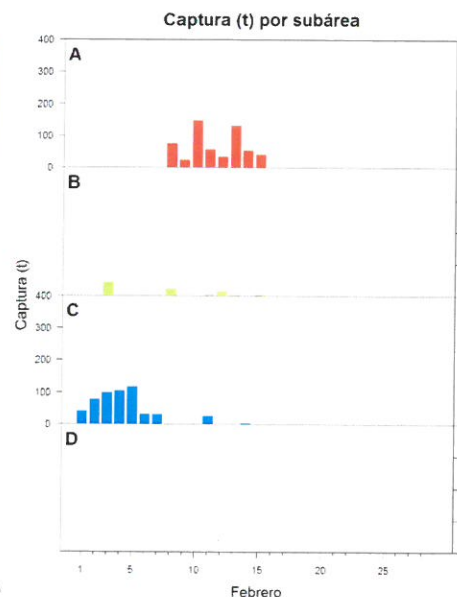
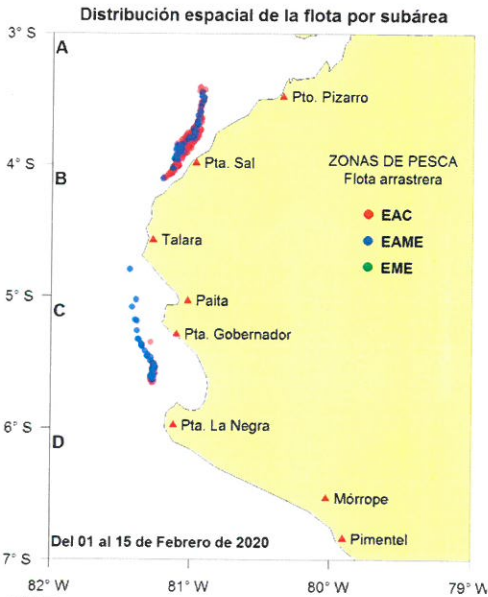


Reporte 1. Pesquería de Merluza

Al 15 de febrero de 2020

Desembarque (t) de recursos demersales de la flota arrastrera

	INDUSTRIAL			TOTAL	OTROS	TOTAL	Número embarcaciones		
	EAC	EAME	EME	merluza	demersales		EAC	EAME	EME
jul 2019	989.8	1167.2		2157.0	333.8	2490.8			
ago 2019	1176.4	1732.7		2909.1	728.3	3637.4			
sep 2019	340.4	701.4		1041.8	148.6	1190.4			
oct 2019	502.9	456.7		959.6	293.9	1253.5			
nov 2019	264.8	368.2		633.0	180.3	813.3			
dic 2019	364.1	915.5		1279.6	124.8	1404.4			
ene 2020	257.7	423.7		681.4	60.5	741.9			
01-10 Feb	219.7	553.6		773.3	30.5	803.8			
11 Feb	46.3	33.6		79.9	1.9	81.8	4	1	
12 Feb	23.5	22.1		45.6	1.4	47.0	2	1	
13 Feb	48.3	79.8		128.1	5.9	134.0	5	2	
14 Feb	29.9	23.9		53.8	2.1	55.9	2	2	
15 Feb	38.6			38.6	3.3	41.9	5		
<b>TOTAL</b>	<b>4302.4</b>	<b>6478.4</b>		<b>10780.8</b>	<b>1915.3</b>	<b>12696.1</b>	<b>18</b>	<b>6</b>	



Estadísticas descriptivas de la estructura de tallas por subárea al 15 de febrero de 2020

	A				B				C				D			
	Rango	Moda	Media	%<28cm	Rango	Moda	Media	%<28cm	Rango	Moda	Media	%<28cm	Rango	Moda	Media	%<28cm
9-Feb	23 - 68	28	33.8	23												
10-Feb	21 - 80	28	31	32.2												
11-Feb	21 - 70	27	33.9	24	25 - 43	28	30.3	27.3	20 - 46	26	26.7	71.2				
12-Feb	22 - 64	28	31.6	15.7	21 - 55	28	32.5	10.7								
13-Feb	20 - 70	28	32.1	29.3	24 - 38	28	27.9	40.8								
14-Feb	22 - 76	28	33.5	18.9					22 - 44	26	26.7	75.1				
15-Feb	18 - 63	28	29.6	38.4	22 - 60	28	32.6	16.8								

Cifras preliminares  
(\*) Talla Mínima Autorizada