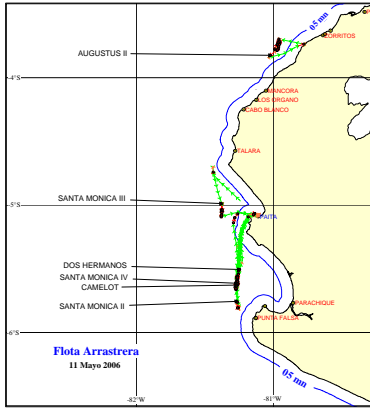




11 DE MAYO 2006

ZONAS DE PESCA DE MERLUZA

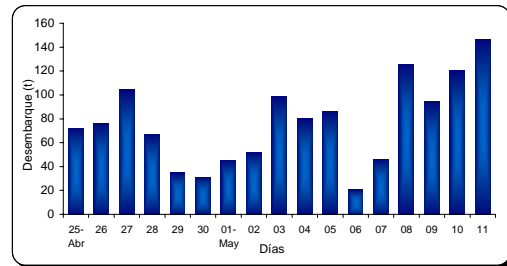


DESEMBARQUE (t) DE RECURSOS DEMERSALES DE LA FLOTA INDUSTRIAL

DIA	MERLUZA	OTROS DEMERSALES	TOTAL
01 - 15 Ene	583.4	125.2	708.6
16 - 31 Ene	1194.9	109.8	1304.7
01 - 15 Feb	1446.5	170.3	1616.8
16 - 28 Feb	898.7	120.3	1019.0
01 - 15 Mar	726.0	143.2	869.2
16 - 31 Mar	1019.6	127.0	1146.5
01 - 15 Abr	315.4	47.0	362.4
16 - 31 Abr	779.9	100.9	880.7
01 - May	45.3	4.7	50.1
02 - May	51.9	16.6	68.6
03 - May	99.0	6.1	105.1
04 - May	79.8	10.8	90.6
05 - May	86.2	17.7	103.9
06 - May	20.8	6.2	27.0
07 - May	45.9	1.4	47.2
08 - May	125.3	6.1	131.4
09 - May	94.8	9.1	103.9
10 - May	120.2	12.7	132.8
11 - May	146.3	9.6	155.9
TOTAL	7879.7	1044.8	8924.6
%	88.3	11.7	100.0

DESEMBARQUE (t) DE MERLUZA POR TIPO DE FLOTA

DIA	INDUSTRIAL			TOTAL
	EAC	EAME	EME	
01 - 15 Ene	248.0	335.4		583.4
16 - 31 Ene	641.6	553.3		1194.9
01 - 15 Feb	827.0	619.5		1446.5
16 - 28 Feb	438.6	459.0	1.1	898.7
01 - 15 Mar	226.0	498.0		726.0
16 - 31 Mar	353.8	665.8		1019.6
01 - 15 Abr		308.5	6.8	315.4
16 - 31 Abr	244.2	532.7	3.0	779.9
01 - May	13.9	31.4		45.3
02 - May	4.3	45.3	2.3	51.9
03 - May	62.2	35.4	1.4	99.0
04 - May	1.7	78.1		79.8
05 - May	29.7	56.5		86.2
06 - May	5.1	10.5	5.2	20.8
07 - May	5.6	40.3		45.9
08 - May	16.2	104.8	4.3	125.3
09 - May	27.8	60.7	6.2	94.8
10 - May	42.0	78.1		120.2
11 - May	44.9	97.0	4.4	146.3
TOTAL	3234.6	4610.4	34.7	7879.7
%	41.1	58.5	0.4	100.0

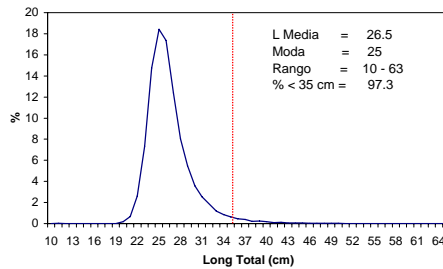


NUMERO DE EMBARCACIONES

DIA	EAC	EAME
01 - May	2	2
02 - May	3	3
03 - May	4	3
04 - May	5	3
05 - May	4	3
06 - May	3	2
07 - May	1	1
08 - May	2	3
09 - May	3	2
10 - May	5	3
11 - May	5	3

DIA	EAC				EAME			
	RANGO	MODA	L.MEDIA	% < DE 35 cm	RANGO	MODA	L.MEDIA	% < DE 35 cm
01 - May	20 - 41	25	26.3	97.8	10 - 54	25,32	27.8	93.3
02 - May	21 - 49	28,34	30.4	81.5	20 - 57	26,31	29.5	85.5
03 - May	21 - 41	25	25.7	99.3	20 - 57	25,31	29.2	86.3
04 - May	20 - 48	25	26.3	98.5	20 - 51	25	26.1	98.3
05 - May	20 - 40	25	25.6	99.5	20 - 44	25,30	26.0	98.6
06 - May	20 - 50	28	30.4	80.4	10 - 63	26	27.5	89.7
07 - May	20 - 44	25,31	25.7	98.6	20 - 37	25	26.1	99.8
08 - May	20 - 56	25	26.0	97.7	20 - 43	26	26.0	99.2
09 - May	20 - 47	25	26.1	97.2	21 - 42	26,29	26.4	99.0
10 - May	20 - 52	25	26.4	97.6	21 - 49	25	26.2	97.7
11 - May	20 - 50	26	26.2	98.2	18 - 46	26	26.2	99.1

ESTRUCTURA POR TAMAÑOS DE MERLUZA
01 - 11 DE MAYO DEL 2006



* Cifras preliminares, no oficiales