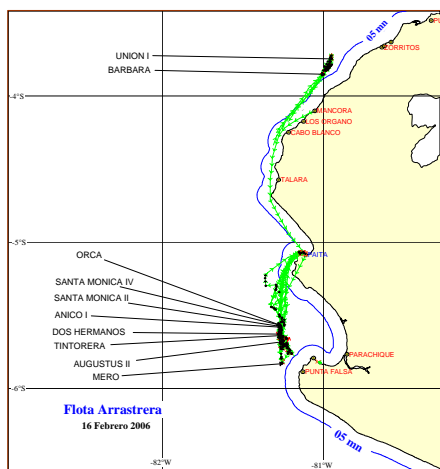




16 DE FEBRERO 2006

ZONAS DE PESCA DE MERLUZA

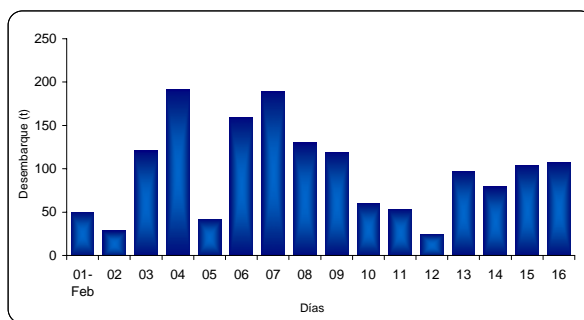


DESEMBARQUE (t) DE RECURSOS DEMERSALES DE LA FLOTA INDUSTRIAL

DIA	MERLUZA	OTROS DEMERSALES	TOTAL
01 - 15 Ene	583.4	125.2	708.6
16 - 31 Ene	1194.9	109.8	1304.7
01 - Feb	49.5	9.8	59.2
02 - Feb	28.3	20.7	49.0
03 - Feb	120.9	7.6	128.4
04 - Feb	191.9	11.5	203.4
05 - Feb	41.2	11.0	52.2
06 - Feb	159.3	8.6	167.9
07 - Feb	189.5	15.2	204.7
08 - Feb	129.9	12.8	142.7
09 - Feb	118.8	8.8	127.7
10 - Feb	59.8	13.1	72.9
11 - Feb	53.0	8.0	61.0
12 - Feb	24.4	4.0	28.3
13 - Feb	97.1	22.3	119.4
14 - Feb	79.1	6.1	85.2
15 - Feb	103.9	10.8	114.7
16 - Feb	107.6	12.2	119.7
TOTAL	3332.4	417.5	3749.9
%	88.9	11.1	100.0

DESEMBARQUE (t) DE MERLUZA POR TIPO DE FLOTA

DIA	INDUSTRIAL			TOTAL
	EAC	EAME	EME	
01 - 15 Ene	248.0	335.4		583.4
16 - 31 Ene	641.6	553.3		1194.9
01 - Feb	23.0	26.4		49.5
02 - Feb	10.8	17.4		28.3
03 - Feb	65.7	55.1		120.9
04 - Feb	100.3	91.6		191.9
05 - Feb	41.2	0.0		41.2
06 - Feb	84.5	74.8		159.3
07 - Feb	120.9	68.6		189.5
08 - Feb	119.8	10.1		129.9
09 - Feb	42.2	76.6		118.8
10 - Feb	14.7	45.1		59.8
11 - Feb	13.3	39.8		53.0
12 - Feb	24.4	0.0		24.4
13 - Feb	54.4	42.7		97.1
14 - Feb	37.1	42.0		79.1
15 - Feb	74.7	29.2		103.9
16 - Feb	56.8	50.8		107.6
TOTAL	1773.4	1559.0	0.0	3332.4
%	53.2	46.8	0.0	100.0

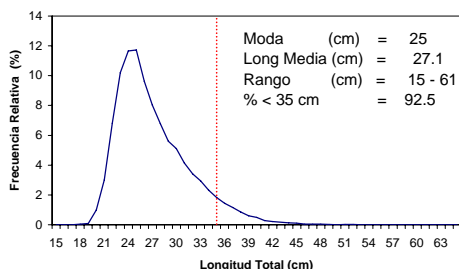


NUMERO DE EMBARCACIONES

DIA	EAC	EAME
01 - Feb	3	2
02 - Feb	4	2
03 - Feb	5	2
04 - Feb	9	3
05 - Feb	4	
06 - Feb	6	2
07 - Feb	10	3
08 - Feb	9	2
09 - Feb	8	3
10 - Feb	5	2
11 - Feb	2	2
12 - Feb	3	
13 - Feb	8	3
14 - Feb	5	2
15 - Feb	7	1
16 - Feb	6	2

DIA	EAC				EAME			
	RANGO	MODA	L.MEDIA	% < DE 35 cm	RANGO	MODA	L.MEDIA	% < DE 35 cm
01 - Feb	19 - 53	23, 31	26.3	92.5	19 - 59	26, 29	28.3	87.6
02 - Feb	16 - 52	23, 33	26.0	93.1	18 - 53	30, 28	28.9	86.9
03 - Feb	19 - 46	24, 27	26.8	93.8	19 - 51	24, 26	27.4	91.4
04 - Feb	19 - 50	25, 29	28.8	86.8	19 - 50	25, 30	26.4	94.4
05 - Feb	19 - 46	24, 30	26.0	96.6				
06 - Feb	19 - 57	26, 32	29.0	86.7	19 - 46	23, 31	25.2	98.2
07 - Feb	19 - 46	25, 28	26.9	95.1	19 - 54	24, 29	29.7	78.1
08 - Feb	18 - 58	25	26.9	95.4	20 - 54	23,30	28.3	85.8
09 - Feb	19 - 57	25	27.1	93.2	18 - 51	25,29	26.6	95.3
10 - Feb	20 - 50	23, 28	26.5	96.3	20 - 54	23, 29	27.9	90.8
11 - Feb	18 - 50	23, 26	25.6	93.5	20 - 46	23,26,29	25.7	95.9
12 - Feb	19 - 52	24, 29	26.9	93.6				
13 - Feb	17 - 57	24, 30	27.9	89.2	18 - 57	23, 31	25.9	94.9
14 - Feb	19 - 61	32, 29, 23	29.8	81.7	18 - 50	25, 28	26.9	91.7
15 - Feb	18 - 52	24	27.7	91.3	18 - 38	24, 27	26.8	96.1
16 - Feb	19 - 56	25, 30	27.6	91.9	15 - 52	23, 30	26.3	94.6

ESTRUCTURA POR TAMAÑOS DE MERLUZA
01 - 16 DE FEBRERO DEL 2006



* Cifras preliminares, no oficiales