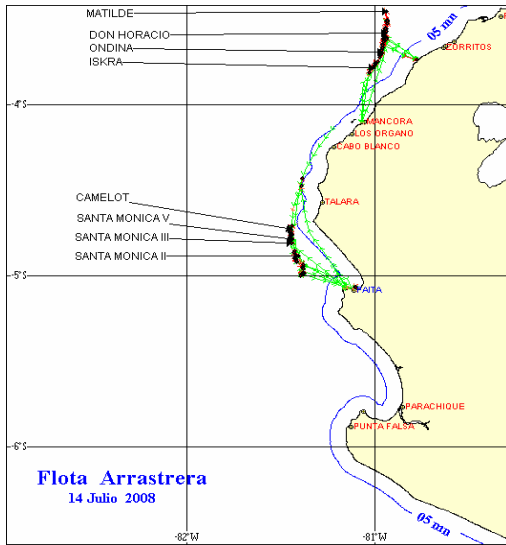




13 DE JULIO 2008

ZONAS DE PESCA DE MERLUZA

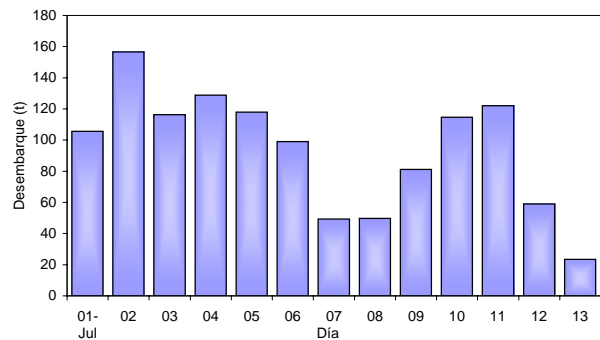


DESEMBARQUE (t) DE RECURSOS DEMERSALES DE LA FLOTA INDUSTRIAL

DIA	MERLUZA	OTROS DEMERSALES	TOTAL
01 al 15 Ene	1004.5	38.3	1042.8
16 al 31 Ene	1362.6	45.9	1408.4
01 al 15 Feb	1163.7	43.1	1206.8
16 al 23 Feb	815.7	29.5	845.2
01 al 30 Mar	0.0	0.0	0.0
01 al 15 Abr	0.0	0.0	0.0
16 al 30 Abr	1231.4	68.5	1299.9
01 al 15 May	1075.0	61.3	1136.3
16 - 31 Mayo	1654.4	87.2	1741.6
01 - 15 Junio	1212.0	55.2	1267.2
16 - 30 Jun	1145.2	55.6	1200.9
01-Jul	105.7	5.0	110.7
02-Jul	156.6	6.2	162.9
03-Jul	116.3	5.9	122.2
04-Jul	128.7	13.2	141.9
05-Jul	117.9	4.6	122.5
06-Jul	98.9	3.5	102.4
07-Jul	49.4	2.9	52.3
08-Jul	49.6	1.4	51.1
09-Jul	81.1	4.3	85.4
10-Jul	114.6	6.4	121.0
11-Jul	122.0	5.0	126.9
12-Jul	59.0	2.8	61.9
13-Jul	23.4	2.0	25.4
<b>TOTAL</b>	<b>11887.9</b>	<b>547.8</b>	<b>12435.7</b>
%	95.6	4.4	100.0

DESEMBARQUE (t) DE MERLUZA POR TIPO DE FLOTA

DIA	INDUSTRIAL			TOTAL
	EAC	EAME	EME	
01 al 15 Ene	565.7	438.8		1004.5
16 al 31 Ene	536.3	826.3		1362.6
01 al 15 Feb	528.8	634.9		1163.7
16 al 23 Feb	519.3	296.4		815.7
01 al 30 Mar	0.0	0.0		0.0
01 al 15 Abr	0.0	0.0		0.0
16 al 30 Abr	699.8	531.5		1231.4
01 al 15 May	558.8	516.2		1075.0
16 - 31 Mayo	973.9	680.5		1654.4
01 - 15 Jun	731.6	480.4		1212.0
16 - 30 Jun	672.4	472.8		1145.2
01-Jul	41.5	64.2		105.7
02-Jul	55.0	101.7		156.6
03-Jul	64.8	51.5		116.3
04-Jul	93.2	35.6		128.7
05-Jul	82.3	35.6		117.9
06-Jul	62.2	36.7		98.9
07-Jul	13.6	35.8		49.4
08-Jul	28.8	20.8		49.6
09-Jul	45.4	35.7		81.1
10-Jul	49.1	65.5		114.6
11-Jul	71.0	51.0		122.0
12-Jul	33.9	25.1		59.0
13-Jul	23.4	0.0		23.4
<b>TOTAL</b>	<b>6450.9</b>	<b>5437.0</b>	<b>0.0</b>	<b>11887.9</b>
%	54.3	45.7		100.0



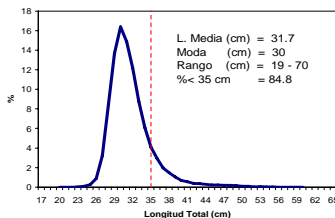
NUMERO DE EMBARCACIONES

DIA	EAC	EAME
01-Jul	4	2
02-Jul	6	3
03-Jul	8	3
04-Jul	9	2
05-Jul	8	1
06-Jul	8	1
07-Jul	4	2
08-Jul	3	1
09-Jul	6	2
10-Jul	7	3
11-Jul	8	3
12-Jul	4	1
13-Jul	3	

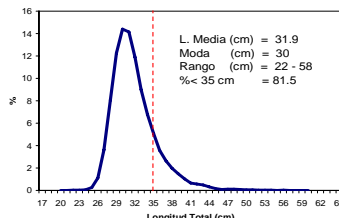
DIA	EAC				EAME			
	RANGO	MODA	L.MEDIA	% < DE 35 cm	RANGO	MODA	L.MEDIA	% < DE 35 cm
01-Jul	23 - 57	30	32.0	78.1	24 - 51	31	32.6	73.8
02-Jul	24 - 58	31	32.2	79.5	25 - 49	29	31.4	86.7
03-Jul	23 - 58	30	31.8	82.2	25 - 56	29	30.8	87.8
04-Jul	23 - 57	30	31.3	86.6	25 - 58	30	32.4	76.4
05-Jul	23 - 53	30	31.5	85.3	22 - 46	33	33.6	64.0
06-Jul	19 - 59	30	32.0	81.4	23 - 47	32	31.9	80.9
07-Jul	21 - 61	30	31.2	86.3	23 - 49	31	32.2	80.1
08-Jul	24 - 54	31	32.1	81.2	24 - 47	30	31.9	81.5
09-Jul	23 - 55	30	32.0	83.3	24 - 50	31	32.2	83.4
10-Jul	24 - 53	30	31.3	76.5	24 - 56	30	31.9	81.5
11-Jul	24 - 55	30	31.9	84.4	25 - 49	30	31.5	89.5
12-Jul	22 - 70	30	31.1	92.9	25 - 53	31	32.4	79.7
13-Jul	25 - 54	30	31.2	89.6				

ESTRUCTURA POR TAMAÑOS DE MERLUZA  
01 - 13 DE JULIO DEL 2008

SUBAREA A



SUBAREA B



SUBAREA C

