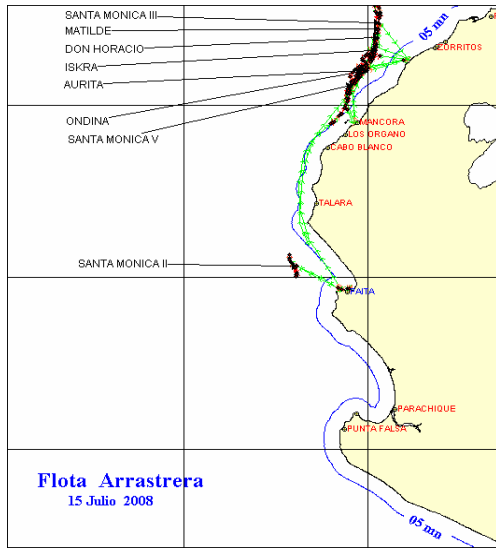




15 DE JULIO 2008

ZONAS DE PESCA DE MERLUZA

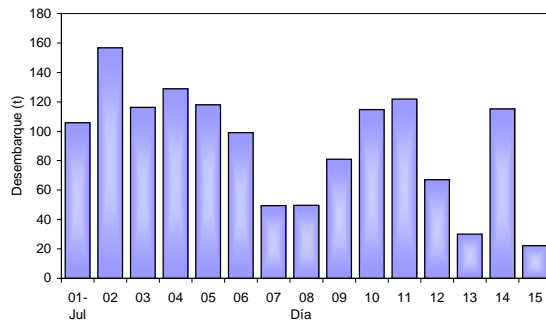


DESEMBARQUE (t) DE RECURSOS DEMERSALES DE LA FLOTA INDUSTRIAL

| DIA | MERLUZA | OTROS DEMERSALES | TOTAL |
|---------------|----------------|------------------|----------------|
| 01 al 15 Ene | 1004.5 | 38.3 | 1042.8 |
| 16 al 31 Ene | 1362.6 | 45.9 | 1408.4 |
| 01 al 15 Feb | 1163.7 | 43.1 | 1206.8 |
| 16 al 23 Feb | 815.7 | 29.5 | 845.2 |
| 01 al 30 Mar | 0.0 | 0.0 | 0.0 |
| 01 al 15 Abr | 0.0 | 0.0 | 0.0 |
| 16 al 30 Abr | 1231.4 | 68.5 | 1299.9 |
| 01 al 15 May | 1075.0 | 61.3 | 1136.3 |
| 16 - 31 Mayo | 1654.4 | 87.2 | 1741.6 |
| 01 - 15 Junio | 1212.0 | 55.2 | 1267.2 |
| 16 - 30 Jun | 1145.2 | 55.6 | 1200.9 |
| 01-Jul | 105.7 | 5.0 | 110.7 |
| 02-Jul | 156.6 | 6.2 | 162.9 |
| 03-Jul | 116.3 | 5.9 | 122.2 |
| 04-Jul | 128.7 | 13.2 | 141.9 |
| 05-Jul | 117.9 | 4.6 | 122.5 |
| 06-Jul | 98.9 | 3.5 | 102.4 |
| 07-Jul | 49.4 | 2.9 | 52.3 |
| 08-Jul | 49.6 | 1.4 | 51.1 |
| 09-Jul | 81.1 | 4.3 | 85.4 |
| 10-Jul | 114.6 | 6.4 | 121.0 |
| 11-Jul | 122.0 | 5.0 | 126.9 |
| 12-Jul | 67.0 | 3.1 | 70.0 |
| 13-Jul | 29.9 | 2.5 | 32.4 |
| 14-Jul | 115.0 | 8.7 | 123.7 |
| 15-Jul | 22.3 | 1.4 | 23.6 |
| TOTAL | 12039.6 | 558.5 | 12598.1 |
| % | 95.6 | 4.4 | 100.0 |

DESEMBARQUE (t) DE MERLUZA POR TIPO DE FLOTA

| DIA | INDUSTRIAL | | | TOTAL |
|--------------|---------------|---------------|------------|----------------|
| | EAC | EAME | EME | |
| 01 al 15 Ene | 565.7 | 438.8 | | 1004.5 |
| 16 al 31 Ene | 526.3 | 826.3 | | 1362.6 |
| 01 al 15 Feb | 528.8 | 634.9 | | 1163.7 |
| 16 al 23 Feb | 519.3 | 296.4 | | 815.7 |
| 01 al 30 Mar | 0.0 | 0.0 | | 0.0 |
| 01 al 15 Abr | 0.0 | 0.0 | | 0.0 |
| 16 al 30 Abr | 699.8 | 531.5 | | 1231.4 |
| 01 al 15 May | 558.8 | 516.2 | | 1075.0 |
| 16 - 31 Mayo | 973.9 | 680.5 | | 1654.4 |
| 01 - 15 Jun | 731.6 | 480.4 | | 1212.0 |
| 16 - 30 Jun | 672.4 | 472.8 | | 1145.2 |
| 01-Jul | 41.5 | 64.2 | | 105.7 |
| 02-Jul | 55.0 | 101.7 | | 156.6 |
| 03-Jul | 64.8 | 51.5 | | 116.3 |
| 04-Jul | 93.2 | 35.6 | | 128.7 |
| 05-Jul | 82.3 | 35.6 | | 117.9 |
| 06-Jul | 62.2 | 36.7 | | 98.9 |
| 07-Jul | 13.6 | 35.8 | | 49.4 |
| 08-Jul | 28.8 | 20.8 | | 49.6 |
| 09-Jul | 45.4 | 35.7 | | 81.1 |
| 10-Jul | 49.1 | 65.5 | | 114.6 |
| 11-Jul | 71.0 | 51.0 | | 122.0 |
| 12-Jul | 41.9 | 25.1 | | 67.0 |
| 13-Jul | 29.9 | 0.0 | | 29.9 |
| 14-Jul | 52.5 | 62.5 | | 115.0 |
| 15-Jul | 14.1 | 8.2 | | 22.3 |
| TOTAL | 6532.0 | 5507.7 | 0.0 | 12039.6 |
| % | 54.3 | 45.7 | | 100.0 |

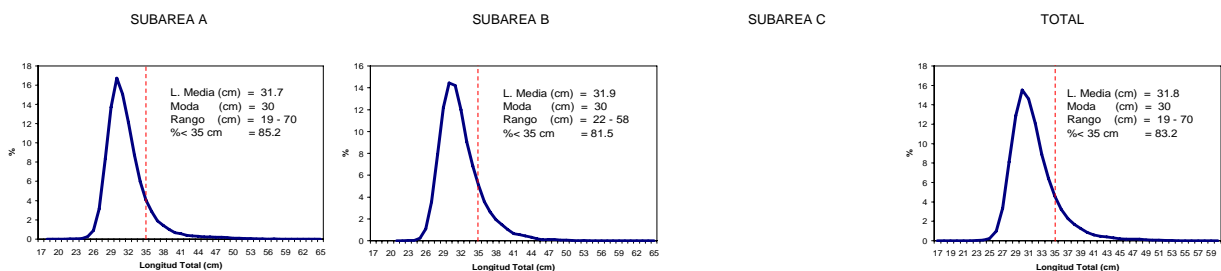


NUMERO DE EMBARCACIONES

| DIA | EAC | EAME |
|--------|-----|------|
| 01-Jul | 4 | 2 |
| 02-Jul | 6 | 3 |
| 03-Jul | 8 | 3 |
| 04-Jul | 9 | 2 |
| 05-Jul | 8 | 1 |
| 06-Jul | 8 | 1 |
| 07-Jul | 4 | 2 |
| 08-Jul | 3 | 1 |
| 09-Jul | 6 | 2 |
| 10-Jul | 7 | 3 |
| 11-Jul | 8 | 3 |
| 12-Jul | 5 | 1 |
| 13-Jul | 5 | |
| 14-Jul | 6 | 4 |
| 15-Jul | 3 | 1 |

| DIA | EAC | | | | EAME | | | |
|--------|---------|------|---------|--------------|---------|------|---------|--------------|
| | RANGO | MODA | L.MEDIA | % < DE 35 cm | RANGO | MODA | L.MEDIA | % < DE 35 cm |
| 01-Jul | 23 - 57 | 30 | 32.0 | 78.1 | 24 - 51 | 31 | 32.6 | 73.8 |
| 02-Jul | 24 - 58 | 31 | 32.2 | 79.5 | 25 - 49 | 29 | 31.4 | 86.7 |
| 03-Jul | 23 - 58 | 30 | 31.8 | 82.2 | 25 - 56 | 29 | 30.8 | 87.8 |
| 04-Jul | 23 - 57 | 30 | 31.3 | 86.6 | 25 - 58 | 30 | 32.4 | 76.4 |
| 05-Jul | 23 - 53 | 30 | 31.5 | 85.3 | 22 - 46 | 33 | 33.6 | 64.0 |
| 06-Jul | 19 - 59 | 30 | 32.0 | 81.4 | 23 - 47 | 32 | 31.9 | 80.9 |
| 07-Jul | 21 - 61 | 30 | 31.2 | 86.3 | 23 - 49 | 31 | 32.2 | 80.1 |
| 08-Jul | 24 - 51 | 31 | 32.1 | 81.2 | 24 - 47 | 30 | 31.9 | 81.5 |
| 09-Jul | 23 - 55 | 30 | 32.0 | 83.3 | 24 - 50 | 31 | 32.2 | 83.4 |
| 10-Jul | 24 - 53 | 30 | 31.3 | 76.5 | 24 - 56 | 30 | 31.9 | 81.5 |
| 11-Jul | 24 - 55 | 30 | 31.9 | 84.4 | 25 - 49 | 30 | 31.5 | 89.5 |
| 12-Jul | 22 - 70 | 31 | 31.3 | 92.4 | 25 - 53 | 31 | 32.4 | 79.7 |
| 13-Jul | 24 - 58 | 30 | 31.2 | 89.3 | | | | |
| 14-Jul | 26 - 65 | 30 | 31.0 | 90.2 | 25 - 53 | 31 | 32.4 | 81.2 |
| 15-Jul | 23 - 56 | 30 | 30.8 | 92.3 | 25 - 53 | 30 | 32.1 | 83.2 |

ESTRUCTURA POR TAMAÑOS DE MERLUZA
01 - 15 DE JULIO DEL 2008



* Cifras preliminares, no oficiales