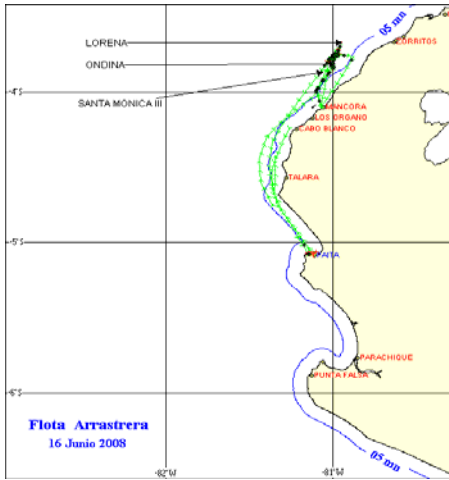




16 DE JUNIO 2008

ZONAS DE PESCA DE MERLUZA

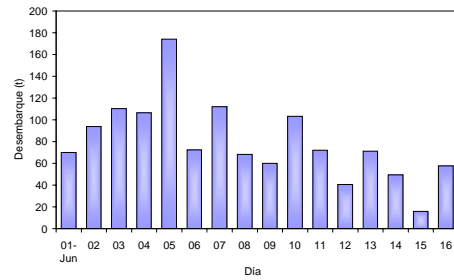


DESEMBARQUE (t) DE RECURSOS DEMERSALES DE LA FLOTA INDUSTRIAL

DIA	MERLUZA	OTROS DEMERSALES	TOTAL
01 al 15 Ene	1004.5	38.3	1042.8
16 al 31 Ene	1362.6	45.9	1408.4
01 al 15 Feb	1163.7	43.1	1206.8
16 al 23 Feb	815.7	29.5	845.2
01 al 30 Mar	0.0	0.0	0.0
01 al 15 Abr	0.0	0.0	0.0
16 al 30 Abr	1231.4	68.5	1299.9
01 al 15 May	1075.0	61.3	1136.3
16 - 31 Mayo	1654.4	87.2	1741.6
01-Jun	69.9	3.2	73.2
02-Jun	93.7	3.5	97.2
03-Jun	110.4	5.1	115.5
04-Jun	106.5	4.9	111.4
05-Jun	174.1	5.1	179.2
06-Jun	72.5	3.2	75.7
07-Jun	112.0	4.7	116.8
08-Jun	68.3	2.3	70.6
09-Jun	60.1	1.9	61.9
10-Jun	103.1	5.6	108.7
11-Jun	72.0	2.6	74.6
12-Jun	40.5	2.7	43.3
13-Jun	71.2	5.0	76.2
14-Jun	49.4	3.7	53.1
15-Jun	15.9	1.5	17.4
16-Jun	57.6	2.3	60.0
TOTAL	9584.5	431.2	10015.7
%	95.7	4.3	100.0

DESEMBARQUE (t) DE MERLUZA POR TIPO DE FLOTA

DIA	INDUSTRIAL			TOTAL
	EAC	EAME	EME	
01 al 15 Ene	565.7	438.8		1004.5
16 al 31 Ene	536.3	826.3		1362.6
01 al 15 Feb	528.8	634.9		1163.7
16 al 23 Feb	519.3	296.4		815.7
01 al 30 Mar	0.0	0.0		0.0
01 al 15 Abr	0.0	0.0		0.0
16 al 30 Abr	699.8	531.5		1231.4
01 al 15 May	558.8	516.2		1075.0
16 - 31 Mayo	973.9	680.5		1654.4
01-Jun	34.7	35.2		69.9
02-Jun	93.7	0.0		93.7
03-Jun	72.4	38.0		110.4
04-Jun	70.2	36.3		106.5
05-Jun	88.5	85.5		174.1
06-Jun	43.1	29.4		72.5
07-Jun	72.1	40.0		112.0
08-Jun	26.2	42.1		68.3
09-Jun	28.8	31.2		60.1
10-Jun	82.1	21.0		103.1
11-Jun	36.0	36.0		72.0
12-Jun	16.9	23.6		40.5
13-Jun	43.1	28.1		71.2
14-Jun	15.5	33.9		49.4
15-Jun	15.9	0.0		15.9
16-Jun	25.0	32.6		57.6
TOTAL	5146.9	4437.6	0.0	9584.5
%	53.7	46.3		100.0



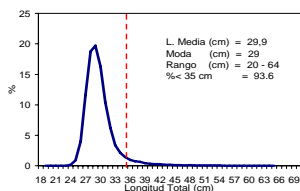
NUMERO DE EMBARCACIONES

DIA	EAC	EAME
01-Jun	3	1
02-Jun	7	
03-Jun	7	1
04-Jun	7	1
05-Jun	7	2
06-Jun	6	1
07-Jun	8	1
08-Jun	5	1
09-Jun	4	1
10-Jun	8	1
11-Jun	5	1
12-Jun	4	1
13-Jun	6	1
14-Jun	2	1
15-Jun	3	
16-Jun	1	1

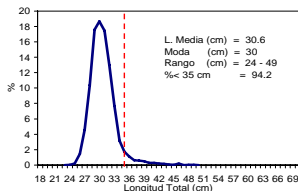
DIA	EAC				EAME			
	RANGO	MODA	L.MEDIA	% < DE 35 cm	RANGO	MODA	L.MEDIA	% < DE 35 cm
01-Jun	23 - 42	28	28.8	98.5	23 - 50	28	28.8	98.1
02-Jun	24 - 50	28	29.1	97.1				
03-Jun	23 - 53	28	29.0	97.6	23 - 51	28	29.2	96.5
04-Jun	24 - 55	29	29.7	93.8	21 - 54	28	29.5	96.3
05-Jun	24 - 50	30	30.5	94.9	24 - 52	30	30.5	91.6
06-Jun	22 - 49	29	29.9	94.9	25 - 49	30	30.6	93.1
07-Jun	23 - 58	29	30.4	88.9	24 - 52	29	29.6	94.3
08-Jun	24 - 52	29	29.6	93.6	24 - 45	29	29.7	94.7
09-Jun	24 - 53	29	30.5	92.9	25 - 51	28	28.8	97.0
10-Jun	23 - 56	29	30.6	89.0	23 - 53	29	30.9	31.8
11-Jun	24 - 54	28	29.7	56.9	25 - 64	28	32.9	25.8
12-Jun	23 - 54	29	29.9	22.4	24 - 56	29	30.6	40.2
13-Jun	23 - 53	29	30.0	64.6	25 - 62	34	37.5	7.6
14-Jun	24 - 50	28	28.6	24.5	25 - 61	30	30.1	56.6
15-Jun	21 - 48	29	29.4	27.5				
16-Jun	24 - 47	30	29.9	44.4	25 - 53	31	30.4	49.2

ESTRUCTURA POR TAMAÑOS DE MERLUZA
 01 - 16 DE JUNIO DEL 2008

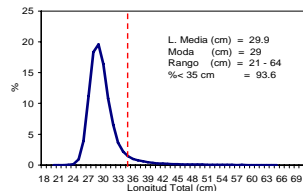
SUBAREA A



SUBAREA B



SUBAREA C



TOTAL