



30 DE JUNIO DEL 2010

ZONAS DE PESCA DE MERLUZA

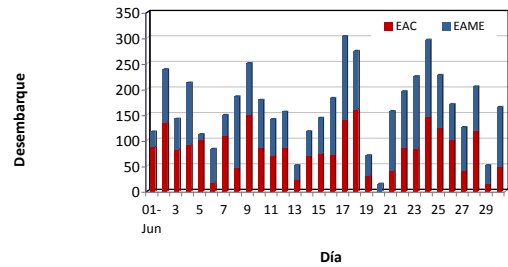


DESEMBARQUE (t) DE MERLUZA POR TIPO DE FLOTA

DIA	INDUSTRIAL			TOTAL
	EAC	EAME	EME	
01 - 31 Ene	2149.8	1379.0		3528.8
01 - 28 Feb	1984.2	1358.7		3342.9
01 - 31 Mar	1062.9	1109.7		2172.6
01 - 31 May	1655.8	1683.2		3339.0
01 - 15 Jun	1224.5	1055.1		2279.7
16 - Jun	71.4	111.0		182.4
17 - Jun	140.1	163.0		303.1
18 - Jun	160.4	114.1		274.5
19 - Jun	30.5	39.9		70.3
20 - Jun		14.9		14.9
21 - Jun	39.7	117.3		157.0
22 - Jun	85.7	109.9		195.6
23 - Jun	84.0	140.8		224.8
24 - Jun	146.9	149.2		296.2
25 - Jun	124.0	103.7		227.7
26 - Jun	101.3	69.6		170.9
27 - Jun	41.3	84.2		125.5
28 - Jun	118.9	86.0		204.9
29 - Jun	14.2	37.1		51.3
30 - Jun	48.8	116.1		164.9
TOTAL	9284.4	8042.6	0.0	17327.0
%	53.6	46.4	0.0	100.0

DESEMBARQUE (t) DE RECURSOS DEMERSALES DE LA FLOTA INDUSTRIAL

DIA	MERLUZA	OTROS DEMERSALES	TOTAL
01 - 31 Ene	3528.8	189.4	3718.3
01 - 28 Feb	3342.9	168.6	3511.6
01 - 31 Mar	2172.6	86.5	2259.1
01 - 31 May	3339.0	198.7	3537.7
01 - 15 Jun	2279.7	127.4	2407.0
16 - Jun	182.4	20.3	202.7
17 - Jun	303.1	9.2	312.3
18 - Jun	274.5	6.4	280.9
19 - Jun	70.3	1.2	71.6
20 - Jun	14.9	0.9	15.8
21 - Jun	157.0	6.5	163.5
22 - Jun	195.6	7.9	203.5
23 - Jun	224.8	10.7	235.5
24 - Jun	296.2	12.5	308.6
25 - Jun	227.7	9.5	237.2
26 - Jun	170.9	7.5	178.5
27 - Jun	125.5	7.6	133.1
28 - Jun	204.9	8.9	213.8
29 - Jun	51.3	1.7	53.0
30 - Jun	164.9	5.8	170.8
TOTAL	17327	887	18214
%	95.1	4.9	100.0



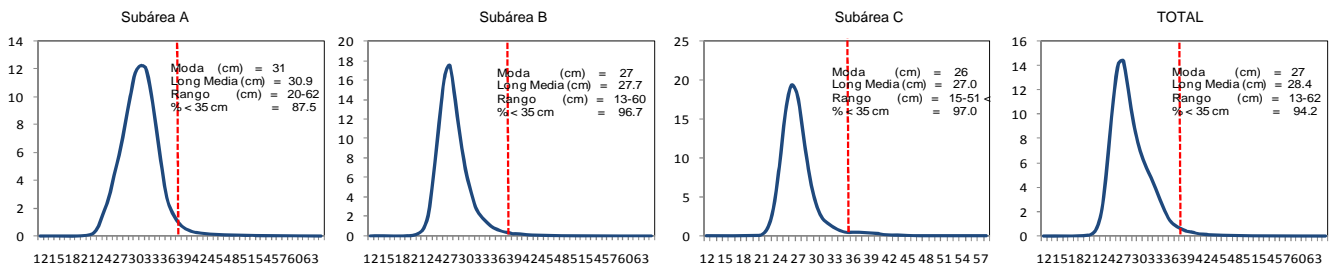
Desembarque diario (t) de merluza por tipo de flota

NÚMERO DE EMBARCACIONES

DIA	EAC	EAME
15 - Jun	6	2
16 - Jun	6	4
17 - Jun	9	4
18 - Jun	10	3
19 - Jun	2	1
20 - Jun		1
21 - Jun	3	3
22 - Jun	7	3
23 - Jun	7	4
24 - Jun	8	4
25 - Jun	6	3
26 - Jun	8	2
27 - Jun	4	2
28 - Jun	9	2
29 - Jun	1	1
30 - Jun	4	2

DIA	EAC				EAME			
	RANGO	MODA	L.MEDIA	% < DE 35 cm	RANGO	MODA	L.MEDIA	% < DE 35 cm
15 - Jun	21 - 53	32	32.0	79.9	21 - 54	27	29.0	91.4
16 - Jun	21 - 59	31	31.2	82.9	20 - 61	27	27.8	95.7
17 - Jun	21 - 50	27	27.8	95.6	21 - 45	26	27.0	97.2
18 - Jun	21 - 44	26	26.7	98.0	21 - 46	26	27.0	96.7
19 - Jun	20 - 45	26	26.7	96.8	21 - 40	25	26.2	98.4
20 - Jun					20 - 49	27	27.5	95.5
21 - Jun	21 - 48	27	28.6	88.9	16 - 45	26	26.8	96.9
22 - Jun	20 - 56	26	27.9	94.6	19 - 46	26	27.5	96.2
23 - Jun	20 - 60	27	28.4	96.2	15 - 51	27	28.4	92.6
24 - Jun	20 - 56	27	27.9	96.4	15 - 52	26	28.1	93.9
25 - Jun	22 - 46	27	27.4	97.2	18 - 49	27	28.0	96.3
26 - Jun	21 - 52	31 y 28	30.9	83.7	21 - 44	26	27.9	95.5
27 - Jun	22 - 60	27 y 32	29.6	87.3	21 - 45	27	28.2	97.4
28 - Jun	20 - 60	26	29.1	91.3	21 - 46	27	28.3	95.8
29 - Jun	22 - 41	27	27.4	99.4	21 - 44	27	26.9	97.2
30 - Jun	20 - 44	27	27.4	98.6	20 - 50	27	27.1	98.6

ESTRUCTURA POR TAMAÑOS DE MERLUZA POR SUBÁREAS
01 AL 30 DE JUNIO 2010



* Cifras preliminares, no oficiales