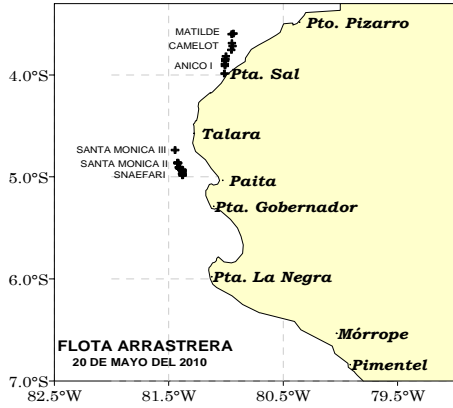




20 DE MAYO DEL 2010

ZONAS DE PESCA DE MERLUZA

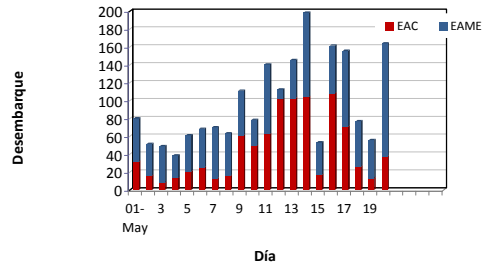


DESEMBARQUE (t) DE RECURSOS DEMERSALES DE LA FLOTA INDUSTRIAL

DIA	MERLUZA	OTROS DEMERSALES	TOTAL
01 - 31 Ene	3528.8	189.4	3718.3
01 - 28 Feb	3342.9	168.6	3511.6
01 - 31 Mar	2172.6	86.5	2259.1
01 - 15 May	1323.5	84.1	1407.6
16 - May	161.5	5.8	167.3
17 - May	155.7	10.7	166.3
18 - May	77.0	4.4	81.3
19 - May	55.9	2.7	58.6
20 - May	164.0	6.8	170.8
<b>TOTAL</b>	<b>10982</b>	<b>559</b>	<b>11541</b>
%	95.2	4.8	100.0

DESEMBARQUE (t) DE MERLUZA POR TIPO DE FLOTA

DIA	INDUSTRIAL			TOTAL
	EAC	EAME	EME	
01 - 31 Ene	2149.8	1379.0		3528.8
01 - 28 Feb	1984.2	1358.7		3342.9
01 - 31 Mar	1062.9	1109.7		2172.6
01 - 15 May	641.6	681.9		1323.5
16 - May	108.2	53.3		161.5
17 - May	71.0	84.6		155.7
18 - May	26.1	50.8		77.0
19 - May	13.4	42.5		55.9
20 - May	37.5	126.5		164.0
<b>TOTAL</b>	<b>6094.7</b>	<b>4887.2</b>	<b>0.0</b>	<b>10981.9</b>
%	55.5	44.5	0.0	100.0



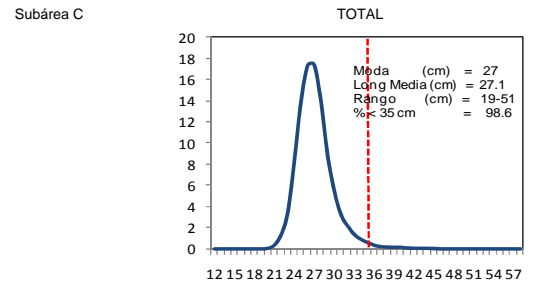
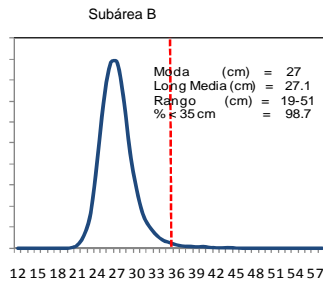
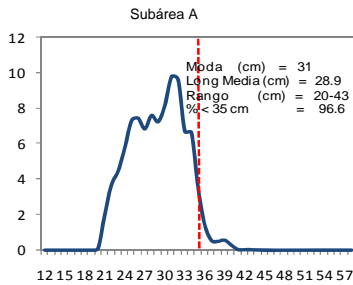
Desembarque diario (t) de merluza por tipo de flota

NÚMERO DE EMBARCACIONES

DIA	EAC	EAME
15 - May	2	1
16 - May	9	2
17 - May	10	3
18 - May	7	2
19 - May	3	2
20 - May	2	4

DIA	EAC				EAME			
	RANGO	MODA	L.MEDIA	% < DE 35 cm	RANGO	MODA	L.MEDIA	% < DE 35 cm
15 - May	20 - 45	26	26.8	98.6	22 - 47	26	27.2	97.5
16 - May	20 - 46	26	26.5	99.3	20 - 45	26	26.9	98.4
17 - May	19 - 41	27	27.5	98.6	21 - 44	27	27.3	98.2
18 - May	20 - 39	27	27.2	98.7	20 - 49	26	26.9	97.7
19 - May	20 - 43	27	26.8	99.0	21 - 46	27	27.7	96.7
20 - May	20 - 39	26	27.8	96.3	20 - 43	27	27.8	96.9

ESTRUCTURA POR TAMAÑOS DE MERLUZA POR SUBAREAS  
01 AL 20 DE MAYO 2010



\* Cifras preliminares, no oficiales