

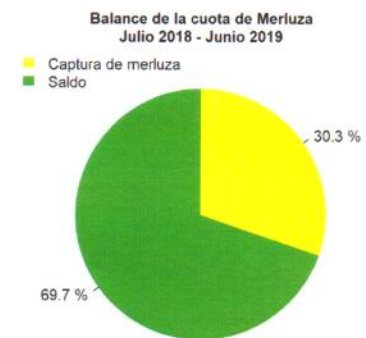
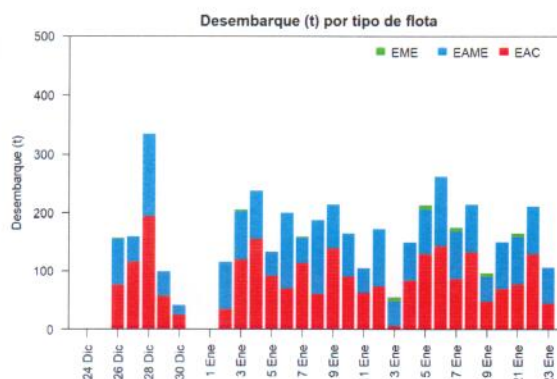
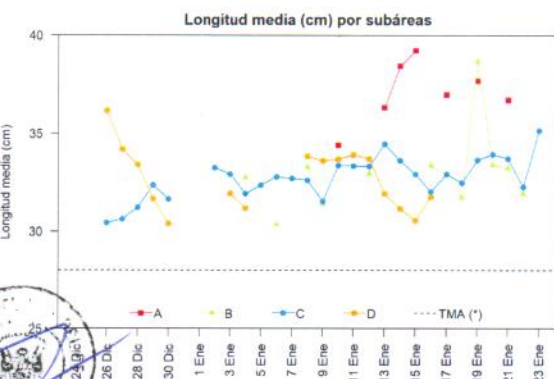
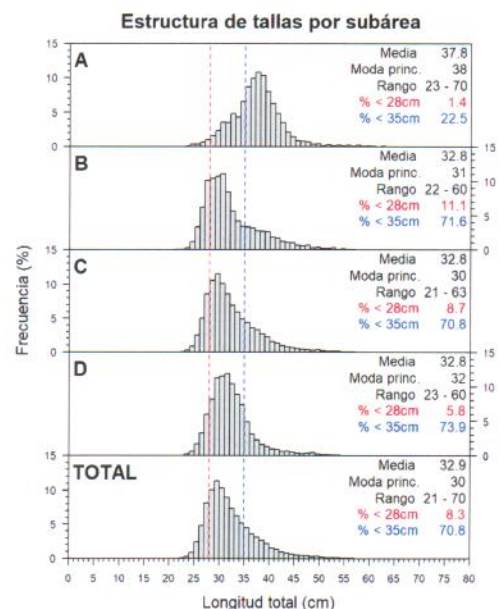
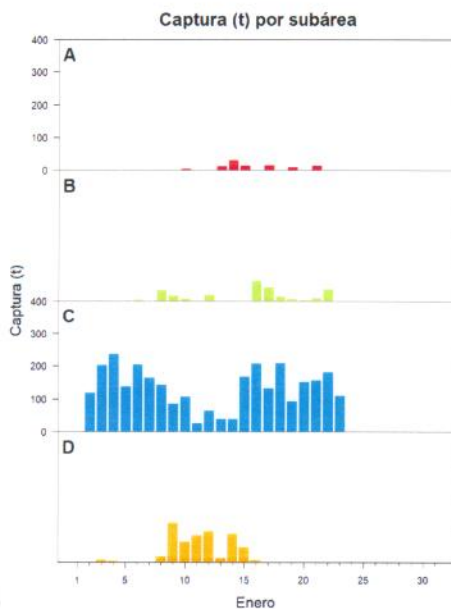
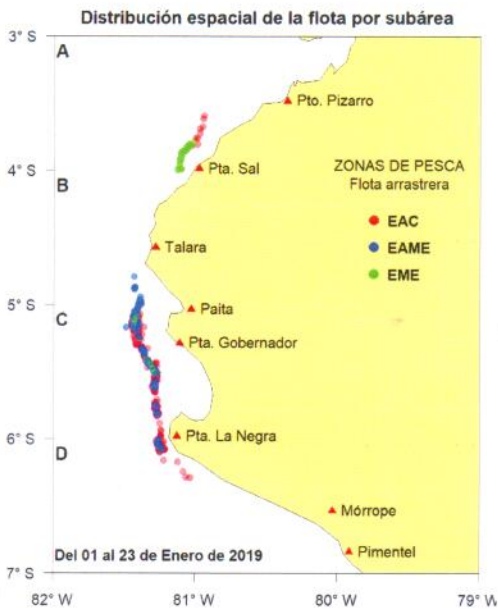


**Reporte 1. Pesquería de Merluza**

Al 23 de enero de 2019

Desembarque (t) de recursos demersales de la flota arrastrera

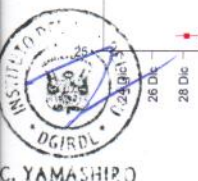
	INDUSTRIAL			TOTAL	OTROS	TOTAL	Número embarcaciones		
	EAC	EAME	EME	merluza	demersales		EAC	EAME	EME
Jul. 2018	1403.3	1512.9	12.6	2928.8	231.0	3159.8			
Ago. 2018	1297.9	1662.8	12.8	2973.5	214.1	3187.6			
Set. 2018	181.1	122.2	2.3	305.6	155.2	460.8			
Oct. 2018	1574.1	1476.4	6.6	3057.1	277.7	3334.8			
Nov. 2018	831.1	1036.0	8.7	1875.8	716.0	2591.8			
Dic. 2018	1921.6	1545.7	51.9	3519.2	650.7	4169.9			
01-18 Ene	1584.3	1342.5	26.6	2953.4	87.4	3040.8			
19 Ene	47.3	42.8	5.5	95.6	8.8	104.4	3	1	1
20 Ene	68.2	81.5		149.7	2.0	151.7	8	2	
21 Ene	76.8	81.3	6.2	164.3	9.6	173.9	7	2	1
22 Ene	129.6	81.0		210.6	3.7	214.3	8	2	
23 Ene	43.8	61.7		105.5	1.1	106.6	3	1	
<b>TOTAL</b>	<b>9159.1</b>	<b>9046.8</b>	<b>133.2</b>	<b>18339.1</b>	<b>2357.3</b>	<b>20696.4</b>	<b>29</b>	<b>8</b>	<b>2</b>



Estadísticas descriptivas de la estructura de tallas por subárea al 23 de enero de 2019

	A				B				C				D			
	Rango	Moda	Media	%<28cm	Rango	Moda	Media	%<28cm	Rango	Moda	Media	%<28cm	Rango	Moda	Media	%<28cm
17-Ene	23 - 58	38	36.9	2.5	24 - 55	28	32.9	14.5	23 - 54	29	32.9	11				
18-Ene					24 - 55	30	31.7	13.6	22 - 59	29	32.5	9.5				
19-Ene	26 - 52	38	37.7	0.8	30 - 54	39	38.6	0	24 - 57	30	33.7	5.8				
20-Ene					24 - 57	28	33.4	21.9	22 - 62	30	33.9	7.9				
21-Ene	23 - 54	39	36.7	2.2	25 - 54	30	33.2	6.6	23 - 63	30	33.7	6.5				
22-Ene					23 - 60	29	31.9	15.6	23 - 56	30	32.3	9.6				
23-Ene									24 - 56	34	35.1	4.2				

Cifras preliminares.  
(\* Talla Mínima Autorizada)



C. YAMASHIRO



V. BLASKOVIĆ



V. YÉPEZ (e)