



02 DE AGOSTO DE 2009

ZONAS DE PESCA DE MERLUZA

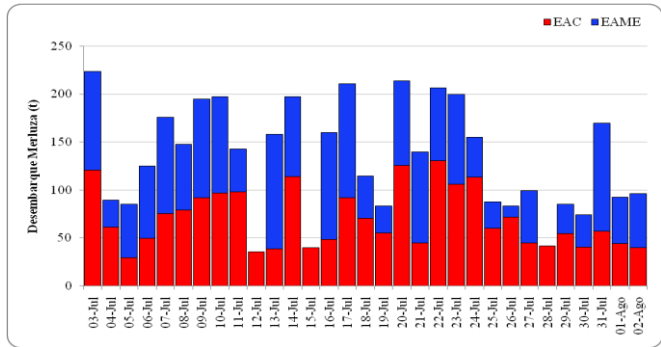


DESEMBARQUE (t) DE RECURSOS DEMERSALES DE LA FLOTA INDUSTRIAL

DIA	MERLUZA	OTROS DEMERSALES	TOTAL
01 - 15 Ene	787.10	57.77	844.87
16 - 31 Ene	1861.92	110.04	1971.96
01 - 15 Feb	2587.99	111.15	2699.14
01 - 20 Mar	33.15	2.54	35.69
21 - 31 Mar	1230.86	68.72	1299.57
01 - 15 Abr	1836.79	83.37	1920.15
16 - 30 Abr	2656.18	132.39	2788.57
01 - 15 May	2861.69	122.51	2984.19
16 - 31 May	2749.27	105.33	2854.60
01 - 15 Jun	2881.70	98.40	2980.10
16 - 30 Jun	2633.53	106.36	2739.88
1 - 15 Jul	2194.20	107.45	2301.65
16 - 31 Jul	2125.37	75.20	2200.57
1 - Ago	92.54	6.06	98.61
2 - Ago	96.39	5.52	101.91
TOTAL	26628.66	1192.81	27821.47
%	95.7	4.3	100.0

DESEMBARQUE (t) DE MERLUZA POR TIPO DE FLOTA

DIA	INDUSTRIAL			TOTAL
	EAC	EAME	EME	
01 - 15 Ene	490	297		787
16 - 31 Ene	1198	664		1862
01 - 15 Feb	1827	761		2588
01 - 20 Mar	33	0		33
21 - 31 Mar	871	359		1231
01 - 15 Abr	1036	801		1837
16 - 30 Abr	1586	1071		2656
01 - 15 May	1731	1131		2862
16 - 31 May	1506	1244		2749
01 - 15 Jun	1717	1165		2882
16 - 30 Jun	1681	953		2634
1 - 15 Jul	1130	1065		2194
16 - 31 Jul	1157	968		2125
1 - Ago	44	48		93
2 - Ago	40	57		96
TOTAL	16047	10582	0	26629
%	60.3	39.7	0.0	100.0



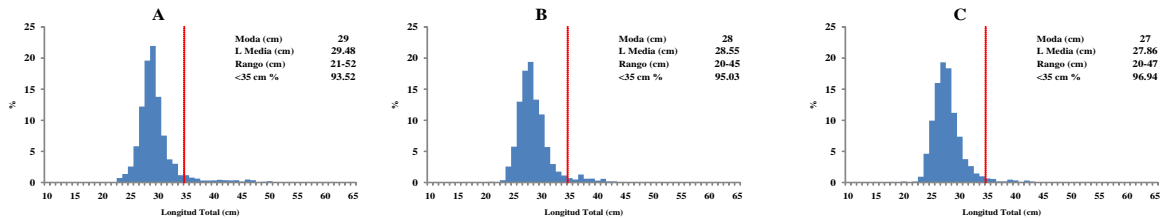
Desembarque diario (t) de merluza por tipo de flota

NUMERO DE EMBARCACIONES

DIA	EAC	EAME
1 - Jul	9	2
2 - Jul	14	4
3 - Jul	13	3
4 - Jul	10	1
5 - Jul	6	2
6 - Jul	8	3
7 - Jul	7	3
8 - Jul	7	3
9 - Jul	10	4
10 - Jul	8	4
11 - Jul	9	2
12 - Jul	8	
13 - Jul	4	4
14 - Jul	6	4
15 - Jul	4	
16 - Jul	4	4
17 - Jul	8	4
18 - Jul	5	2
19 - Jul	5	2
20 - Jul	9	3
21 - Jul	4	4
22 - Jul	8	3
23 - Jul	9	4
24 - Jul	9	4
25 - Jul	7	1
26 - Jul	8	1
27 - Jul	4	2
28 - Jul	4	
29 - Jul	5	1
30 - Jul	4	2
31 - Jul	7	4
1 - Ago	5	2
2 - Ago	7	2

DIA	EAC				EAME			
	RANGO	MODA	L.MEDIA	% < DE 35 cm	RANGO	MODA	L.MEDIA	% < DE 35 cm
01 - Jul	22-48	28	28.4	99.0	22-40	27	28.0	99.4
2 - Jul	17-51	27	28.1	97.6	16-49	26	27.2	98.2
3 - Jul	19-54	27	28.5	96.8	23-47	27	27.6	98.9
4 - Jul	19-48	27	27.8	98.9	16-48	27	26.9	99.9
5 - Jul	21-52	28	28.4	98.0	23-45	28	28.2	98.5
6 - Jul	15-47	27	28.1	98.8	20-47	27	28.0	97.0
7 - Jul	17-51	27	27.8	98.5	22-47	27	27.8	97.8
8 - Jul	18-46	27	27.6	99.6	23-48	27	28.2	97.6
9 - Jul	20-50	27	27.8	99.1	21-49	27	27.8	98.6
10 - Jul	20-48	27	28.1	98.3	21-47	27	28.0	98.6
11 - Jul	18-48	27	28.2	98.3	22-49	27	28.3	98.0
12 - Jul	21-45	27	28.1	98.1				
13 - Jul	22-51	28	29.4	97.4	20-46	27	27.7	99.0
14 - Jul	20-50	28	28.7	98.1	20-46	28	28.0	98.8
15 - Jul	22-54	29	29.7	97.6				
16 - Jul	21-44	28	28.3	99.4	20-45	27	28.9	98.9
17 - Jul	18-54	29	28.6	98.8	20-47	27	28.4	99.3
18 - Jul	22-47	29	28.7	97.8	20-41	27	28.4	99.3
19 - Jul	22-53	28	28.9	96.2	15-49	27	27.6	98.8
20 - Jul	22-52	29	29.3	98.0	21-44	27	28.9	98.9
21 - Jul	22-55	28	29.0	98.4	20-43	27	29.0	99.1
22 - Jul	19-48	29	29.5	97.7	18-42	27	28.2	99.4
23 - Jul	17-53	29	28.9	99.0	18-45	29	30.1	95.3
24 - Jul	19-55	29	29.8	98.6	15-47	19	25.9	98.1
25 - Jul	21-48	29	29.0	98.3	23-52	29	31.9	90.2
26 - Jul	21-54	30	30.2	97.9	22-34	27	28.5	100.0
27 - Jul	22-50	29	29.6	99.4	24-41	27	29.6	99.5
28 - Jul	24-54	29	29.6	99.3				
29 - Jul	23-54	30	30.1	99.2	21-38	28	32.6	100.0
30 - Jul	23-53	30	29.7	99.6	16-43	29	33.0	98.7
31 - Jul	22-49	29	29.4	99.9	22-48	29	32.6	98.4
1 - Ago	20-50	29	29.8	98.4	21-42	28	32.5	98.4
2 - Ago	20-47	28	28.4	99.7	23-52	28	32.7	97.2

ESTRUCTURA POR TAMAÑOS DE MERLUZA POR SUBAREAS 01 al 02 DE AGOSTO DE 2009



* Cifras preliminares, no oficiales