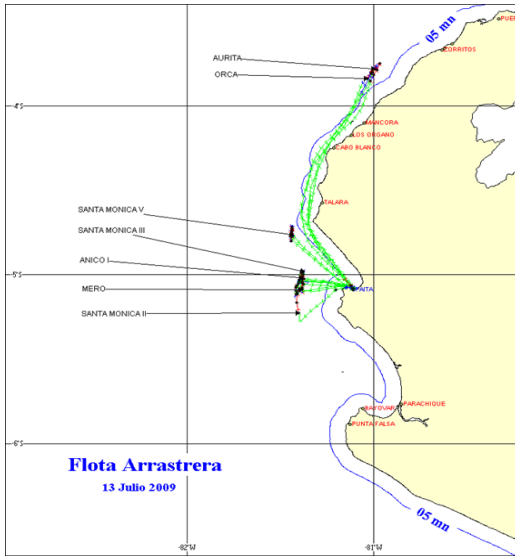




13 DE JULIO DE 2009

ZONAS DE PESCA DE MERLUZA

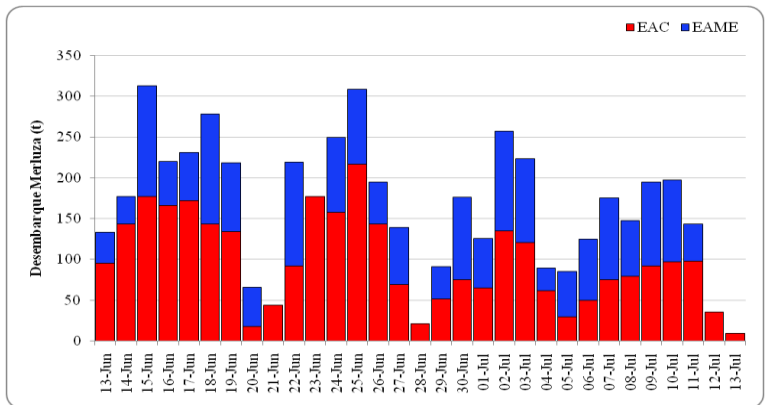


DESEMBARQUE (t) DE RECURSOS DEMERSALES DE LA FLOTA INDUSTRIAL

DIA	MERLUZA	OTROS DEMERSALES	TOTAL
01 - 15 Ene	787.10	57.77	844.87
16 - 31 Ene	1861.92	110.04	1971.96
01 - 15 Feb	2587.99	111.15	2699.14
01 - 20 Mar	33.15	2.54	35.69
21 - 31 Mar	1230.86	68.72	1299.57
01 - 15 Abr	1836.79	83.37	1920.15
16 - 30 Abr	2656.18	132.39	2788.57
01 - 15 May	2861.69	122.51	2984.19
16 - 31 May	2749.27	105.33	2854.60
01 - 15 Jun	2881.70	98.40	2980.10
16 - 30 Jun	2633.53	106.36	2739.88
1 - Jul	125.46	5.58	131.04
2 - Jul	256.84	10.04	266.88
3 - Jul	223.66	9.47	233.13
4 - Jul	89.31	6.63	95.95
5 - Jul	85.33	5.98	91.31
6 - Jul	124.82	7.18	132.00
7 - Jul	175.67	8.36	184.03
8 - Jul	147.92	7.24	155.16
9 - Jul	194.99	19.29	214.28
10 - Jul	197.21	7.59	204.80
11 - Jul	143.06	5.92	148.98
12 - Jul	35.28	3.33	38.61
13 - Jul	9.46	0.66	10.12
TOTAL	23929.16	1095.85	25025.02
%	95.6	4.4	100.0

DESEMBARQUE (t) DE MERLUZA POR TIPO DE FLOTA

DIA	INDUSTRIAL			TOTAL
	EAC	EAME	EME	
01 - 15 Ene	490	297		787
16 - 31 Ene	1198	664		1862
01 - 15 Feb	1827	761		2588
01 - 20 Mar	33	0		33
21 - 31 Mar	871	359		1231
01 - 15 Abr	1036	801		1837
16 - 30 Abr	1586	1071		2656
01 - 15 May	1731	1131		2862
16 - 31 May	1506	1244		2749
01 - 15 Jun	1717	1165		2882
16 - 30 Jun	1681	953		2634
1 - Jul	65	61		125
2 - Jul	135	122		257
3 - Jul	121	103		224
4 - Jul	61	28		89
5 - Jul	29	56		85
6 - Jul	49	75		125
7 - Jul	75	100		176
8 - Jul	79	69		148
9 - Jul	92	103		195
10 - Jul	97	101		197
11 - Jul	98	45		143
12 - Jul	35			35
13 - Jul	9			9
TOTAL	14623	9306	0	23929
%	61.1	38.9	0.0	100.0



NUMERO DE EMBARCACIONES

DIA	EAC	EAME
1 - Jul	9	2
2 - Jul	14	4
3 - Jul	13	3
4 - Jul	10	1
5 - Jul	6	2
6 - Jul	8	3
7 - Jul	7	3
8 - Jul	7	3
9 - Jul	10	4
10 - Jul	8	4
11 - Jul	9	2
12 - Jul	8	
13 - Jul	1	

DIA	EAC				EAME			
	RANGO	MODA	L.MEDIA	% < DE 35 cm	RANGO	MODA	L.MEDIA	% < DE 35 cm
01 - Jul	22-48	28	28.4	99.0	22-40	27	28.0	99.4
2 - Jul	17-51	27	28.1	97.6	16-49	26	27.2	98.2
3 - Jul	19-54	27	28.5	96.8	23-47	27	27.6	98.9
4 - Jul	19-48	27	27.8	98.9	16-48	27	26.9	99.9
5 - Jul	21-52	28	28.4	98.0	23-45	28	28.2	98.5
6 - Jul	15-47	27	28.1	98.8	20-47	27	28.0	97.0
7 - Jul	17-51	27	27.8	98.5	22-47	27	27.8	97.8
8 - Jul	18-46	27	27.6	99.6	23-48	27	28.2	97.6
9 - Jul	20-50	27	27.8	99.1	21-49	27	27.8	98.6
10 - Jul	20-48	27	28.1	98.3	21-47	27	28.0	98.6
11 - Jul	18-48	27	28.2	98.3	22-49	27	28.3	98.0
12 - Jul	21-45	27	28.1	98.1				
13 - Jul	23-51	30	30.0	95.6				

ESTRUCTURA POR TAMAÑOS DE MERLUZA POR SUBAREAS
01 al 13 DE JULIO DE 2009

