



22 DE JULIO DE 2009

ZONAS DE PESCA DE MERLUZA

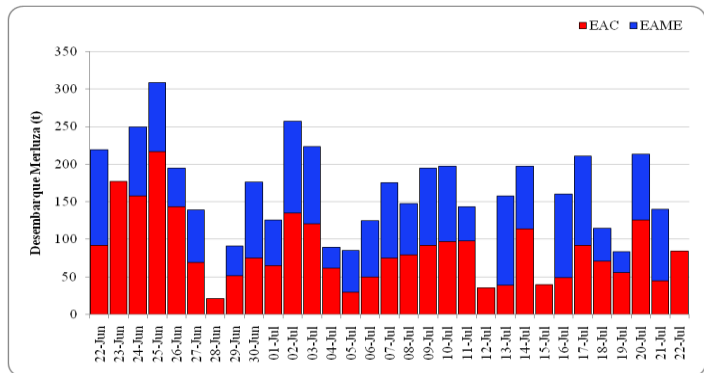


DESEMBARQUE (t) DE RECURSOS DEMERSALES DE LA FLOTA INDUSTRIAL

DIA	MERLUZA	OTROS DEMERSALES	TOTAL
01 - 15 Ene	787.10	57.77	844.87
16 - 31 Ene	1861.92	110.04	1971.96
01 - 15 Feb	2587.99	111.15	2699.14
01 - 20 Mar	33.15	2.54	35.69
21 - 31 Mar	1230.86	68.72	1299.57
01 - 15 Abr	1836.79	83.37	1920.15
16 - 30 Abr	2656.18	132.39	2788.57
01 - 15 May	2861.69	122.51	2984.19
16 - 31 May	2749.27	105.33	2854.60
01 - 15 Jun	2881.70	98.40	2980.10
16 - 30 Jun	2633.53	106.36	2739.88
1 - 15 Jul	2194.20	107.45	2301.65
16 - Jul	160.23	3.97	164.20
17 - Jul	210.71	5.21	215.92
18 - Jul	114.80	3.22	118.02
19 - Jul	83.47	5.18	88.64
20 - Jul	213.73	7.17	220.89
21 - Jul	139.67	5.10	144.77
22 - Jul	84.17	2.88	87.05
<b>TOTAL</b>	<b>25321.13</b>	<b>1138.75</b>	<b>26459.88</b>
%	95.7	4.3	100.0

DESEMBARQUE (t) DE MERLUZA POR TIPO DE FLOTA

DIA	INDUSTRIAL			TOTAL
	EAC	EAME	EME	
01 - 15 Ene	490	297		787
16 - 31 Ene	1198	664		1862
01 - 15 Feb	1827	761		2588
01 - 20 Mar	33	0		33
21 - 31 Mar	871	359		1231
01 - 15 Abr	1036	801		1837
16 - 30 Abr	1586	1071		2656
01 - 15 May	1731	1131		2862
16 - 31 May	1506	1244		2749
01 - 15 Jun	1717	1165		2882
16 - 30 Jun	1681	953		2634
1 - 15 Jul	1130	1065		2194
16 - Jul	49	112		160
17 - Jul	92	119		211
18 - Jul	71	44		115
19 - Jul	55	28		83
20 - Jul	126	88		214
21 - Jul	45	95		140
22 - Jul	84			84
<b>TOTAL</b>	<b>15327</b>	<b>9994</b>	<b>0</b>	<b>25321</b>
%	60.5	39.5	0.0	100.0



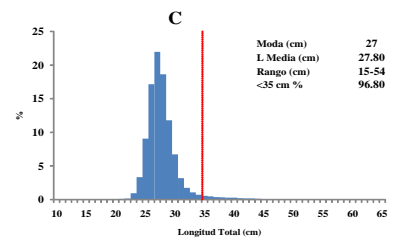
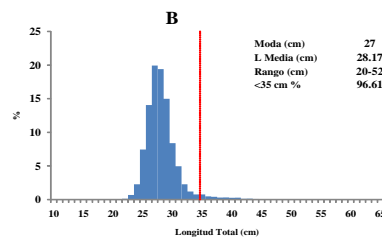
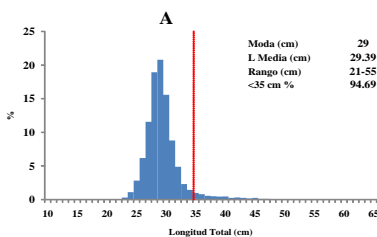
Desembarque diario (t) de merluza por tipo de flota

NUMERO DE EMBARCACIONES

DIA	EAC	EAME
1 - Jul	9	2
2 - Jul	14	4
3 - Jul	13	3
4 - Jul	10	1
5 - Jul	6	2
6 - Jul	8	3
7 - Jul	7	3
8 - Jul	7	3
9 - Jul	10	4
10 - Jul	8	4
11 - Jul	9	2
12 - Jul	8	
13 - Jul	4	4
14 - Jul	6	4
15 - Jul	4	
16 - Jul	4	4
17 - Jul	8	4
18 - Jul	5	2
19 - Jul	5	2
20 - Jul	9	3
21 - Jul	4	4
22 - Jul	5	

DIA	EAC				EAME			
	RANGO	MODA	L.MEDIA	% < DE 35 cm	RANGO	MODA	L.MEDIA	% < DE 35 cm
01 - Jul	22-48	28	28.4	99.0	22-40	27	28.0	99.4
2 - Jul	17-51	27	28.1	97.6	16-49	26	27.2	98.2
3 - Jul	19-54	27	28.5	96.8	23-47	27	27.6	98.9
4 - Jul	19-48	27	27.8	98.9	16-48	27	26.9	99.9
5 - Jul	21-52	28	28.4	98.0	23-45	28	28.2	98.5
6 - Jul	15-47	27	28.1	98.8	20-47	27	28.0	97.0
7 - Jul	17-51	27	27.8	98.5	22-47	27	27.8	97.8
8 - Jul	18-46	27	27.6	99.6	23-48	27	28.2	97.6
9 - Jul	20-50	27	27.8	99.1	21-49	27	27.8	98.6
10 - Jul	20-48	27	28.1	98.3	21-47	27	28.0	98.6
11 - Jul	18-48	27	28.2	98.3	22-49	27	28.3	98.0
12 - Jul	21-45	27	28.1	98.1				
13 - Jul	22-51	28	29.4	97.4	20-46	27	27.7	99.0
14 - Jul	20-50	28	28.7	98.1	20-46	28	28.0	98.8
15 - Jul	22-54	29	29.7	97.6				
16 - Jul	21-44	28	28.3	99.4	20-45	27	28.9	98.9
17 - Jul	18-54	29	28.6	98.8	20-47	27	28.4	99.3
18 - Jul	22-47	29	28.7	97.8	20-41	27	28.4	99.3
19 - Jul	22-53	28	28.9	96.2	15-49	27	27.6	98.8
20 - Jul	22-52	29	29.3	98.0	21-44	27	28.9	98.9
21 - Jul	22-55	28	29.0	98.4	20-43	27	29.0	99.1
22 - Jul	22-48	29	29.6	97.3				

ESTRUCTURA POR TAMAÑOS DE MERLUZA POR SUBAREAS  
 01 al 22 DE JULIO DE 2009



\* Cifras preliminares, no oficiales