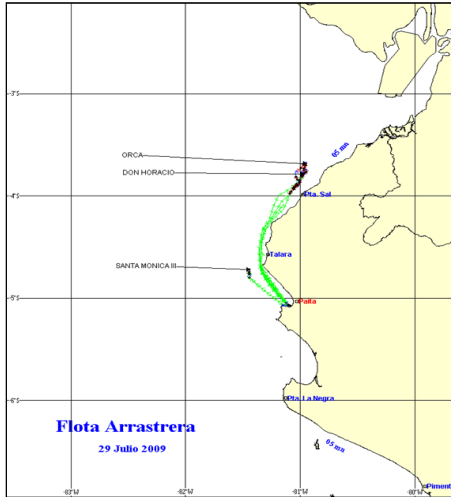




29 DE JULIO DE 2009

ZONAS DE PESCA DE MERLUZA

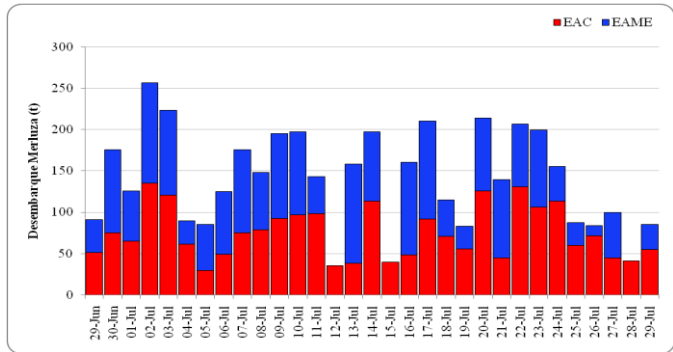


DESEMBARQUE (t) DE MERLUZA POR TIPO DE FLOTA

DIA	INDUSTRIAL			TOTAL
	EAC	EAME	EME	
01 - 15 Ene	490	297		787
16 - 31 Ene	1198	664		1862
01 - 15 Feb	1827	761		2588
01 - 20 Mar	33	0		33
21 - 31 Mar	871	359		1231
01 - 15 Abr	1036	801		1837
16 - 30 Abr	1586	1071		2656
01 - 15 May	1731	1131		2862
16 - 31 May	1506	1244		2749
01 - 15 Jun	1717	1165		2882
16 - 30 Jun	1681	953		2634
1 - 15 Jul	1130	1065		2194
16 - Jul	49	112		160
17 - Jul	92	119		211
18 - Jul	71	44		115
19 - Jul	55	28		83
20 - Jul	126	88		214
21 - Jul	45	95		140
22 - Jul	131	76		207
23 - Jul	106	94		200
24 - Jul	113	42		155
25 - Jul	60	27		88
26 - Jul	71	12		84
27 - Jul	45	55		99
28 - Jul	42			42
29 - Jul	55	30		85
TOTAL	15865	10330	0	26196
%	60.6	39.4	0.0	100.0

DESEMBARQUE (t) DE RECURSOS DEMERSALES DE LA FLOTA INDUSTRIAL

DIA	MERLUZA	OTROS DEMERSALES	TOTAL
01 - 15 Ene	787.10	57.77	844.87
16 - 31 Ene	1861.92	110.04	1971.96
01 - 15 Feb	2587.99	111.15	2699.14
01 - 20 Mar	33.15	2.54	35.69
21 - 31 Mar	1230.86	68.72	1299.57
01 - 15 Abr	1836.79	83.37	1920.15
16 - 30 Abr	2656.18	132.39	2788.57
01 - 15 May	2861.69	122.51	2984.19
16 - 31 May	2749.27	105.33	2854.60
01 - 15 Jun	2881.70	98.40	2980.10
16 - 30 Jun	2633.53	108.36	2739.88
1 - 15 Jul	2194.20	107.45	2301.65
16 - Jul	160.23	3.97	164.20
17 - Jul	210.71	5.21	215.92
18 - Jul	114.80	3.22	118.02
19 - Jul	83.47	5.18	88.64
20 - Jul	213.73	7.17	220.89
21 - Jul	139.67	5.10	144.77
22 - Jul	206.78	6.49	213.26
23 - Jul	199.57	4.77	204.34
24 - Jul	155.33	8.07	163.40
25 - Jul	87.50	3.10	90.60
26 - Jul	83.56	3.78	87.34
27 - Jul	99.40	3.11	102.51
28 - Jul	41.52	2.33	43.85
29 - Jul	85.08	2.82	87.90
TOTAL	26195.69	1170.33	27366.02
%	95.7	4.3	100.0



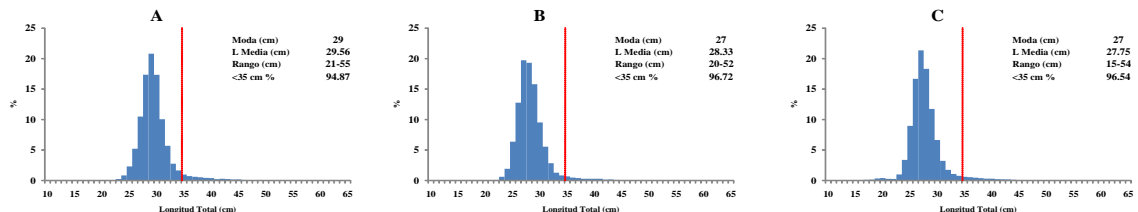
Desembarque diario (t) de merluza por tipo de flota

NUMERO DE EMBARCACIONES

DIA	EAC	EAME
1 - Jul	9	2
2 - Jul	14	4
3 - Jul	13	3
4 - Jul	10	1
5 - Jul	6	2
6 - Jul	8	3
7 - Jul	7	3
8 - Jul	7	3
9 - Jul	10	4
10 - Jul	8	4
11 - Jul	9	2
12 - Jul	8	
13 - Jul	4	4
14 - Jul	6	4
15 - Jul	4	
16 - Jul	4	4
17 - Jul	8	4
18 - Jul	5	2
19 - Jul	5	2
20 - Jul	9	3
21 - Jul	4	4
22 - Jul	8	3
23 - Jul	9	4
24 - Jul	9	4
25 - Jul	7	1
26 - Jul	8	1
27 - Jul	4	2
28 - Jul	4	
29 - Jul	5	1

DIA	EAC				EAME			
	RANGO	MODA	L.MEDIA	% < DE 35 cm	RANGO	MODA	L.MEDIA	% < DE 35 cm
01 - Jul	22-48	28	28.4	99.0	22-40	27	28.0	98.8
2 - Jul	17-51	27	28.1	97.6	16-49	26	29.2	98.1
3 - Jul	19-54	27	28.5	96.8	23-47	27	29.6	98.7
4 - Jul	19-48	27	27.8	98.9	16-48	27	28.9	99.8
5 - Jul	21-52	28	28.4	98.0	23-45	28	30.2	98.0
6 - Jul	15-47	27	28.1	98.8	20-47	27	30.0	96.4
7 - Jul	17-51	27	27.8	98.5	22-47	27	29.8	97.3
8 - Jul	18-46	27	27.6	99.6	23-48	27	30.2	97.2
9 - Jul	20-50	27	27.8	99.1	21-49	27	29.7	98.4
10 - Jul	20-48	27	28.1	98.3	21-47	27	30.0	98.1
11 - Jul	18-48	27	28.2	98.3	22-49	27	30.3	97.5
12 - Jul	21-45	27	28.1	98.1				
13 - Jul	22-51	28	29.4	97.4	20-46	27	29.7	98.9
14 - Jul	20-50	28	28.7	98.1	20-46	28	30.0	98.6
15 - Jul	22-54	29	29.7	97.6				
16 - Jul	21-44	28	28.3	99.4	20-45	27	29.9	98.9
17 - Jul	18-54	29	28.6	98.8	20-47	27	29.4	99.3
18 - Jul	22-47	29	28.7	97.8	20-41	27	29.4	99.3
19 - Jul	22-53	28	28.9	96.2	15-49	27	28.6	98.8
20 - Jul	22-52	29	29.3	98.0	21-44	27	29.9	98.9
21 - Jul	22-55	28	29.0	98.4	20-43	27	30.0	99.1
22 - Jul	19-48	29	29.5	97.7	18-42	27	29.2	99.4
23 - Jul	17-53	29	28.9	99.0	18-45	29	31.1	95.3
24 - Jul	19-55	29	29.8	98.6	15-47	19 - 28	26.9	98.1
25 - Jul	21-48	29	29.0	98.3	23-52	29	32.4	90.2
26 - Jul	21-54	30	30.2	94.6	22-34	27	29.5	100.0
27 - Jul	22-50	29	29.6	98.3	24-41	27	30.6	99.5
28 - Jul	24-54	29	29.6	98.8				
29 - Jul	23-54	30	30.1	97.5	21-38	28	30.6	99.6

ESTRUCTURA POR TAMAÑOS DE MERLUZA POR SUBAREAS
 01 al 29 DE JULIO DE 2009



* Cifras preliminares, no oficiales