



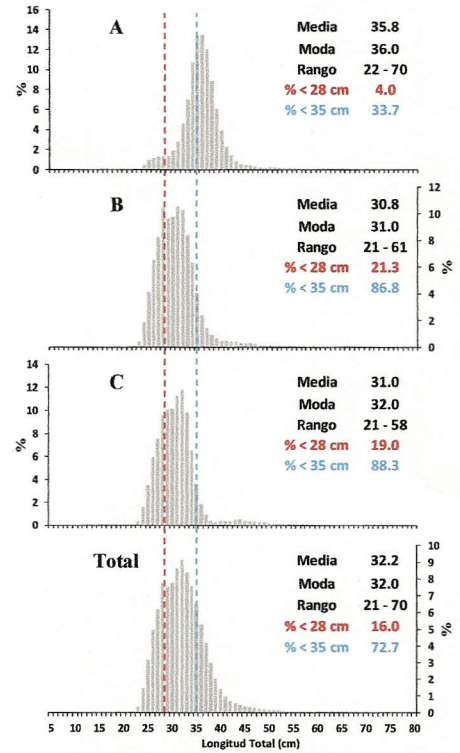
**Reporte 1. Pesquería de Merluza**

16 de septiembre de 2013

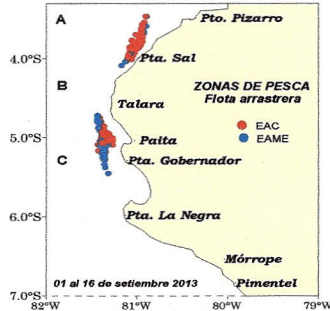
**Desembarque (t) de Recursos Demersales de la Flota Arrastrera Industrial\***

DIA	INDUSTRIAL		TOTAL MERLUZ	Otros demersales	TOTAL	Número embarcaciones	
	EAC	EAME				EAC	EAME
Jul 13	1488.7	1972.7	3461.3	165.4	3626.8		
01 - 15 Ago	1257.9	1170.0	2427.9	57.2	2485.1		
16 - 31 Ago	1626.2	1296.3	2922.6	69.6	2992.1		
01 - Set	55.3	69.0	124.2	3.1	127.3	4	2
02 - Set	116.0	121.9	237.8	6.1	243.9	9	3
03 - Set	104.0	69.4	173.5	3.5	177.0	7	2
04 - Set	201.0	117.4	318.4	12.5	330.9	13	3
05 - Set	107.3	65.6	173.0	4.7	177.6	7	3
06 - Set	184.7	60.0	244.8	23.3	268.0	12	2
07 - Set	47.6	76.5	124.1	3.2	127.3	3	2
08 - Set	108.9	55.9	164.8	5.1	169.9	6	2
09 - Set	120.9	66.2	187.1	4.4	191.6	8	2
10 - Set	106.9	115.0	221.9	4.5	226.3	7	3
11 - Set	84.8	104.1	188.9	4.6	193.4	5	3
12 - Set	161.1	65.8	226.9	5.8	232.8	9	2
13 - Set	82.6	117.9	200.6	15.3	215.8	6	3
14 - Set	51.1	67.1	118.2	2.1	120.3	3	2
15 - Set	121.3	34.3	155.6	5.5	161.1	6	1
16 - Set	62.2		62.2	2.2	64.3	4	
<b>Total</b>	<b>6088.5</b>	<b>5645.2</b>	<b>11733.6</b>	<b>397.8</b>	<b>12131.5</b>		

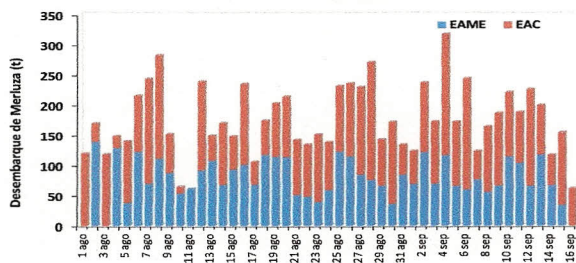
**Estructura de Tallas por Subáreas del 01 al 16 septiembre**



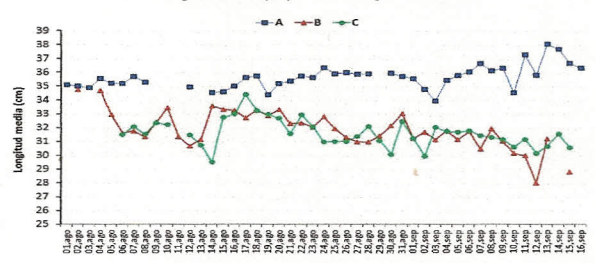
**Distribución Espacial de la Flota**



**Desembarque de Merluza (t) por tipo de Flota**



**Longitud media (cm) de Merluza por subáreas**



**Estadísticas descriptivas de la estructura de tallas de Merluza por subárea del 01 al 16 septiembre**

DIA	A				B				C			
	RANGO	MODA	L.MEDIA	% < 28 cm	RANGO	MODA	L.MEDIA	% < 28 cm	RANGO	MODA	L.MEDIA	% < 28 cm
01 - Set	23 - 53	36	35.6	2.6	21 - 55	31	31.2	15.2	22 - 53	32	31.2	19.3
02 - Set	22 - 64	35	34.8	6.8	23 - 58	32	31.7	15.2	23 - 51	33	29.9	27.6
03 - Set	24 - 49	35	33.9	10.6	22 - 55	32	31.1	16.7	22 - 50	33	32.0	12.6
04 - Set	22 - 64	35	35.4	2.5	21 - 54	32	31.8	14.6	22 - 58	30	31.7	12.6
05 - Set	23 - 58	35	35.8	1.3	23 - 59	31	31.1	16.3	23 - 55	32	31.7	14.5
06 - Set	24 - 66	35	36.0	1.2	23 - 59	29	31.7	16.8	22 - 54	32	31.8	13.7
07 - Set	23 - 58	36	36.7	2.8	23 - 52	31	30.5	27.0	25 - 49	31	31.4	8.1
08 - Set	24 - 62	36	36.1	2.0	23 - 56	31	31.9	12.5	23 - 55	32	31.3	9.9
09 - Set	24 - 66	36	36.3	2.7	22 - 54	29	31.0	18.0	23 - 54	31	31.2	12.1
10 - Set	23 - 60	37	34.5	14.9	22 - 50	28	30.2	20.9	23 - 52	31	30.6	14.0
11 - Set	24 - 61	36	37.3	1.9	22 - 59	28	30.0	22.5	21 - 55	32	31.2	14.1
12 - Set	24 - 61	35	35.8	2.1	23 - 47	27	28.0	47.9	22 - 58	28	30.2	25.8
13 - Set	23 - 70	36	38.1	1.3	22 - 61	32	31.2	28.1	21 - 57	29	30.7	27.5
14 - Set	23 - 62	37	37.7	1.4					23 - 58	31	31.6	15.7
15 - Set	23 - 62	36	36.7	3.1	22 - 50	27	28.8	41.3	22 - 58	28	30.6	29.9
16 - Set	23 - 57	36	36.4	1.8								

\*Cifras preliminares, NO oficiales.

