



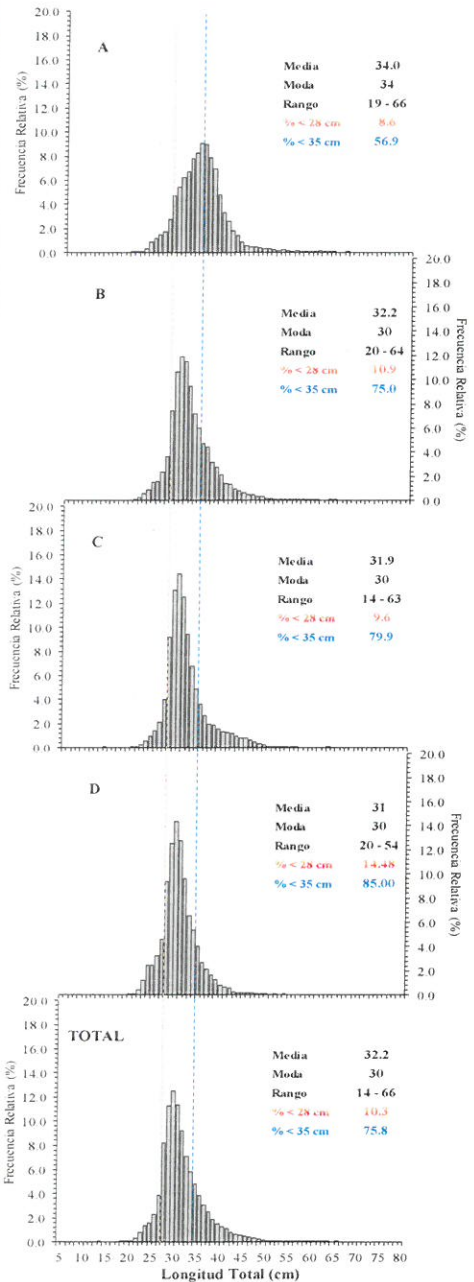
Reporte 1. Pesquería de Merluza

25 de Enero de 2018

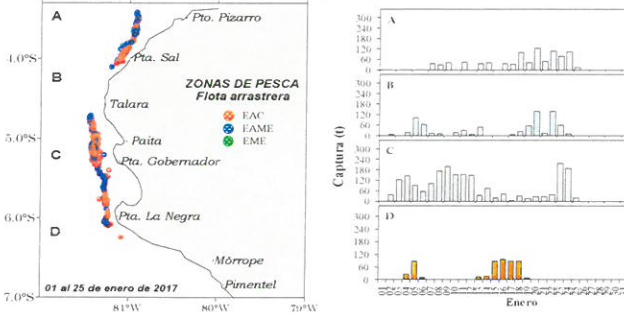
Desembarque (t) de Recursos Demersales de la Flota Arrastrera

DIA	INDUSTRIAL			TOTAL MERLUZA	Otros demersales	TOTAL	Número embarcaciones		
	EAC	EAME	EME				EAC	EAME	EME
Jul-17	1914.5	1556.7	8.7	3479.8	161.3	3641.2			
Ago-17	2621.7	2515.0	11.1	5147.8	178.1	5325.9			
Sep-17	149.2	0.0	0.0	149.2	33.4	182.6			
Oct-17	1927.9	1033.4	18.0	2979.3	165.4	3144.8			
Nov-17	2700.6	2133.3	1.3	4835.2	234.5	5069.7			
Dic-17	3640.5	1575.1	11.2	5226.8	198.1	5424.9			
02-15-Ene	1289.1	992.8	0.0	2281.9	67.0	2348.9			
16-Ene	93.1	80.4		173.5	3.6	177.1	8	2	
17-Ene	91.2	38.4		129.6	2.8	132.4	5	1	
18-Ene	120.2	118.0		238.2	5.7	244.0	8	3	
19-Ene	83.0	32.7		115.7	7.5	123.3	6	1	
20-Ene	152.8	131.1		283.9	7.2	291.2	10	2	
21-Ene	86.8			86.8	1.2	88.0	5		
22-Ene	173.3	107.6		280.9	21.4	302.3	9	3	
23-Ene	237.9	121.2		359.1	4.9	364.0	12	3	
24-Ene	179.0	124.9		303.9	6.1	310.0	12	3	
25-Ene	32.6			32.6	1.4	33.9	3		
Total	15493.2	10560.7	50.3	26104.2	1099.7	27203.9			

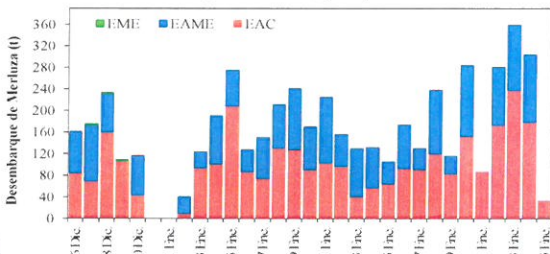
Estructura de Tallas por Subáreas del 01 al 25 Enero



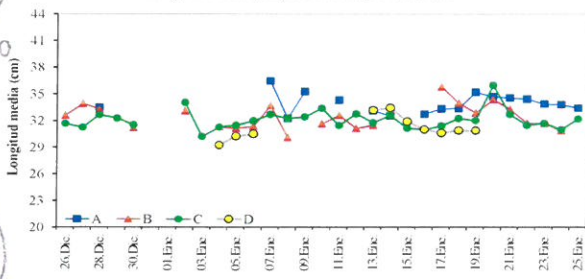
Distribución espacial de la flota y captura (t) por subárea del 01 al 25 Enero



Desembarque de Merluza (t) por tipo de Flota



Longitud media (cm) de Merluza por subáreas



Estadísticas descriptivas de la estructura de tallas de Merluza por subárea del 16 al 25 Enero

Día	A				B				C				D			
	Rango	Moda	Media	%<28 cm	Rango	Moda	Media	%<28 cm	Rango	Moda	Media	%<28 cm	Rango	Moda	Media	%<28 cm
16-Ene	23 - 52	32	32.7	16.0	22 - 56	34	35.8	1.8	21 - 47	31	31.0	17.4	20 - 47	30	31.0	14.8
17-Ene	20 - 62	32	33.3	13.9	22 - 56	34	35.8	1.8	21 - 48	33	31.4	10.7	21 - 49	30	30.6	15.7
18-Ene	21 - 63	34	33.4	11.6	23 - 57	32	34.0	4.1	23 - 52	30	32.3	10.8	20 - 50	30	30.9	15.5
19-Ene	24 - 61	36	35.2	2.6	21 - 56	31	32.9	8.1	20 - 46	30	32.0	14.4	23 - 45	31	30.9	15.9
20-Ene	22 - 63	35	34.7	3.2	20 - 63	34	34.4	7.1	22 - 52	33	36.0	6.3				
21-Ene	21 - 53	36	34.6	2.8	22 - 44	32	33.3	5.3	22 - 51	32	32.7	6.4				
22-Ene	19 - 63	35	34.4	3.9	20 - 60	29	31.7	14.7	21 - 53	29	31.5	11.0				
23-Ene	21 - 62	33	33.9	8.5	20 - 55	31	31.7	17.1	20 - 56	30	31.7	10.6				
24-Ene	21 - 66	34	33.8	11.1	22 - 45	31	30.9	13.0	20 - 54	30	31.0	15.1				
25-Ene	21 - 54	32	33.4	7.0					21 - 54	31	32.2	10.8				

Cifras preliminares.

R. GUEVARA

C. YAMASHIRO

V. BLASKOVIC